



# Encroachment into Safety Zone adjacent TVCB

WLD.030

## Description of Event

*A number of instances have occurred where encroachment has been identified.*

### Population at Risk

Construction and Maintenance Workers, Inspectors and Travelling Members of Public (MoP)

### Hazardous Activity and Residual Risk Description

- Vehicle driving close to barrier within working width.
- Trench box overhangs the working zone of the safety barrier. Operative was required to climb onto the box to fix a lifting shackle (which they rightly refused to do as it would have left them exposed to traffic).

### Potential consequences of this event

- Failure to comply could dramatically increase the severity of any injuries caused to drivers in the event of a traffic accident and also puts plant ops at unnecessary risk.
- VRS will not perform as expected in the event of a collision.
- Operation of plant close to the edge of the barrier as in the photo below can also cause drivers to swerve & overreact, increasing the chances of a road accident.
- Injuries to workers



Photo of Plant close to barrier

### Safety Hub Alert Database

- Filtering by text "Safety Zone/vicinity of temporary crash barrier (TCB)" in subject description has 1 safety alert.
- Sub-category 1 MoP vehicle, Lorry Loader cranes and x - Misc with sub-category 2 collision, competence and uncontrolled plant movements with a text filter for alerts containing "VRS" has 3 alerts.

### Potential Mitigation Measures

#### Design

- The decision for traffic flow during the works must be challenged and detailed geometry of the available space examined at options stage.
- Ensure that there is enough allocated space available in the design for construction vehicles to work on-site without getting close to the safety barriers.
- Designers to identify pinch points along the scheme and to identify them as hazards.



#### Construction

- Installation of temporary fencing obstructing the view of most drivers on the road would reduce the likelihood of vehicles being distracted or feeling the need to swerve to avoid the plants.

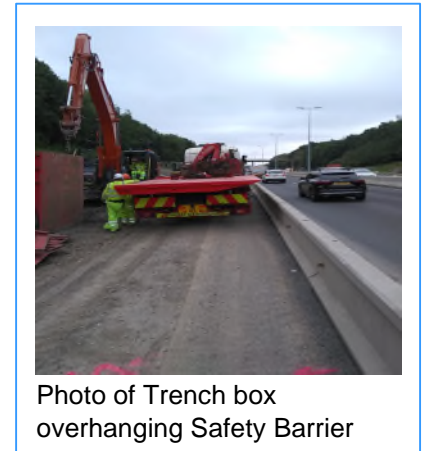


Photo of Trench box overhanging Safety Barrier

#### Maintenance / Operations

- Periodically assess safety and serviceability when traffic is less frequent.
- Ensure all workers are aware of the distance they need to keep from the safety barrier.

### Further Guidance and Reading

- [RtB 2 – Traffic Management](#)
- [RtB 26 – Safety by Design](#)
- [TSM Chapter 8 – Road works and temporary Situations](#)
- [WLD.013 Strategic Road Network Interaction – Live Carriageway Working](#) – Previous share



Please send ideas for Whole Life Design safety shares to [wellbeing@nationalhighways.co.uk](mailto:wellbeing@nationalhighways.co.uk)

LEAN

Alternative Plant

Improved end user benefits

Reduced Reportable Accidents