



Description of Event

During lifting operations, poor methods/equipment resulted in the roll bar dropping on the foot.

Population at Risk

Construction and Maintenance Workers

Hazardous Activity and Residual Risk Description

- Construction workers working with heavy roll bar and unstable roller lifting pin at a certain height exposes workers and MOP to the potential of being struck by the roll bars with an assessed residual risk of an almost certain likelihood of minor or moderate harm being incurred.

Potential consequences of this event

- HSE incident report recently reported the end of the roll bar dropped during the manual handling task and landed on the top of the worker's foot, causing minor bruising to the top of the foot.
- The roll bar might be landed on the other locations, resulting in a more serious injury.

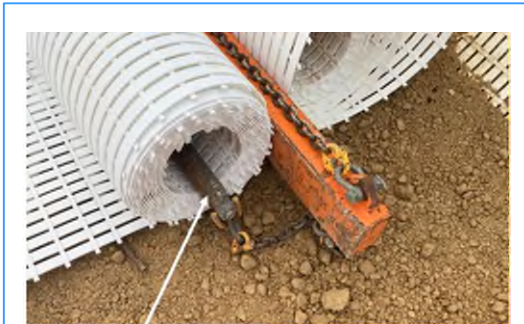
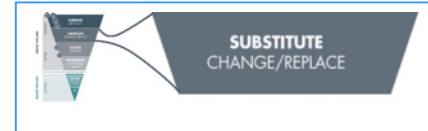


Photo of rollbar threaded through the membrane ground reinforcement roll.

Safety Hub Alert Database

- Sub-category 2 "Manual Handling" has 19 alerts including 16 with injury.

Potential Mitigation Measures



Design (Temporary Works)

- Safe system of work reviewed and updated to remove the manual handling risk. Introducing a slinging arrangement eliminates the need for a two-man lift of the bar into position.
- Consider other methods of lifting rolls of material to eliminate manual handling when being deployed.

Construction

- When purchasing materials, consider how the product will be unloaded and utilised on site.
- Review the designed access proposal for suitability of site conditions.
- RAMS updating to cover any new working method, ensuring everyone follows the instructions and guidelines.
- RAMS re-briefing the team to prevent any misunderstanding and adequate PPE is worn.
- Ensure as-built information included in the health and safety file includes information regarding location, loading capacity and materials.

Maintenance / Operations (Plant)

- Maintain the tools/equipment and instructions on how to use them in relation to the materials.

Further Guidance and Reading

- [Lifting Operations and Lifting Equipment Regulations 1998 \(LOLER\)](#)
- [DMRB GD 304](#) – Designing health and safety into maintenance.



Please send ideas for Whole Life Design safety shares to wellbeing@nationalhighways.co.uk

LEAN

Alternative Materials

Alternative Plant

Reduced Labour

Improved end user benefits

Reduced Activity Duration

Reduced Reportable Accidents