



Description of Event

During routine inspection of site, petrol cannister was stored in an unbonded container along with other COSHH deficiencies.

Population at Risk

Construction and Maintenance Workers and Inspectors

Hazardous Activity and Residual Risk Description

- The presence of potentially hazardous substances on site requires workers to ensure they are stored in line with COSHH regulations. Incorrect storage of substances on site has an assessed residual risk of 'an almost certain' likelihood of extreme harm incurred.

Potential consequences of this event

- Storing substances, such as petrol, outside of designated areas could cause contamination especially when stored in break room facilities.
- Flammable substances not contained correctly could cause fires/explosions which will cause delays to projects as well as the potential to cause severe injuries.
- Failure to comply with mandatory safety regulations.
- EA prosecution is between X and Y for contaminated land.

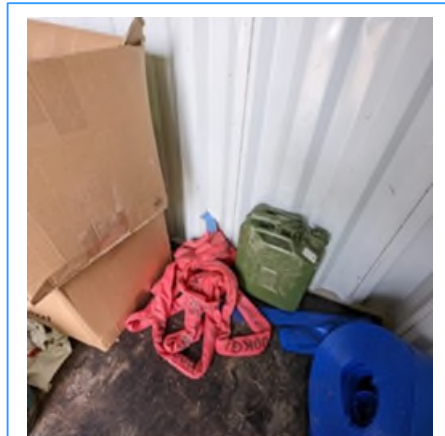


Photo of inappropriately stored fuel container

Safety Hub [Alert Database](#)

- Filtering by text "COSHH" in the Subject Description has 7 alerts including 3 with injury.

Potential Mitigation Measures

Design

- Ensure areas for the safe storage of potentially hazardous materials are considered during the design stages.
- Designer to ensure access to permanent storage areas considers areas for parking of plant.

Construction

- Refrain from storing materials outside of designated safe storage areas.
- Consider retaining safe storage areas where it is likely similar substances will be required on-site during the maintenance stages.
- Refer to construction phase plans for the management of COSHH materials.
- Include information regarding hazardous materials contained within assets in the asset tagging/health and safety file.

Maintenance / Operations

- Ensure materials are stored in compliance with COSHH regulations.
- Identify materials to be stored and any hazardous components.



Potentially hazardous substances piled up on live site.

Further Guidance and Reading

- [RtB 26](#) – Safety by Design
- [Control of Substances Hazardous to Health \(COSHH\)](#) – HSE Guidance
- [Materials storage and waste management](#) – HSE Guidance



Please send ideas for Whole Life Design safety shares to wellbeing@nationalhighways.co.uk

LEAN

Improved end user benefits

Reduced Defects

Reduced Reportable Accidents