



Description of Event

The formwork shutter was not installed in accordance with manufacturer's design

Population at Risk

Installation Contract Workers and Supervisors

Hazardous Activity and Residual Risk Description

- Installation of shutters may expose workers to structures that are unstable in the temporary condition.
- The residual risk of falling formwork has been assessed as moderate to serious.

Potential consequences of this event

- Collapse of formwork may result in impact and crush injuries to workers within area at risk of harm.

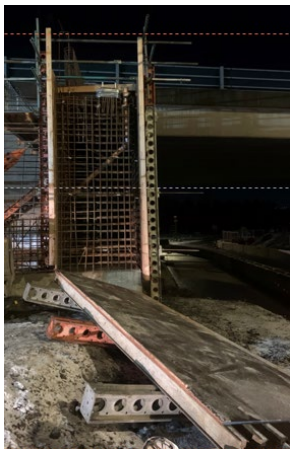


Photo of a shutter post collapse

- Failure of designers to identify areas at risk may result in workers being harmed.
- Failure to provide adequate working area / plant operating area / material lay down area / on-site assembly area design may increase risk of harm at plant / tool / person interfaces.

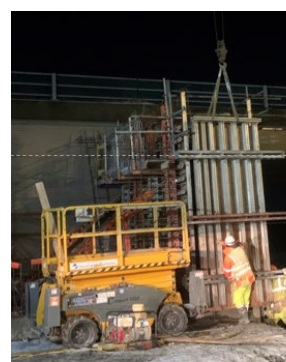
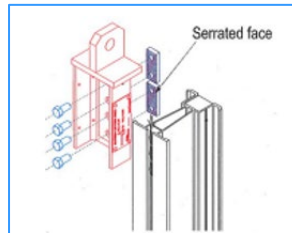


Photo of a shutter being installed



Drawing of designed lifting point

Potential Mitigation Measures

Design

- Provide information on the loading limits of the temporary works design e.g., lifted as per the manufacturer's guidance
- Provide information on drawings and associated documents.

Construction

- Check that the formwork is assembled in accordance with the design.
- Check if a designed lifting ancillary point is installed.
- Select lifting equipment and ancillaries that are suitable for the designed lifting point.
- Check that the lifting plan aligns with the designed drawings.
- If the assembled formwork or lifting plan is not aligned with the design STOP and seek advice.
- Install barriers to remove workers from areas of potential harm.
- Supervisor to talk and walk-through assembly steps and lifting plan before activity starts.
- Temporary Works Coordinator to liaise with supervisory site staff to ensure they are aware of all the potential risks.



Further Guidance and Reading

- [BS 5975:2019](#) Code of Practice for Temporary Works procedures and the permissible stress design of falsework
- [Highways Safety Hub](#) Temporary Works
- [Lifting Operations and Lifting Equipment Regulations 1998 \(LOLER\)](#)

Safety Hub Alert Database

Sub-category 2 Collapse for Temporary Works has 7 alerts.



Please send ideas for Whole Life Design safety shares to wellbeing@nationalhighways.co.uk

LEAN								Improved end user benefits	Reduced Defects	Reduced Reportable Accidents
------	--	--	--	--	--	--	--	----------------------------	-----------------	------------------------------