



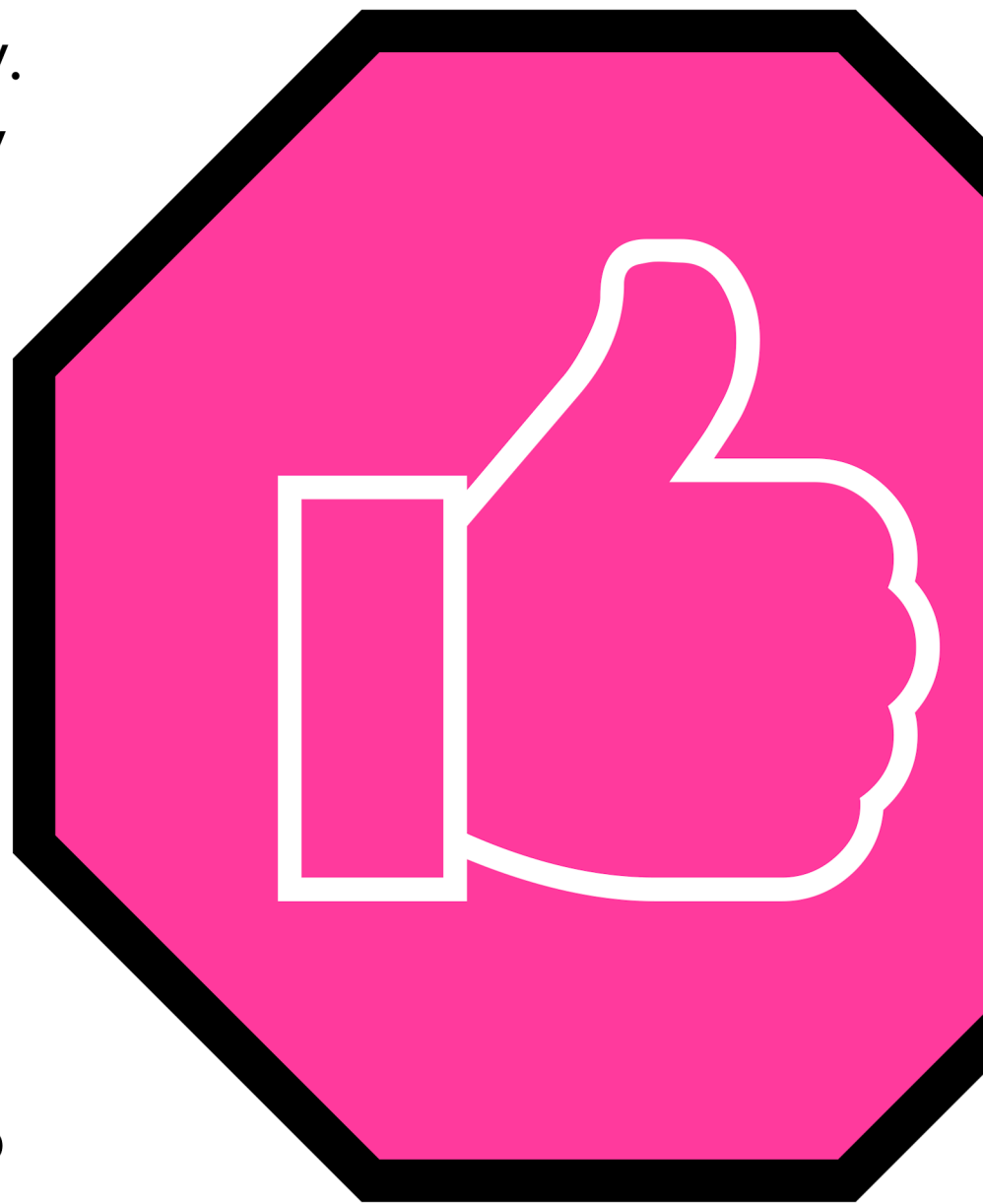
# Thumbs-up

## Thumbs-up

Being stuck or trapped by heavy machinery is the second biggest killer in the construction industry. We want you to change the way we communicate and give the 'thumbs-up' to safer working.

### The rules are simple:

- Understand the different working zones from a safe distance
- Always approach with care and get the plant operator's attention
- Only give your thumbs-up to ask if it's safe or tell someone it's safe
- Always wait for the thumbs-up before you move



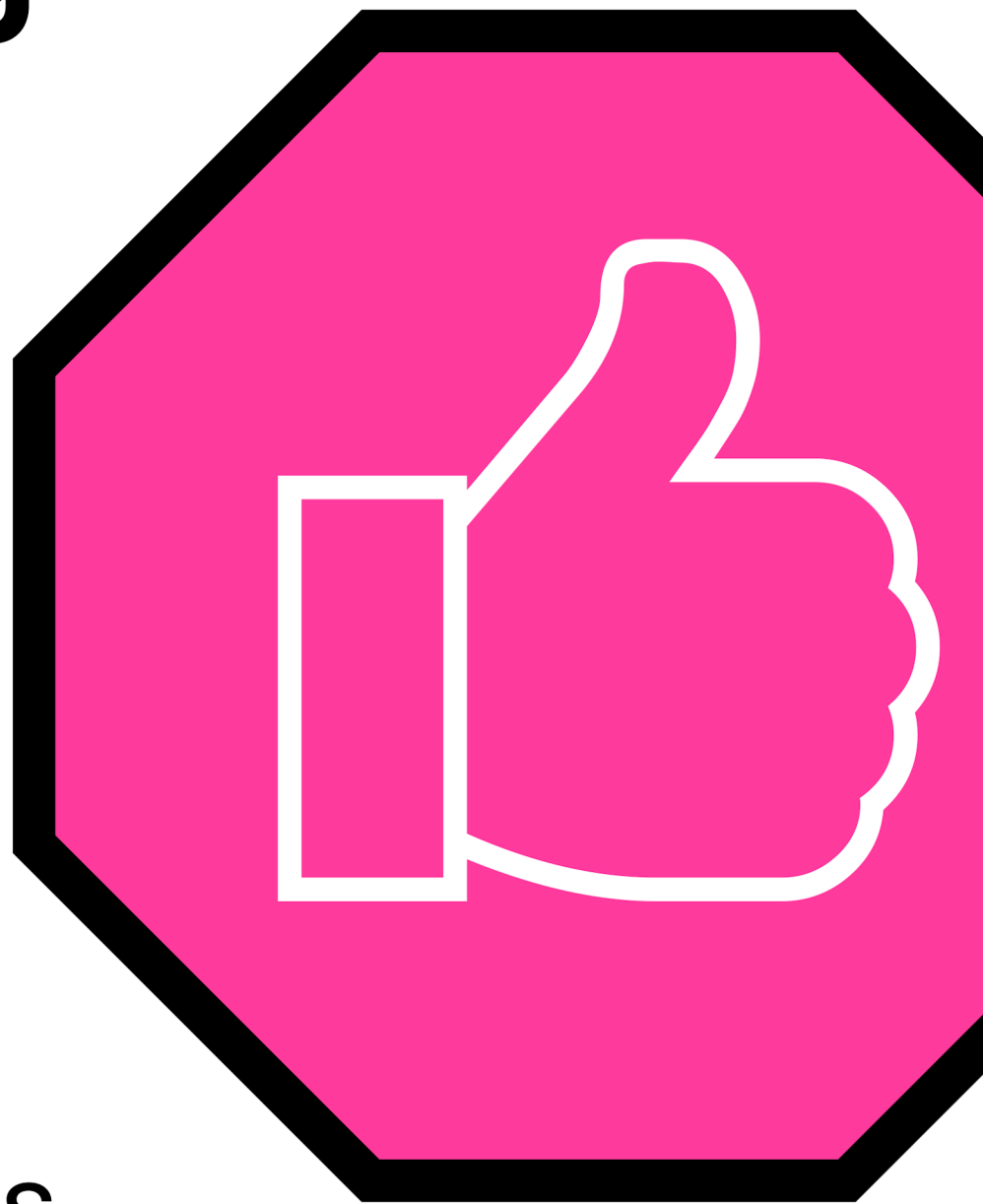


# Be challenging

## Be challenging

Always challenge anyone entering your workspace.

Only give the thumbs-up to authorised persons.





# Be seen

## Be seen

Always wait for the thumbs-up before you make your move into a working area.



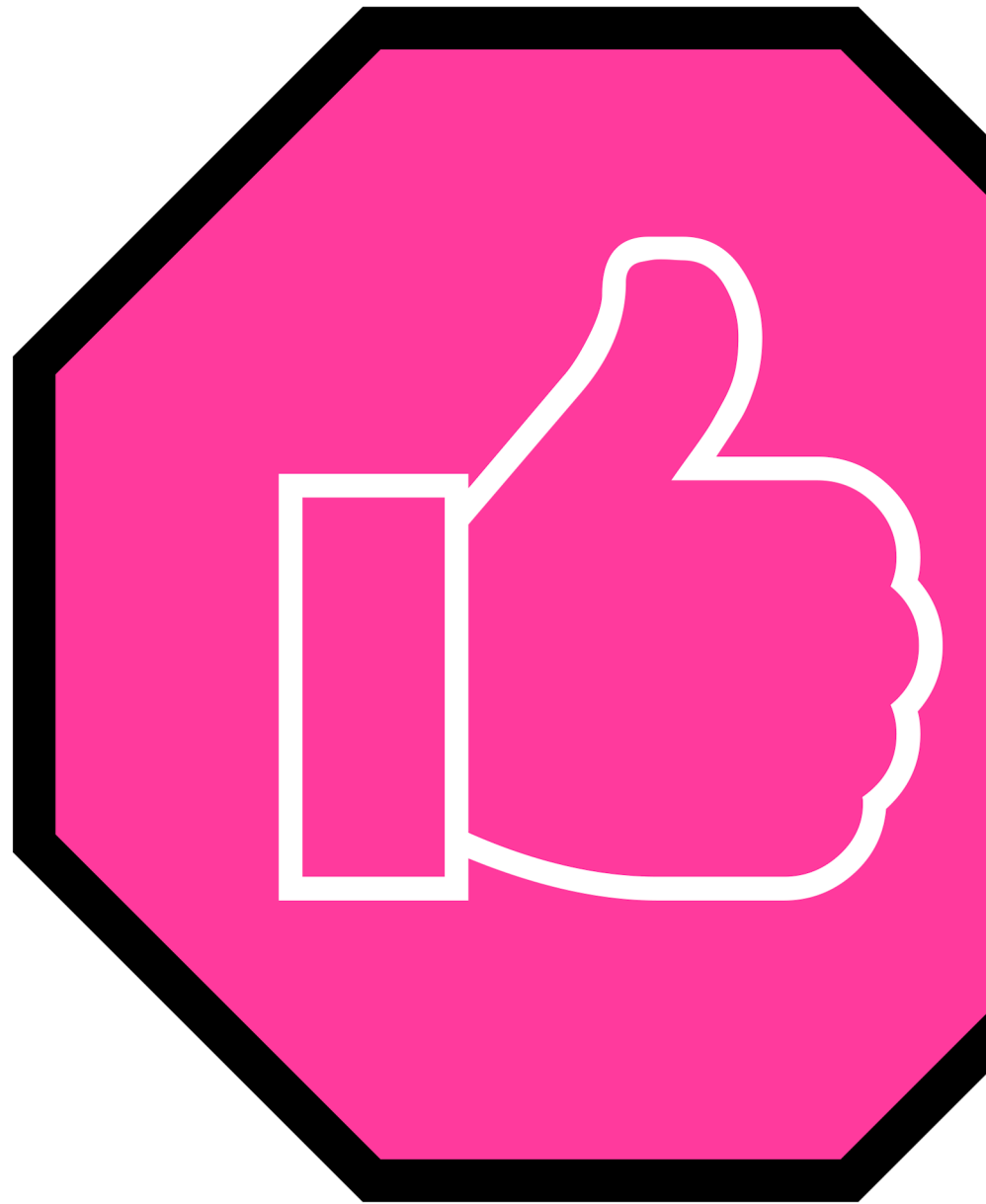


# Be aware

## Be aware

Working environments are always changing.

Always make time to stop and reassess the risks before giving yourselves the thumbs-up to carry on.





# Be heard

## Be heard

If you can't be seen, shout or use a whistle for attention and get the thumbs-up before you make your move.

