



# PEOPLE & PLANT INTERFACE

# SAFE PLANT



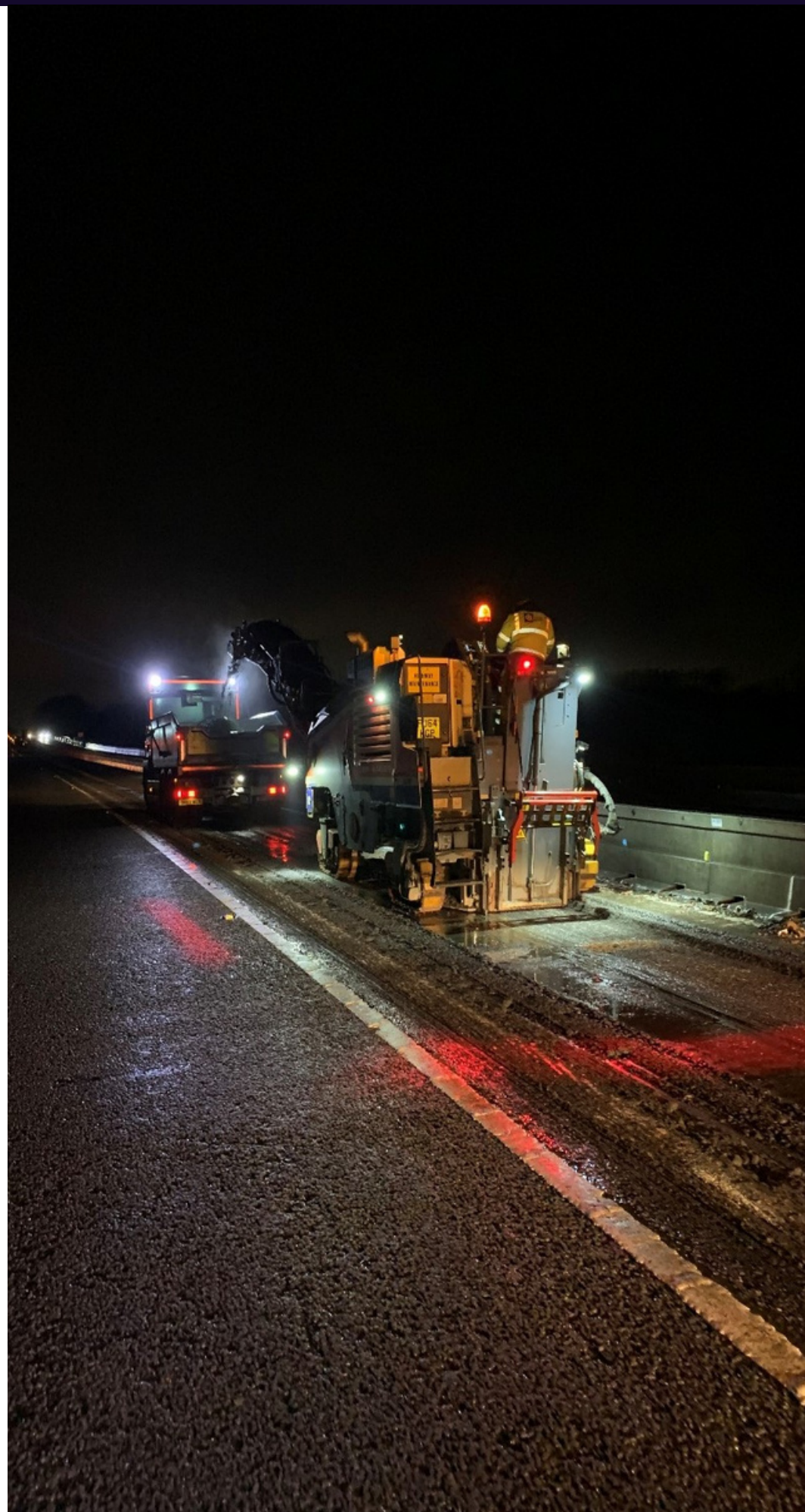
**Safe Plant** is, to recognised standards, right for the job (rather than what is available), inspected & maintained and operated correctly by competent people.

**ALL PLANT & VEHICLES** should:

- **Be suitable** (for intended use, the environment & user, inc. attachments)
- **Be safe for use** (quarantined if not)
- Have an SSoW (Safe System of Work) for use in place
- **Have all-round visibility** (mirrors, sensors, CCTV etc.)
- **Have driver/operator protection** (weather/environment)
- **Have safe means of access/egress** (inc. fall protection measures and slip resistant walking surfaces)
- **Be serviceable** (clean and well maintained in accordance with manufacturers guidance)
- **Have driver protection measures** (ROPS/FOPS)
- **Be regularly maintained & inspected** (corrective, preventative, predictive)
- Be secured (when not in use)

Further details for operators and workers can be found in our TBT.

**Thinking differently, making better decisions and changing lives.**



For more information, contact the SHEA team  
SHEA@octaviusinfrastructure.co.uk  
24/7 SHEA hotline 01737 944720





# PEOPLE & PLANT INTERFACE

# SAFE PLANT



**Safe Plant** is, to recognised standards, right for the job (rather than what is available), inspected & maintained and operated correctly by competent people.

**ALL PLANT & VEHICLES** should:

- **Be suitable** (for intended use, the environment & user, inc. attachments)
- **Be safe for use** (quarantined if not)
- Have an SSoW (Safe System of Work) for use in place
- **Have all-round visibility** (mirrors, sensors, CCTV etc.)
- **Have driver/operator protection** (weather/environment)
- **Have safe means of access/egress** (inc. fall protection measures and slip resistant walking surfaces)
- **Be serviceable** (clean and well maintained in accordance with manufacturers guidance)
- **Have driver protection measures** (ROPS/FOPS)
- **Be regularly maintained & inspected** (corrective, preventative, predictive)
- Be secured (when not in use)

Further details for operators and workers can be found in our TBT.

**Thinking differently, making better decisions and changing lives.**



For more information, contact the SHEA team  
SHEA@octaviusinfrastructure.co.uk  
24/7 SHEA hotline 01737 944720

