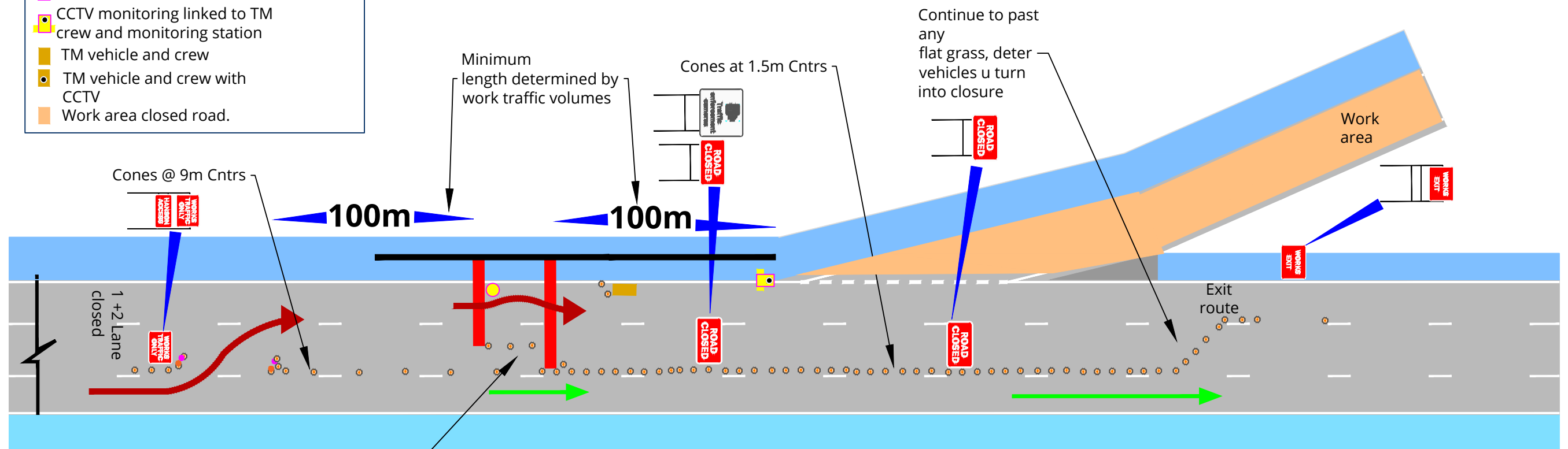


Key

- Cone (Red)
- Warning lamp
- Magenta lamp
- Third party
- Works traffic
- Barrier / obstruction
- Temporary barrier
- Signage where more than one contractor uses access
- Signage where one contractor uses access
- Full width barrier, static signs and cones
- Cone (Red)
- Visible Incursion warning system linked to TM crew and Work Area - Un manned location
- Interactive customer sign
- CCTV monitoring linked to TM crew and monitoring station
- TM vehicle and crew
- TM vehicle and crew with CCTV
- Work area closed road.

Exit slip road with works to full length of slip road.



Operatives shall not stand in lane 2, live traffic side, between a vehicle in the air lock and passing live traffic as there is no 'place of safety'.
Delineation / safety zone to remind TTM crew

Note:
All not all signage to Chapter 8 vol3 Figure 7.2 is shown. Diversion signs must be added.