

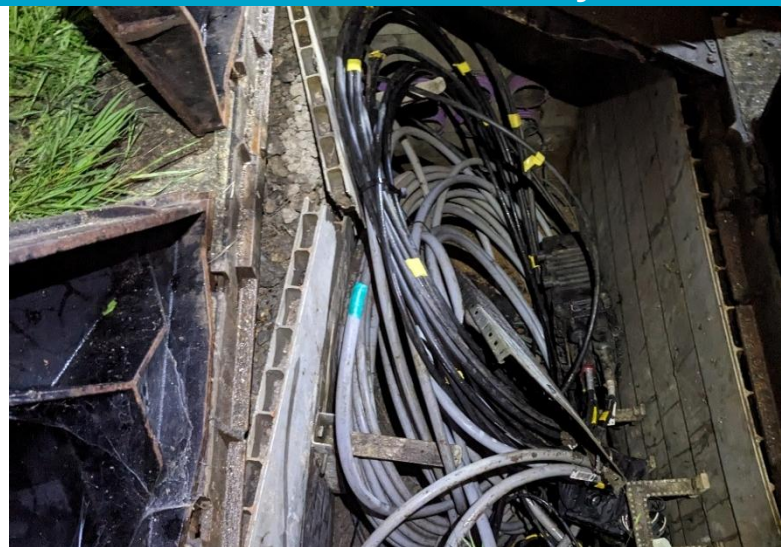
Safety Alert

Failure of technology plastic chambers

26 May 2026

Background information

- Recent site works have identified structural failures in roadside technology and communications plastic chambers.
- Failures have been found at larger plastic chamber installations (i.e. Type A & B), where the cable bearer arm has come away from the chamber wall and is visible at the base of the chamber; it is therefore **IMPORTANT** that the cable bearer arms must **NOT** be used as a stepping point to access the chamber.
- There is a further concern around the safety of the step irons where the mounts and bolt holes are putting a load on the plastic chamber walls.
- An investigation is being conducted by National Highways to establish the extent of this problem; to date failure has only been noted in roadside technology & communications plastic chambers.
- **NOTE:** Traffic signal chambers installed are not considered to be a risk as they are much smaller and typically do not have step irons or cable bearer arms fitted.



Lessons Learnt

- Before entering roadside technology and communications chambers, engineers must check for any damage or structural failure and photograph the chamber walls, cable bearer arms, and step irons. If any damage is found, works must **STOP** and the site must be reported immediately via HART with full location and marker post details. Please also contact IntelligentTransportSystemsGroup@nationalhighways.co.uk with the supporting pictures and location details.
- Until the cause of recent failures is confirmed, it is recommended that no new plastic chambers should be installed. Concrete chambers remain acceptable.
- A Chief Highways Engineer (CHE) Memorandum, which will provide further requirements and advice regarding the adoption of plastic chambers, will be issued in Summer 2026.

NHa368

If you have any queries about this safety alert information announcement or any other safety announcement then please contact HealthSafety&Wellbeingteam@nationalhighways.co.uk