



Safety Alert

Lifting Incident: Shutter Panel slid off flatbed trailer

25 July 2023

The following pages of this safety alert were issued by:

HS2

NHa336

If you have any queries about this safety alert information announcement or any other safety announcement then please contact HealthSafety&Wellbeingteam@nationalhighways.co.uk

home **safe**
and **well**



Lessons Learned

Lifting Incident: Shutter Panel slid off flatbed trailer – Old Oak Common

Date of incident:	09/05/2023	Incident type:	HiPo Level 2
Incident ref:	INC15602en	Contractor:	Select Plant Hire
Location:	Old Oak Common (BBVS)	Issued by:	James Smith
Keyword Search:	Lifting Incident		

Summary of Incident

The team were lifting a pack of panel shutters (4 panels in a bundle, approx. 1006kg in weight per panel) that were being loaded onto a flatbed trailer by a Crawler Crane in preparation for be taken off-site. The Slinger Signaller instructed the Crawler Crane Operator to land a bundle of shutters on top of the bundle which was previously loaded onto the trailer.

The Slinger then removed one of the two slings at the end of the load, when he realised, the load wasn't aligned. The Slinger decided to instruct the Crane Operator to slowly hoist up the load with the remaining sling, alleviating the weight at one end of the bundle with the intention of straightening them.

The Slinger then instructed the Operator to slew slightly to one side to bring in line with the bundle below. The Slings were in the area but adjusted their position when they became uncomfortable with the stability of the load prior to the shutters landing on the ground.

As the driver slewed, it caused the partly slung load to move and slide off the side of the flatbed trailer onto the ground, no injury occurred.

Findings

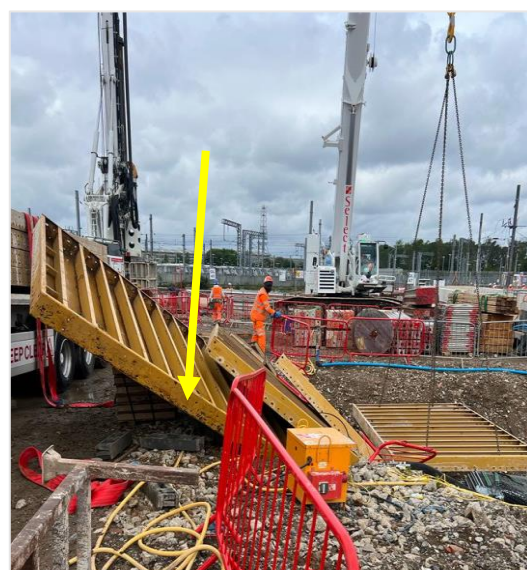
- There was no safe system of work (SSOW) to compliment the schedule of lifts in terms of method of landing and accessing the flatbed.
- Due to the lack of written instruction for safe lifting onto trailers, there was an over reliance on the schedule of common lifts.
- There was a contravention of Expanded Standards failure to follow the schedule of common lifts Packs to have two strops.
- There was one set of podium steps when two were needed, restricting access to both sides of the trailer, to able to manipulate the load into place properly.
- The pack was not fully aligned resulting in the slinger trying to re-position, so all packs were in line. This resulted in the slinger removing one sling to move it into the required position.
- The risk perception of both slingers was deemed low due to experience when using this method at ground level.

Photographs

Photo of these location where the shutter panel came to rest after slipping off the flatbed trailer.



Different angle showing the shutter panels.





Lessons Learned



Lessons Learned and Actions

- Ensure that a suitable SSOW is in place to compliment the schedule of lifts in terms of tasks that are required to support the lifting activity.
- Written instruction via a task briefing should be in place for safe lifting onto trailers to ensure that there isn't an over reliance on the schedule of common lifts which generally only covers to slinging and lifting requirements.
- Never deviate from the lifting standards including the approved schedule of common lifts. If there is an issue the method, then stop work and report to management.
- Prior to commencing the lifting activity, check that all required resources including relevant equipment is available and in place. Do not start until they are.
- Never apply a method that is used in a different environment with different controls. The circumstances, conditions and accepted practice for a particular lift may not suit all lifts in all locations. Always stick to the schedule of lifts and approved SSOW.