



Safety Alert

Cropped pile cap rolled into live carriageway

24 September 2021

The following pages of this safety alert were issued by National Highways' supply chain partner:

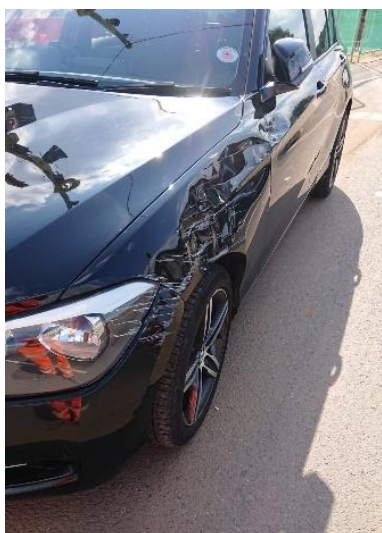
Osborne

STOP Think! Moment

Cropped pile cap rolled into live carriageway



Cropped pile cap



Damage to vehicle



What Happened?

On Saturday 18th September a 1200mm diameter pile was cropped using an excavator and cropper attachment. The cropped section was then placed on the ground nearby. Adjacent to the works was a works access which had been coned to prevent it being used ahead of it being closed with a rigid barrier system.

After it was placed on the ground, the cropped section of pile then became unstable such that it rolled slowly like a wheel. The pile section rolled through the gap in the rigid barriers on to the live carriageway. As it came to a halt it fell to the side and made contact with a car driven by a member of the public.

Impacts

- There were no injuries.
- The car sustained damage to the near-side front wing and front passenger door.
- There was potential for a much more serious incident to have occurred,

This incident has been recorded as a high potential incident (hi-po) and is therefore subject to a full investigation. In the meantime please remember:

1. Objects should be placed on the ground in a way which means that they cannot become unstable or mobile for any reason.
2. Where works are undertaken next to live traffic, the risk assessment should consider the risk of equipment and materials entering the live carriageway and include appropriate control measures.
3. All incidents should be reported in line with the [Osborne Infrastructure Limited reporting process](#) and relevant customer requirements.

**STOP Think! Have a conversation.
Make the safe choice the right choice**