

# IPV & Incursion Working Group Report – September 2023

Nick Nandhra

Project Manager - Major Projects Customer Service and Stakeholder Division

Rev 0 – 06/10/2023

Data Source: HART [WD3]

# Incursions Report - Headline

To date, the total number of incursions recorded since October 2017 is **14226**

Kind of Event	Directorate				
	Major Projects	Operations	Outstations & ROCs	NH Offices & Depots	Grand Total
Incursion; Intentional - To seek benefit	796	1976	595	58	3425
Incursion; Intentional – Because of breakdown	4069	370	141	3	4583
Incursion; Intentional – To seek information	54	86	29	5	174
Incursion; Intentional - Breach of Rolling Road Block (TOS)	4	22	868	8	902
Incursion; Unintentional - Driver confused	842	606	265	40	1753
Incursion; Unintentional - Follow in	146	177	16	3	342
Incursion; Unintentional - Result of accident	275	166	69	5	515
Incursions; Intentional - Blue Light Incursion	46	65	1	0	112
IPV Strike	18	56	10	0	84
Incursion to seek information or benefit	233	1085	174	18	1510
Incursion unintentional - confused or follow in	181	429	210	6	826
<b>Grand Total</b>	<b>6664</b>	<b>5041</b>	<b>2378</b>	<b>146</b>	<b>14226</b>

Kind of Event	By Year (Jan – Dec)						
	Previous Years	2018	2019	2020	2021	2022	2023
Number of All Incursions recorded	788	1874	2055 (+9.7%)	2313 (+12.6%)	3937 (+70.2%)	1808 (-54.1%)	1451

# Incursions Report - Headline

**153** Incursions were recorded for September 2023

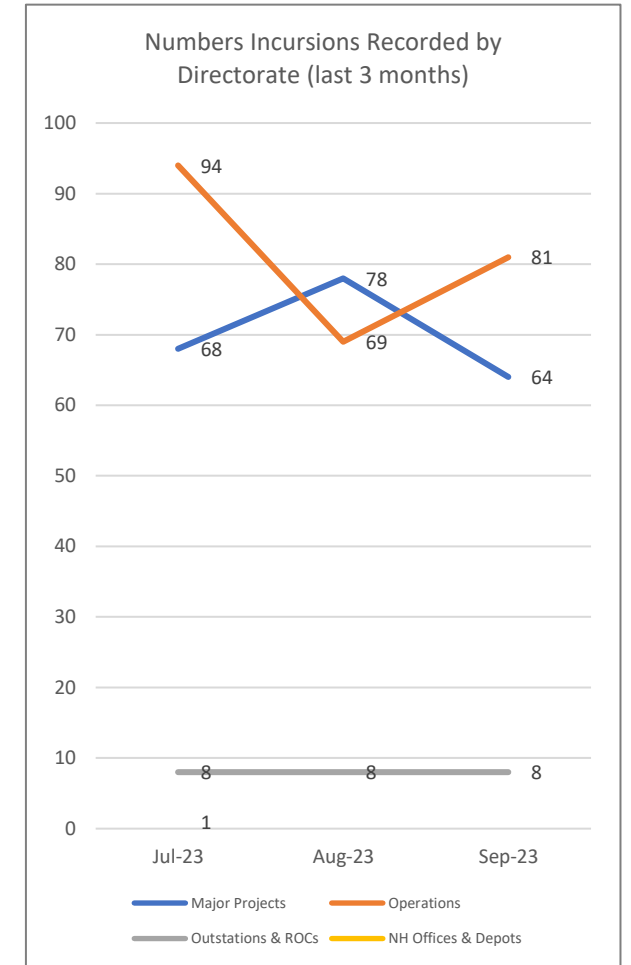
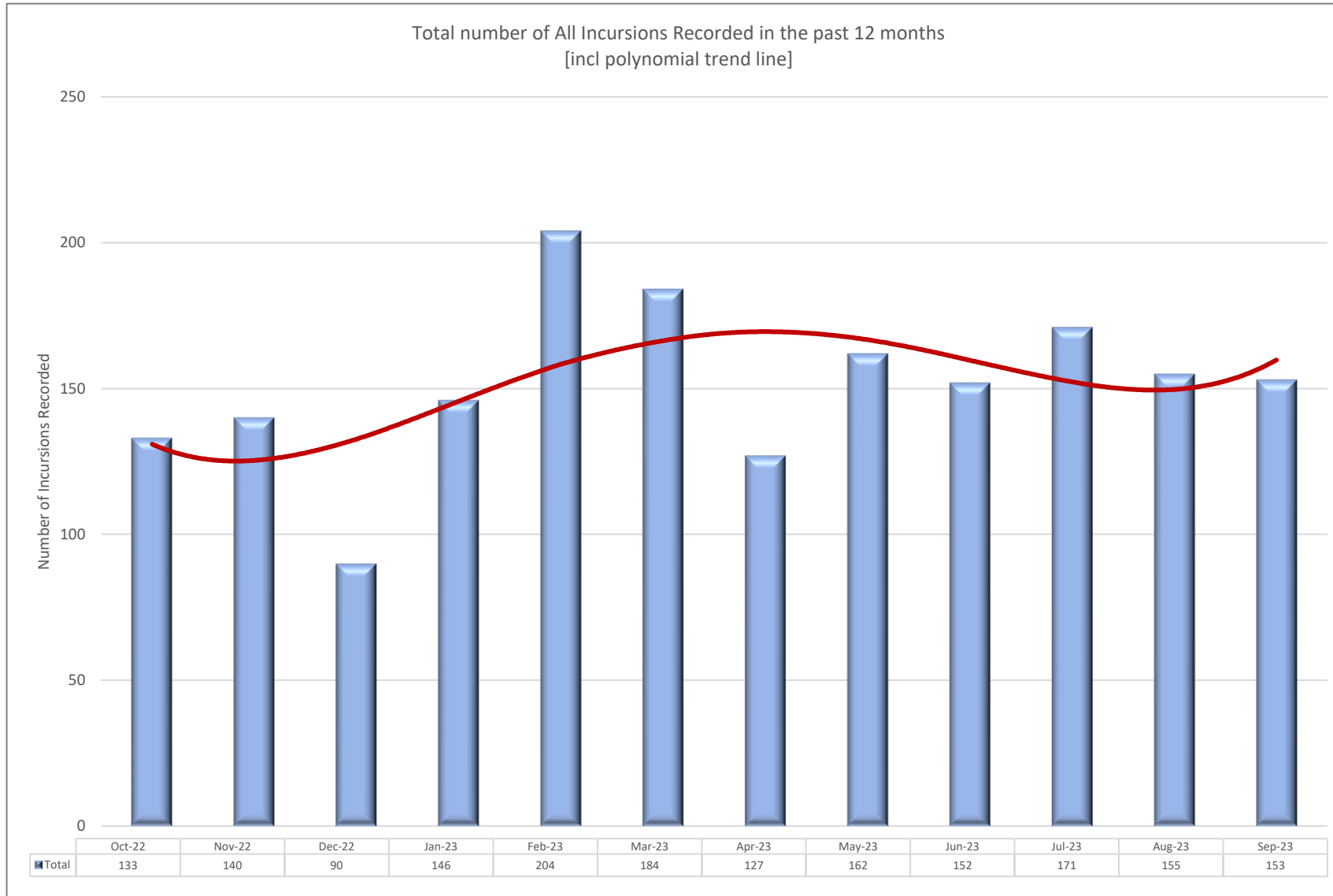
Kind of Event	Directorate				Grand Total
	Major Projects	Operations	Outstations & ROCs	NH Offices & Depots	
Incursion; Intentional - To seek benefit	19	42	6		67
Incursion; Intentional – Because of breakdown	16	12			28
Incursion; Intentional – To seek information	1	1			2
Incursion; Intentional - Breach of Rolling Road Block (TOS)					
Incursion; Unintentional - Driver confused	17	15	2		34
Incursion; Unintentional - Follow in	8	4			12
Incursion; Unintentional - Result of accident	3	2			5
Incursions; Intentional - Blue Light Incursion		3			3
IPV Strike		2			2
<b>Grand Total</b>	<b>64</b>	<b>81</b>	<b>8</b>	<b>0</b>	<b>153</b>

# Incursions Report - Headline

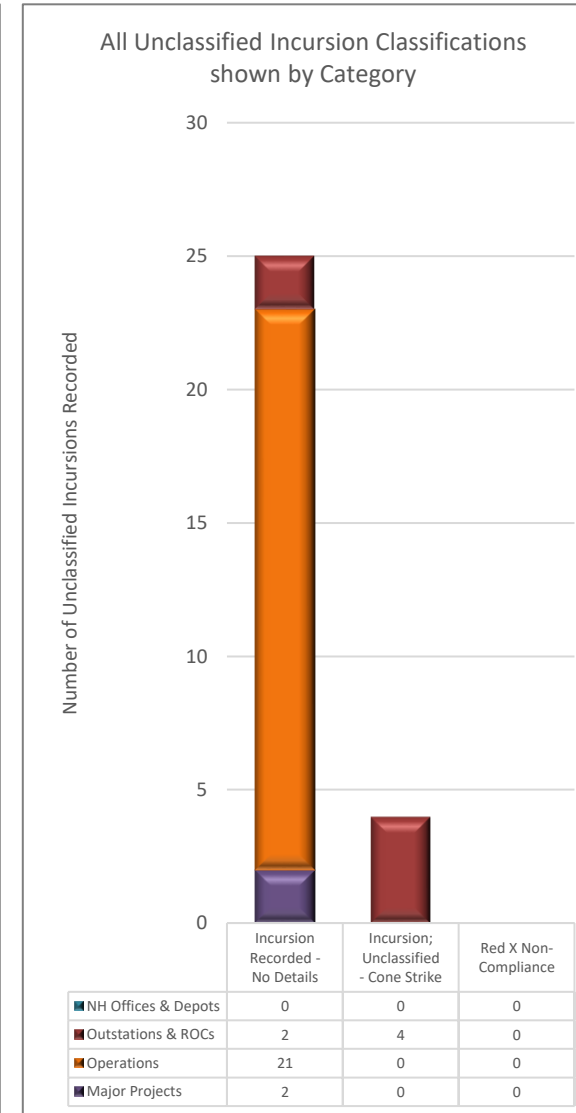
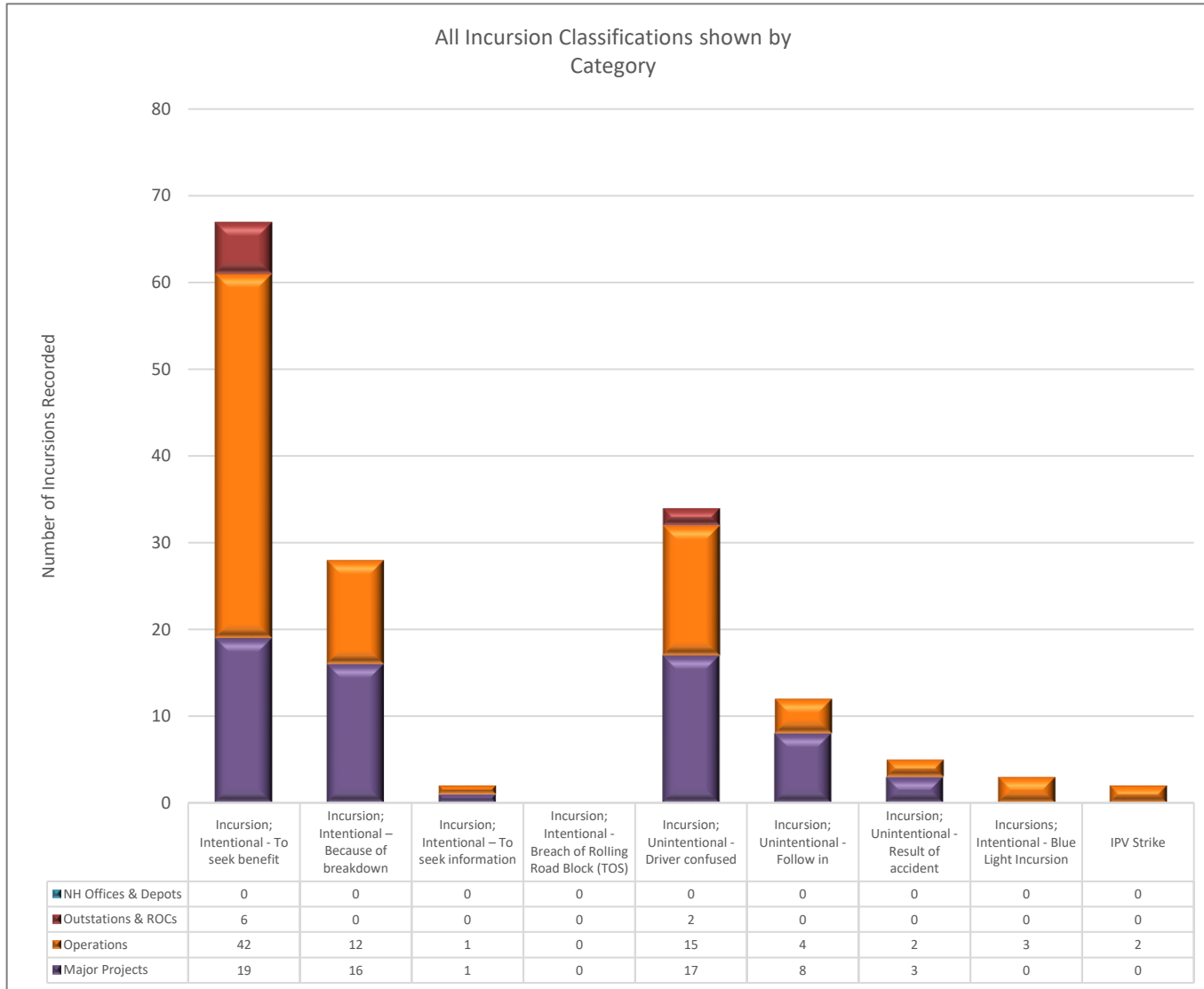
Table shows the average number of incursions recorded by directorate and type in the past 12-month period.

Incursion Category	Directorate			Comments
	Major Projects	Operations	Outstations & ROCs	
Incursion; Intentional - To seek benefit	14.17 (↑)	47.00 (↑)	4.75 (↑)	Average incursions numbers have increased slightly from the previous month in both MP & Operations
Incursion; Intentional – To seek information	1.00 (=)	1.33 (↑)	0.00 (=)	Average incursions numbers are similar to the previous month
Incursion; Intentional – Because of breakdown	25.33 (↓)	5.00 (↑)	0.33 (=)	‘Breakdowns’ is substantially higher in Major Projects (due to the number of long-term closures being installed)
Incursion; Intentional - Breach of Rolling Road Block (TOS)	0.08 (=)	0.00 (=)	0.50 (=)	
Incursion; Unintentional - Driver confused	13.17 (↑)	13.50 (↑)	1.25 (↑)	Average incursions numbers are slightly higher in Operations and broadly similar to previous month
Incursion; Unintentional - Follow in	2.58(↑)	3.92 (↑)	0.17 (=)	Average incursions numbers are slightly higher in Operations and broadly similar to previous month
Incursion; Unintentional - Result of accident	4.08 (↑)	2.25 (↑)	0.42 (↑)	Average incursions numbers are slightly higher in Operations and broadly similar to previous month
IPV Strike	0.25 (=)	1.75 (↓)	0.25 (↓)	Average numbers for ‘IPV Strike’ is higher in Operations than in MP
Incursions; Intentional – Blue Light Incursion	2.92 (↓)	4.67 (↑)	0.08 (↑)	Average numbers for ‘Blue Light’ incursions is higher in Operations & have increased from the previous month

# Incursions Report – All Incursions



# Incursions Report – All Incursions during September 23



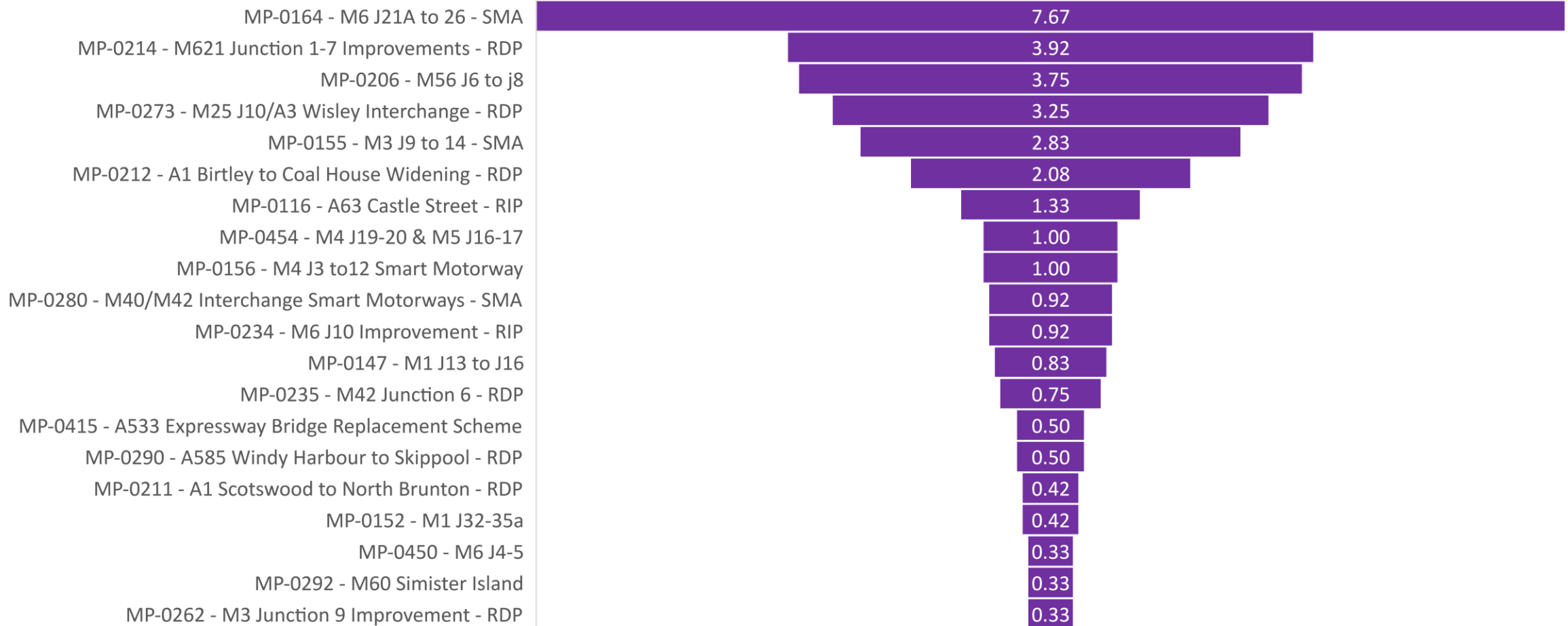
Top incursions categories for this month (across all directorates):

1. Incursion; Intentional - To seek benefit [67]
2. Incursion; Unintentional - Driver confused [34]
3. Incursion; Unintentional - Follow in [12]
4. Incursion; Unintentional - Result of accident [5]
5. Incursions; Intentional - Blue Light Incursion [3]
6. Incursion; Intentional – To seek information [2]
7. IPV Strike [2]
8. Incursion; Intentional - Breach of Rolling Road Block (TOS) [0]

Note - Incursion; Intentional – Because of breakdown [28]

# Incursions Report for Major Projects

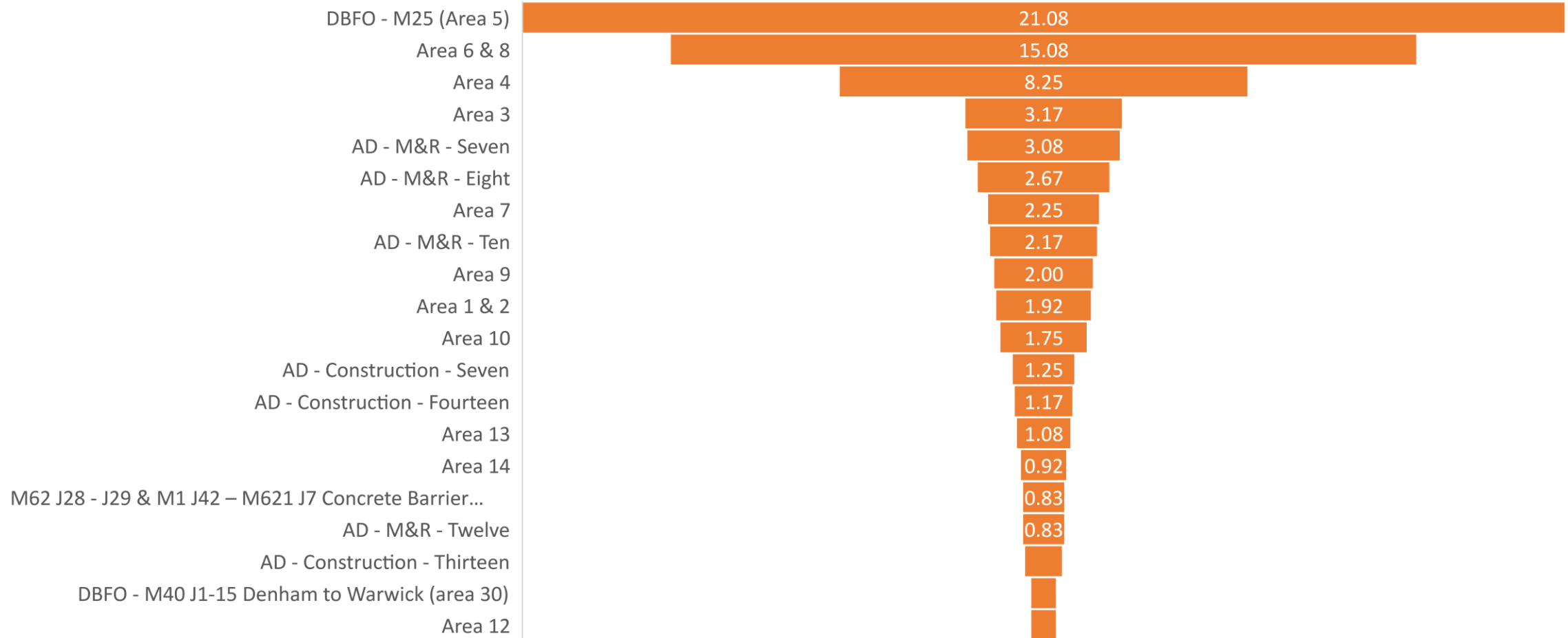
12 month rolling average of the number of all 'Incursions per Month'\*



- Excluding incursions as a result of breakdown
- Duplicate scheme names are as a result of the change from Airsweb to HART

# Incursions Report for Operations Directorate

12 month rolling average of the number of all 'Incursions per Month'\*

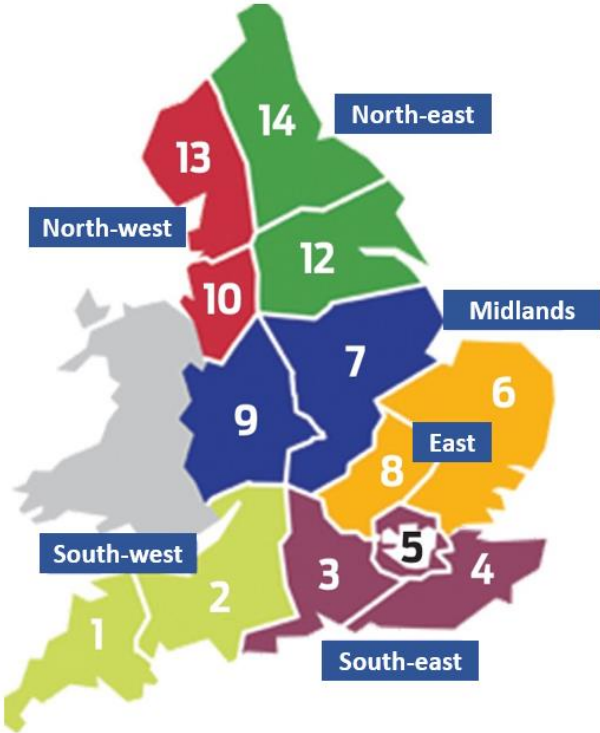


\* Excluding incursions as a result of breakdown



# Incursions Report by Region & Risk

Rolling 6 Month totals of All Incursion <i>as recorded by Regions &amp; ranked in order</i>	Number of Incursions		Total
	Major Projects	Operations	
South East	60	213	273
Midlands	80	79	159
East	7	139	146
Yorkshire & North East	97	38	135
North West	68	38	106
South West	14	19	33



All Incursions (from 2017 to current)

Incursion Risk Ratings for all incursions recorded and in month



September 2023

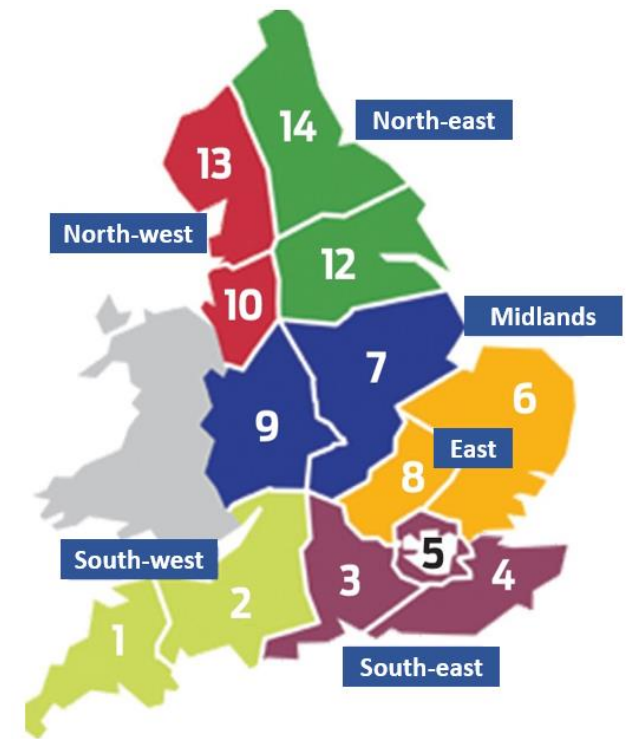


0% 10% 20% 30% 40% 50% 60% 70% 80% 90% 100%

Low Medium High

# Incursions Report by Region & Category

Rolling 6 Month totals of All Incursion <i>as recorded by Regions &amp; ranked in order</i>	Number of Incursions		Total
	Major Projects	Operations	
South East	60	213	273
Midlands	80	79	159
East	7	139	146
Yorkshire & North East	97	38	135
North West	68	38	106
South West	14	19	33



In Month Incursion Figures by Region and by Incursion Type	Incursion Categories																			Totals		
	Seek Benefit		Seek Information		Breach of Rolling Roadblock (TOS)		Driver confused		Follow-In		Result of accident		IPV Strike		Blue Light Incursion		Because of Breakdown					
	MP	Ops	MP	Ops	MP	Ops	MP	Ops	MP	Ops	MP	Ops	MP	Ops	MP	Ops	MP	Ops	MP	Ops	MP	Ops
South East	5	19	0	1	0	0	0	5	0	3	0	1	0	0	0	1	0	1	5	31	36	
East	2	13	0	0	0	0	0	8	0	0	0	0	0	1	0	2	0	8	2	32	34	
Midlands	6	3	0	0	0	0	7	0	1	1	0	0	0	0	0	12	2	26	6	32		
Yorkshire & North East	4	1	1	0	0	0	8	0	4	0	3	0	0	1	0	0	3	1	23	3	26	
North West	2	4	0	0	0	0	1	2	2	0	0	1	0	0	0	1	0	6	7	13		
South West	0	2	0	0	0	0	1	0	1	0	0	0	0	0	0	0	0	2	2	4		

# Blue Light Incursions Report - Headline

**112** Blue Light Incursions have been recorded since February 2022 with **3** being recorded in September 2023 (Edited Record)

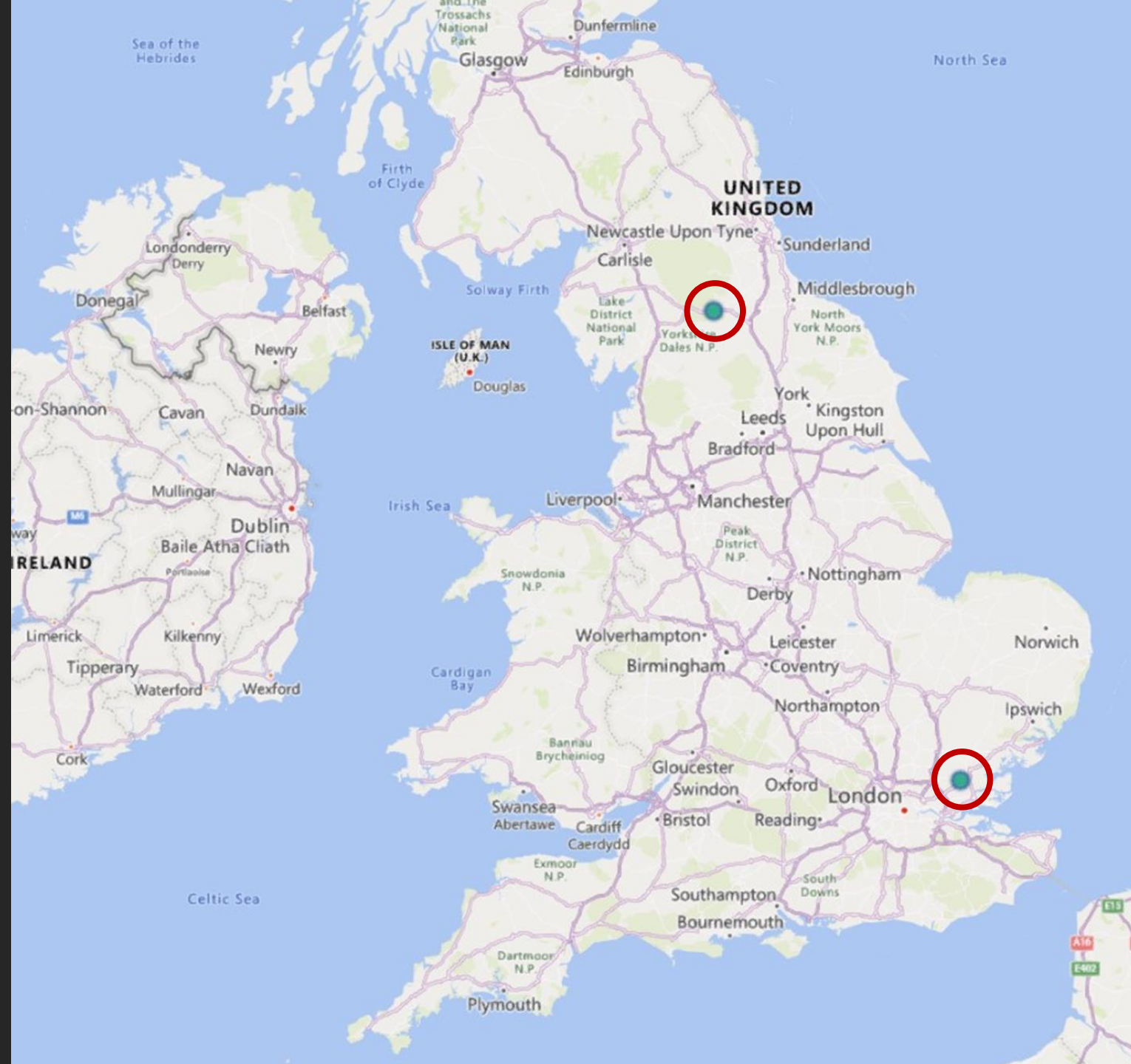
Record ID	Date	Time	Directorate	Region	Programme	Site / Project	Type of Closure	Type of TTM	Location	Specific Location	Details of actual job being done	Describe the facts of what happened	Immediate Actions Taken
145204	02/09/2023	10:12:00	Operations	East - Operations	East - Area Contracts	Area 6 & 8	Not populated	Not populated	Not populated	A12 J15 115/9	A12 Works	Prison vehicle taking Tacho break within closure	Informed that police will be called
145861	25/09/2023	23:50:00	Operations	East - Operations	East - Asset Delivery	AD - M&R - Eight	Lane Closure - Mainline	Relaxation works – Lane closure	Traffic management enclosure	Motorway M1 J10 A N/a	Routine maintenance	Police forcing traffic into a lane 2 closure 25 meters away from the workforce	Workforce heard a saw police car and moved out of the way until all MOP had left closure
145948	26/09/2023	22:15:00	Operations	South East - Operations	South East - DBFO	DBFO - M25 (Area 5)	Not populated	Not populated	Not populated	Not populated	Road closure	Two fire brigade drove through TM closure	TM gang made the area safe and reported to Milestone supervisor

# IPV Strike Report - Headline

**84** IPV strikes have been recorded since October 2019 with **2** being recorded in September 2023 (Edited Record)

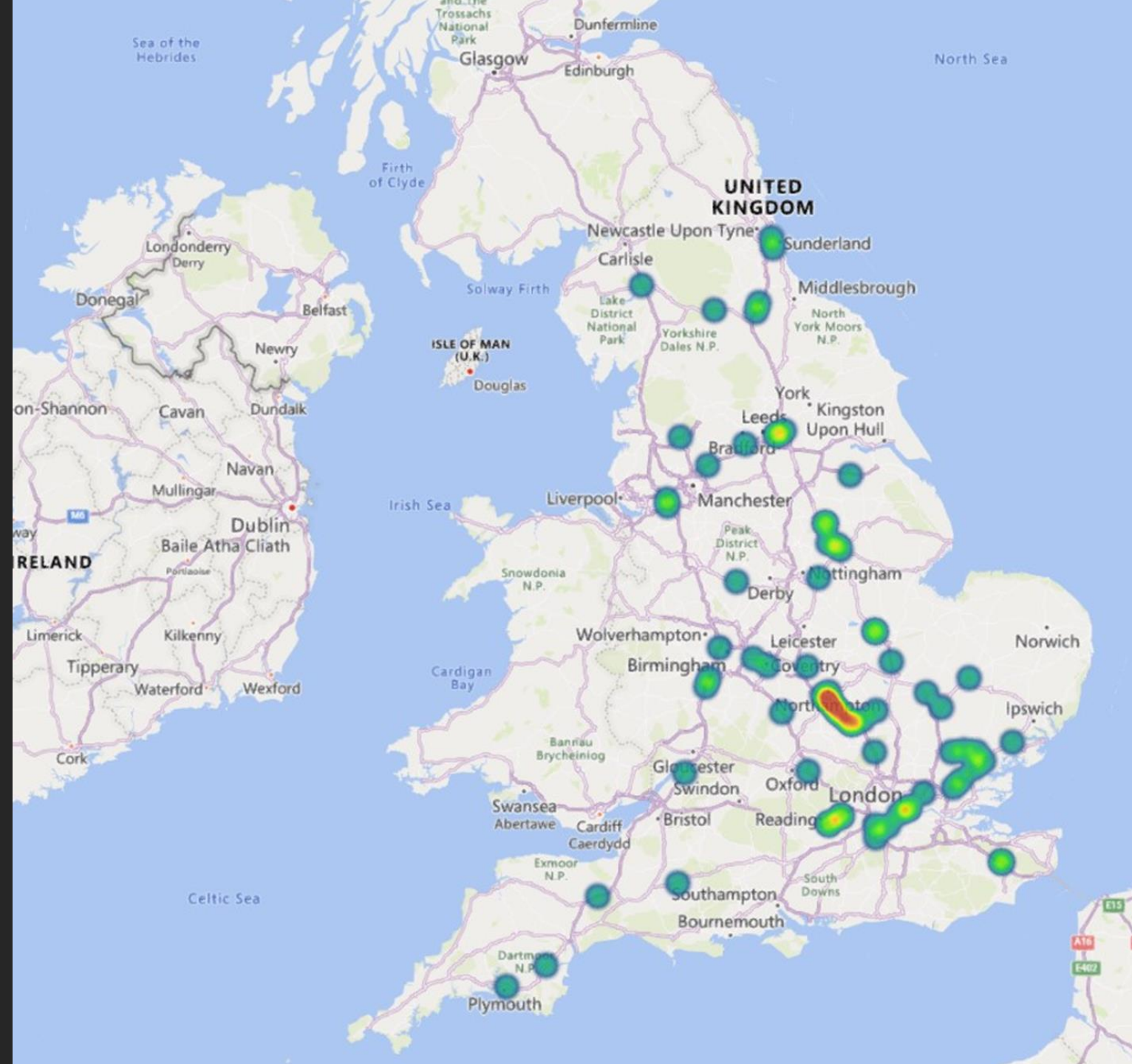
Record ID	Date	Time	Directorate	Region	Programme	Site / Project	Type of Closure	Type of TTM	Location	Specific Location	Details of actual job being done	Describe the facts of what happened	Immediate Actions Taken
145257	04/09/2023	16:30:00	Operations	Yorkshire & North East - Operations	Yorkshire & North East - Asset Delivery	AD - M&R - Fourteen	Lane Closure - Mainline	Relaxation works – Lane closure	Outside works area / safety zone (adjacent to a Live carriageway)	Not populated	Removal of double fast lane closure traffic management	IPV was hit from behind by a Scania HGV, no injuries	Police informed / D&A carried out / vehicles recovered / investigation underway
145776	21/09/2023	02:19:00	Operations	East - Operations	East - Area Contracts	Area 6 & 8	Lane Closure - Mainline	Standard works – Narrow Lane system inc. slips and links	Not populated	Not populated	Works HGV Setting out barriers on A12	Sub Contractor HGV clipped roughly 200m of cones, sending them into the live lane, which led to an incursion	TM corrected the cones and live lane reopened

# Heatmap of IPV Strikes recorded during September 23





# Heatmap of all IPV Strikes recorded



# Incursions Report

Directorate: Major Projects

Region: Midlands

3 Month Incursion analysis

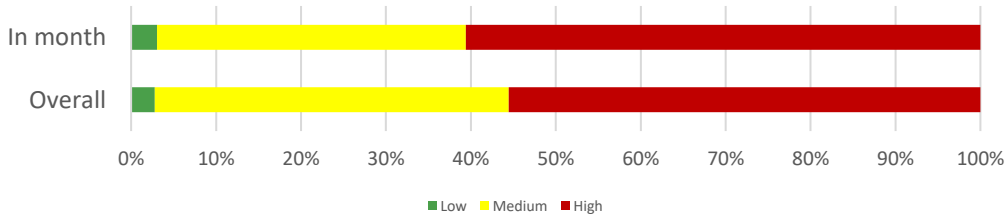
- MP-0152 - M1 J32-35a a total of 12 incursions have been recorded; with a 25% increase in 'Seeking Benefit' type incursions together with a 50% increase in 'Driver confused' 100% increase in 'Follow in' type incursions

- Bottom left – Project Risk Rating with 'In-month' rating being worse than the 'Overall' rating & incursion rate per length of TM
- Bottom middle – Time profile for 'Seeking Benefit' incursion types
- Bottom right – localised heatmap of 'Seeking Benefit'

Type of Roadworks: Full & Lane Closures (Mainline & Slip)

Type of TTM: Not Populated / Relaxed works (Lane & slip & links closures)

## Project Risk Rating

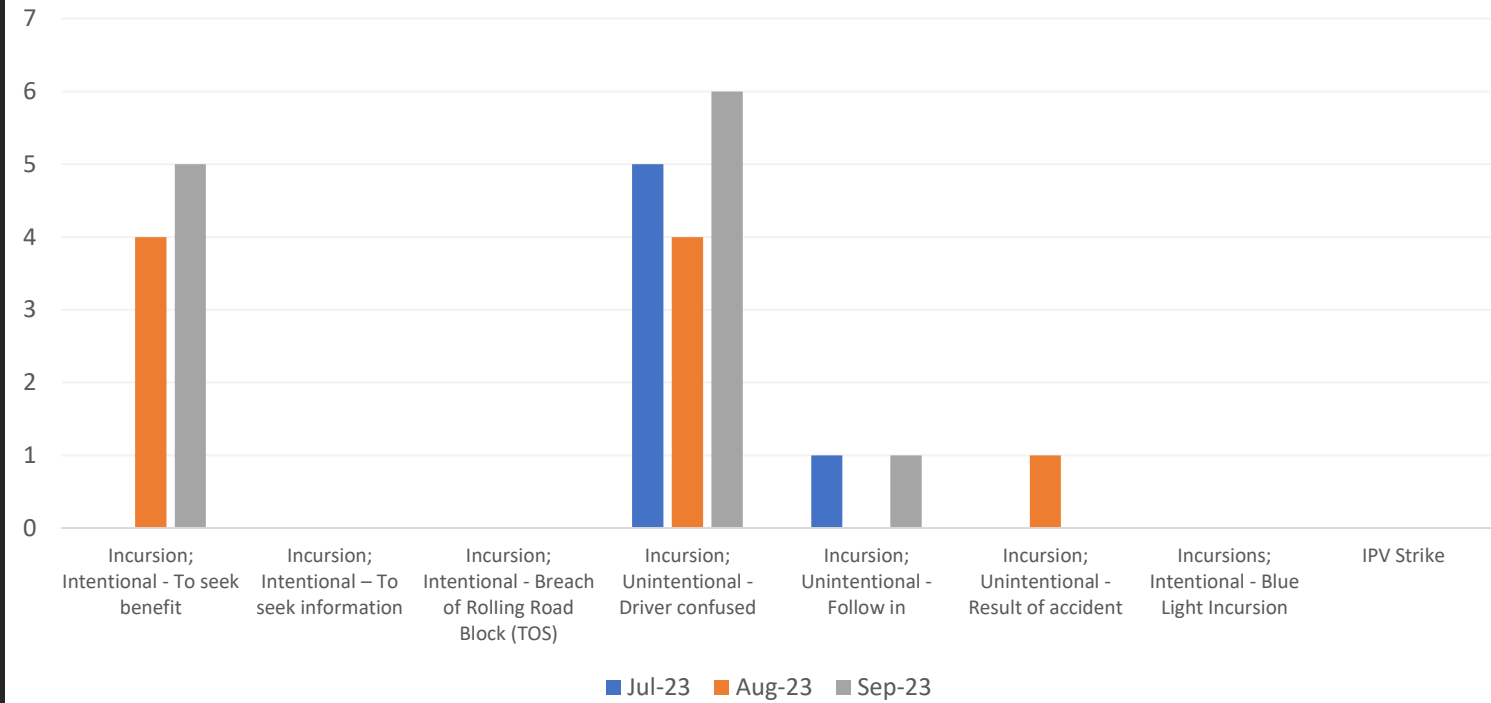


## Incursion rate per length of TM (Unknown)

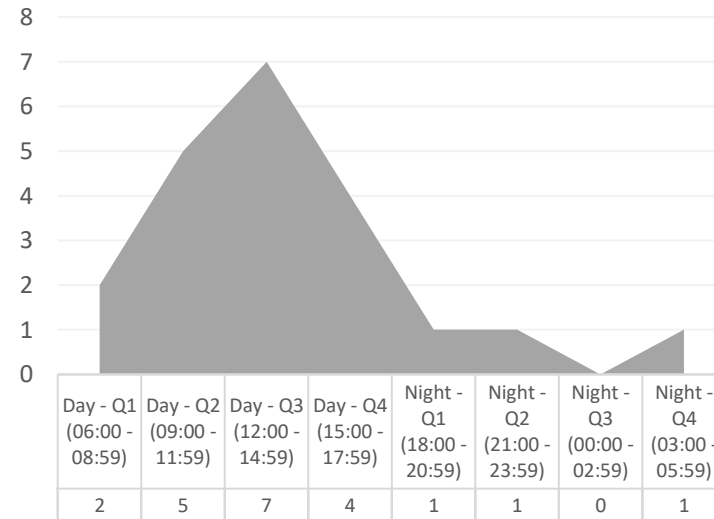
Project Incursion Rate: Length of TM data not available

Breakdown Rate: Length of TM data not available

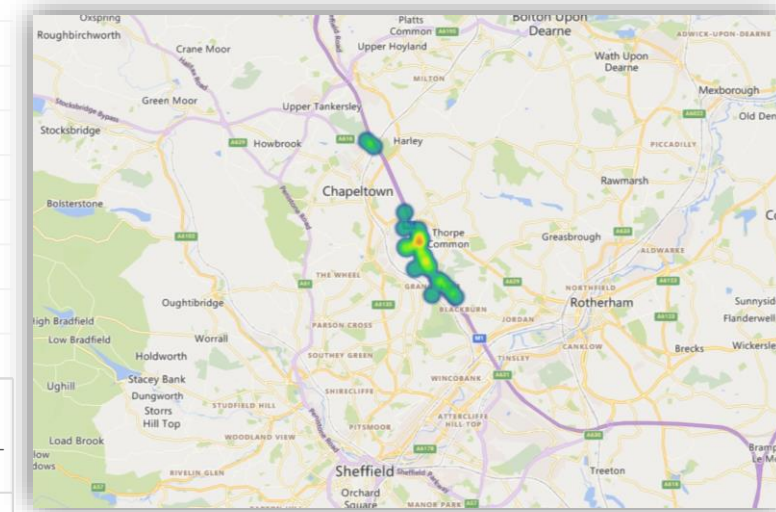
## MP-0152 - M1 J32-35a



## Time Profile of Incursions recorded



## Heatmap



# Incursions Report

Directorate: Major Projects

Region: North West

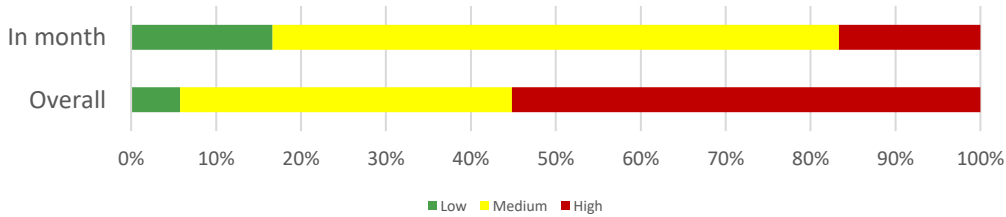
3 Month Incursion analysis

- MP-0212 - A1 Birtley to Coal House Widening - RDP a total of 13 incursions have been recorded; with a 300% increase in 'Follow in' type incursions together with a 100% increase in 'Driver confused' 100% increase in 'To seek information' no change from the previous month in Seeking Benefit' type incursions
- Bottom left – Project Risk Rating with 'In-month' rating being worse than the 'Overall' rating & incursion rate per length of TM
- Bottom middle – Time profile for 'Seeking Benefit' incursion types
- Bottom right – localised heatmap of 'Seeking Benefit'

Type of Roadworks: Full & Lane Closures (Mainline & Slip)

Type of TTM: Not Populated / Relaxed works (Lane & slip & links closures)

## Project Risk Rating

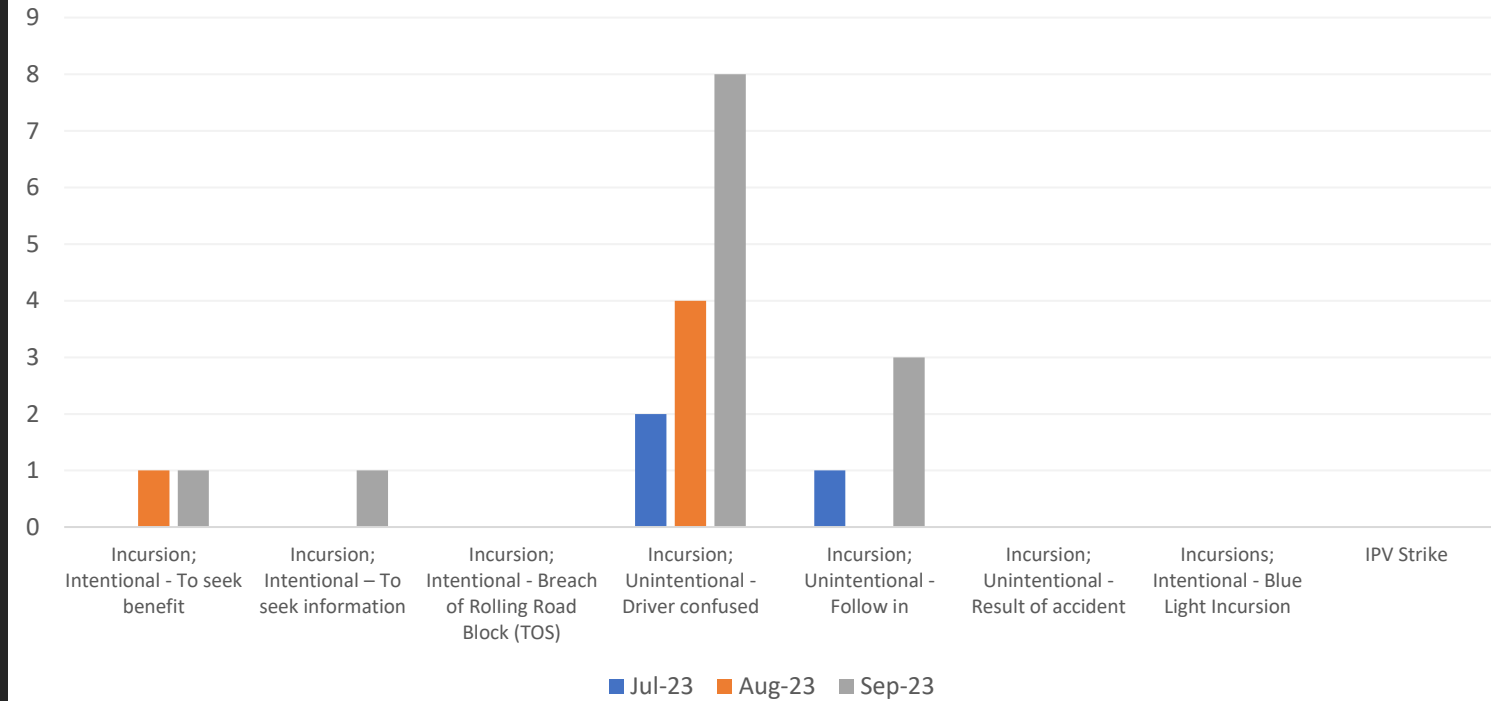


## Incursion rate per length of TM (35.00 km)

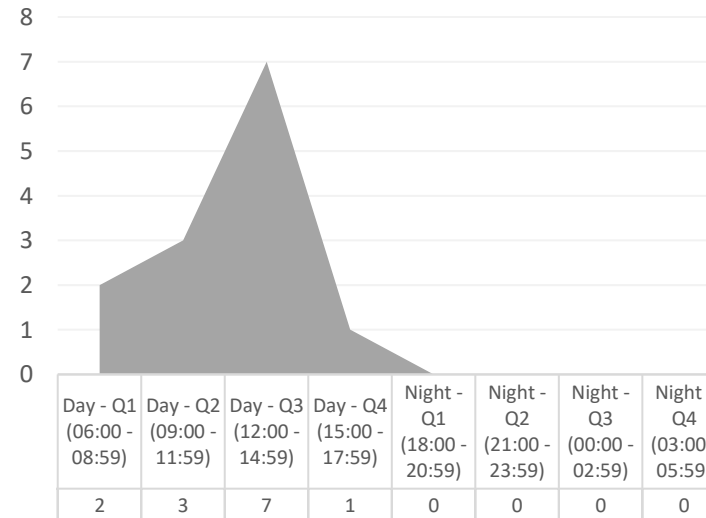
Project Incursion Rate: 4.94 incursions/km or 7.95 incursions/miles

Breakdown Rate: 1.60 incidents/km or 2.57 incidents/miles

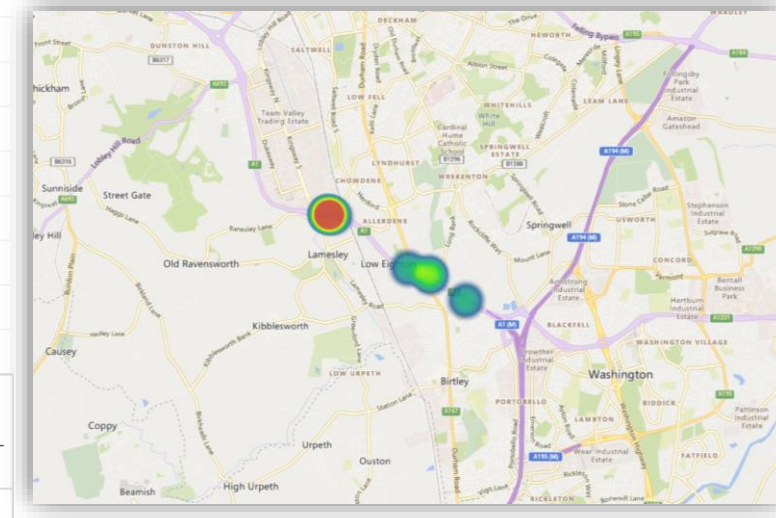
## MP-0212 - A1 Birtley to Coal House Widening - RDP



## Time Profile of Incursions recorded



## Heatmap





# Incursions Report

Directorate: Operations

Region: South East

3 Month Incursion analysis

- DBFO - M25 (Area 5) a total of 17 incursions have been recorded; with a 300% increase in 'Driver confused' type incursions together with a 100% increase in 'Result of accident' 100% increase in 'Blue Light' 100% increase in 'Follow in' and no change from the previous month in To seek information' incursions, with a 17% decrease in 'Seeking Benefit' type incursions

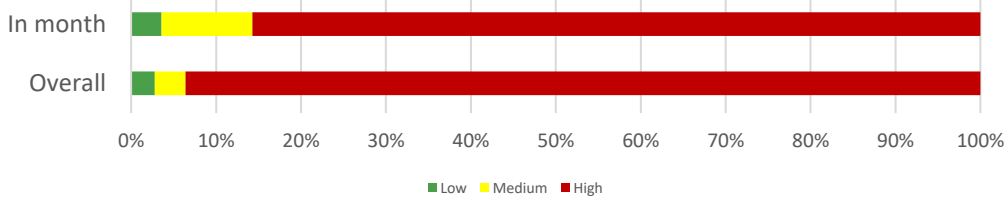
- Bottom left – Area Incursion Risk Rating with 'In-month' rating being worse than the 'Overall' rating
- Bottom middle – Time profile for 'all' incursion types
- Bottom right – localised heatmap 'all' incursion types

Type of Roadworks: Not Populated / Lane Closures (mainline)

Type of TTM: Not Populated / Hard shoulder closures

\* Excluding Breakdown type incursions

## Area Incursion Risk Rating

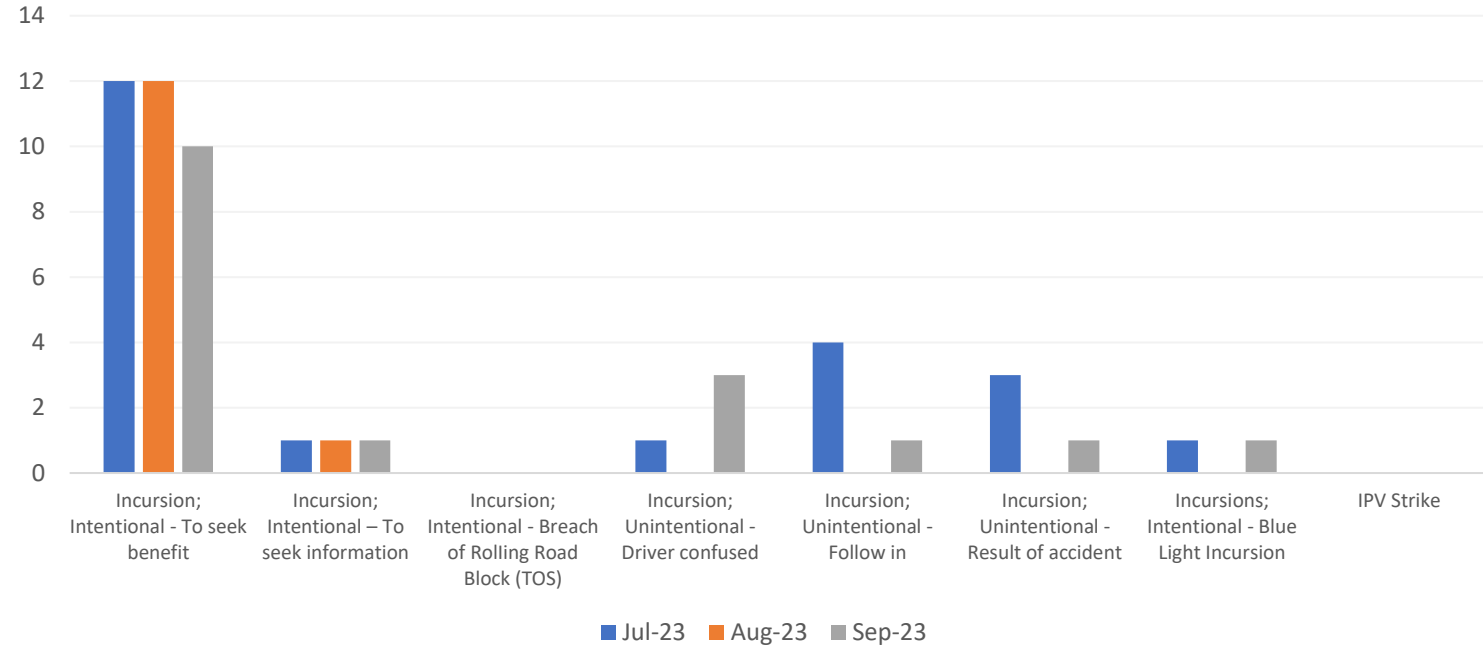


## Incursion rate per length of TM (Unknown)

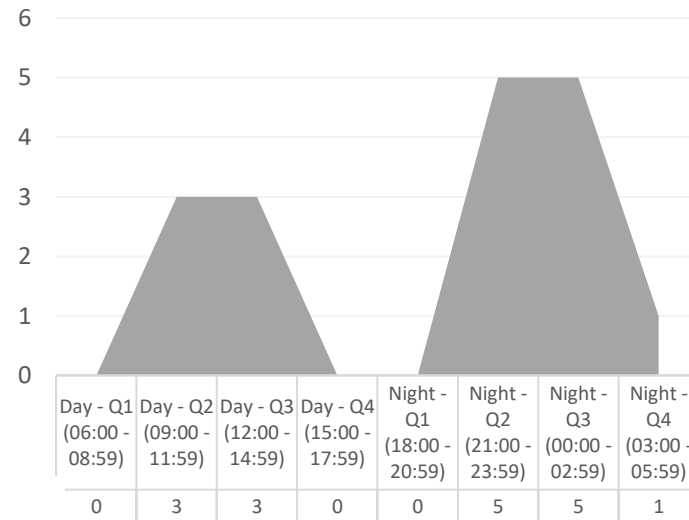
Project Incursion Rate: Length of TM data not available

Breakdown Rate: Length of TM data not available

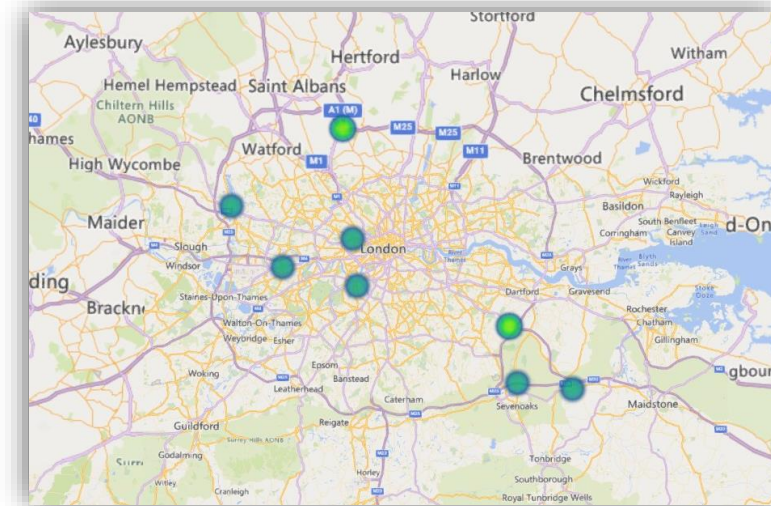
## Area 5



## Time Profile of Incursions recorded



## Heatmap



# Incursions Report

Directorate: Operations

Region: East

3 Month Incursion analysis

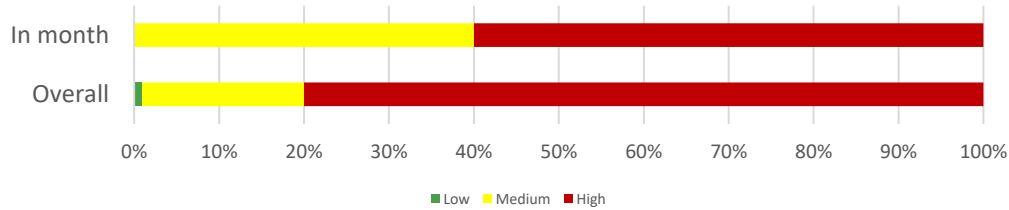
- AD - M&R - Eight a total of 14 incursions have been recorded; with a 400% increase in 'Seeking Benefit' type incursions together with a 800% increase in 'Driver confused' 100% increase in 'Blue Light' type incursions
- Bottom left – Area Incursion Risk Rating with 'In-month' rating worse than 'Overall' rating
- Bottom middle – Time profile for 'all' incursion types recorded
- Bottom right – localised heatmap of 'all' incursion types recorded

Type of Roadworks: Not Populated / Lane Closures (mainline)

Type of TTM: Not Populated / Hard shoulder closures

\* Excluding Breakdown type incursions

## Area Incursion Risk Rating

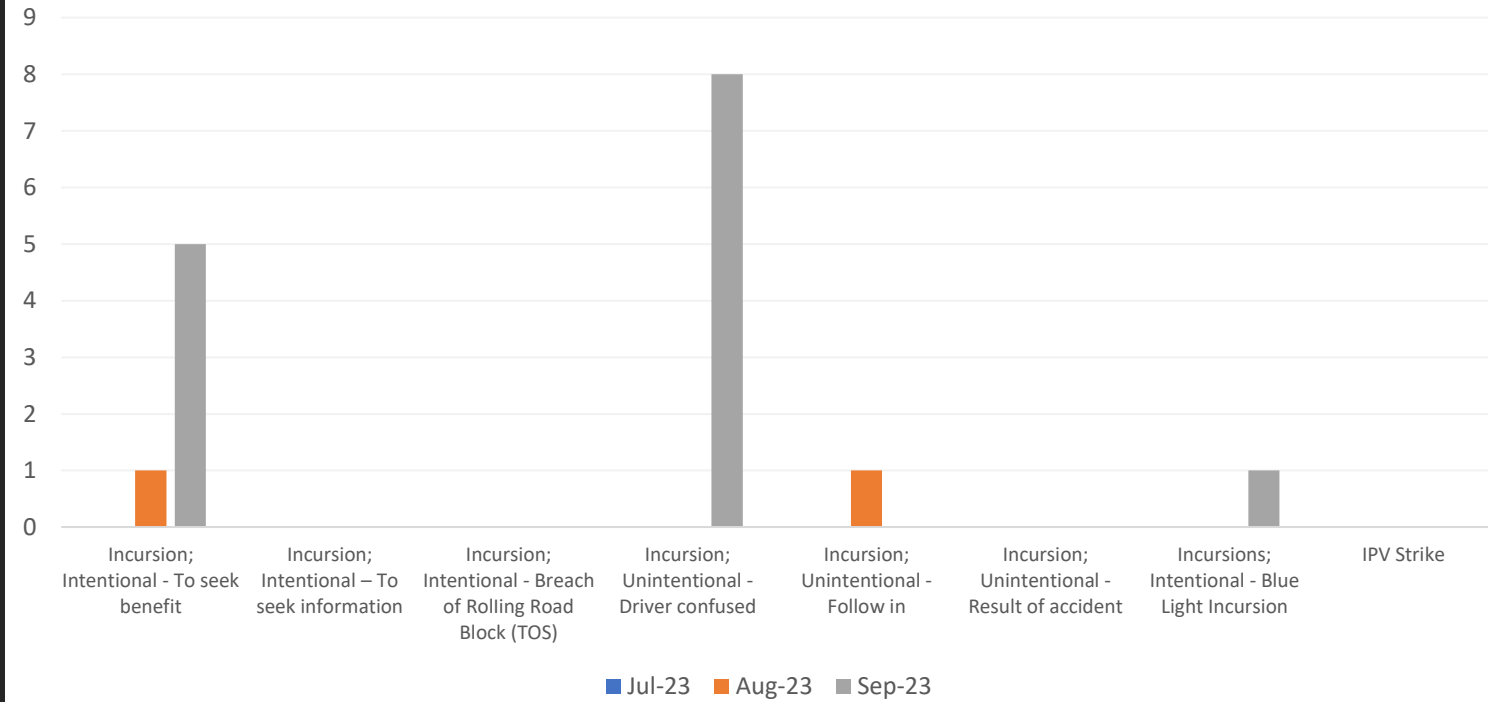


## Incursion rate per length of TM (Unknown)

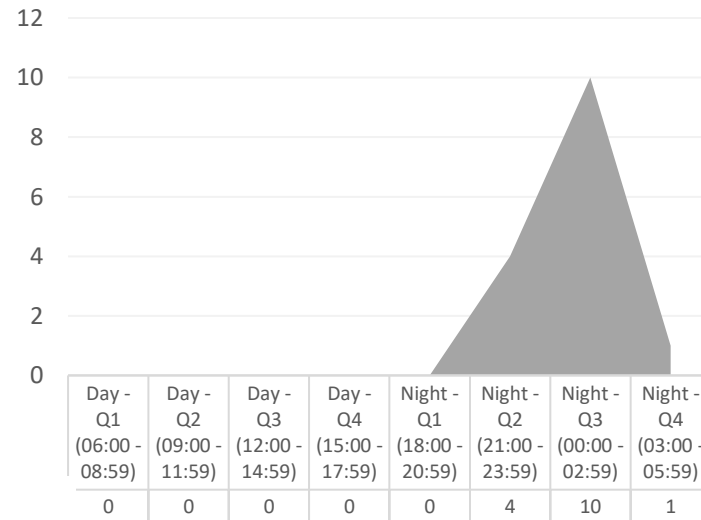
Project Incursion Rate: Length of TM data not available

Breakdown Rate: Length of TM data not available

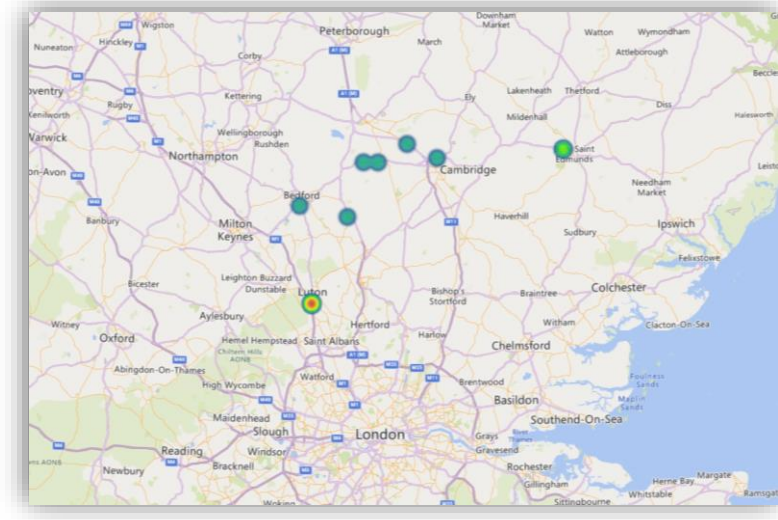
## AD - M&R - Eight



## Time Profile of Incursions recorded



## Heatmap



# Incursions Report

Directorate: Operations

Region: East

3 Month Incursion analysis

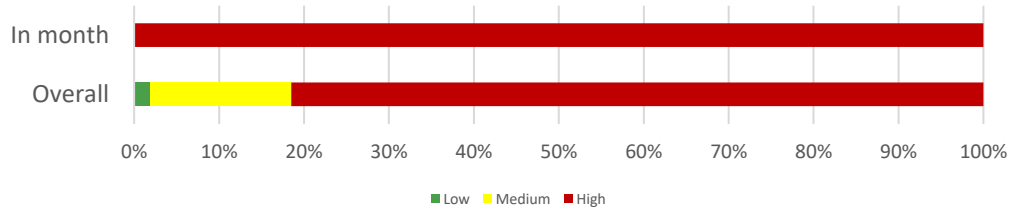
- Area 6 & 8 a total of 10 incursions have been recorded; with a 100% increase in 'IPV Strike' type incursions together with a 11% decrease in 'Seeking Benefit' incursions, with a 50% decrease in 'Blue Light' type incursions
- Bottom left – Area Incursion Risk Rating with 'In-month' rating worse than 'Overall' rating
- Bottom middle – Time profile for 'all' incursion types recorded
- Bottom right – localised heatmap of 'all' incursion types recorded

Type of Roadworks: Not Populated / Lane Closures (mainline)

Type of TTM: Not Populated / Hard shoulder closures

\* Excluding Breakdown type incursions

## Area Incursion Risk Rating

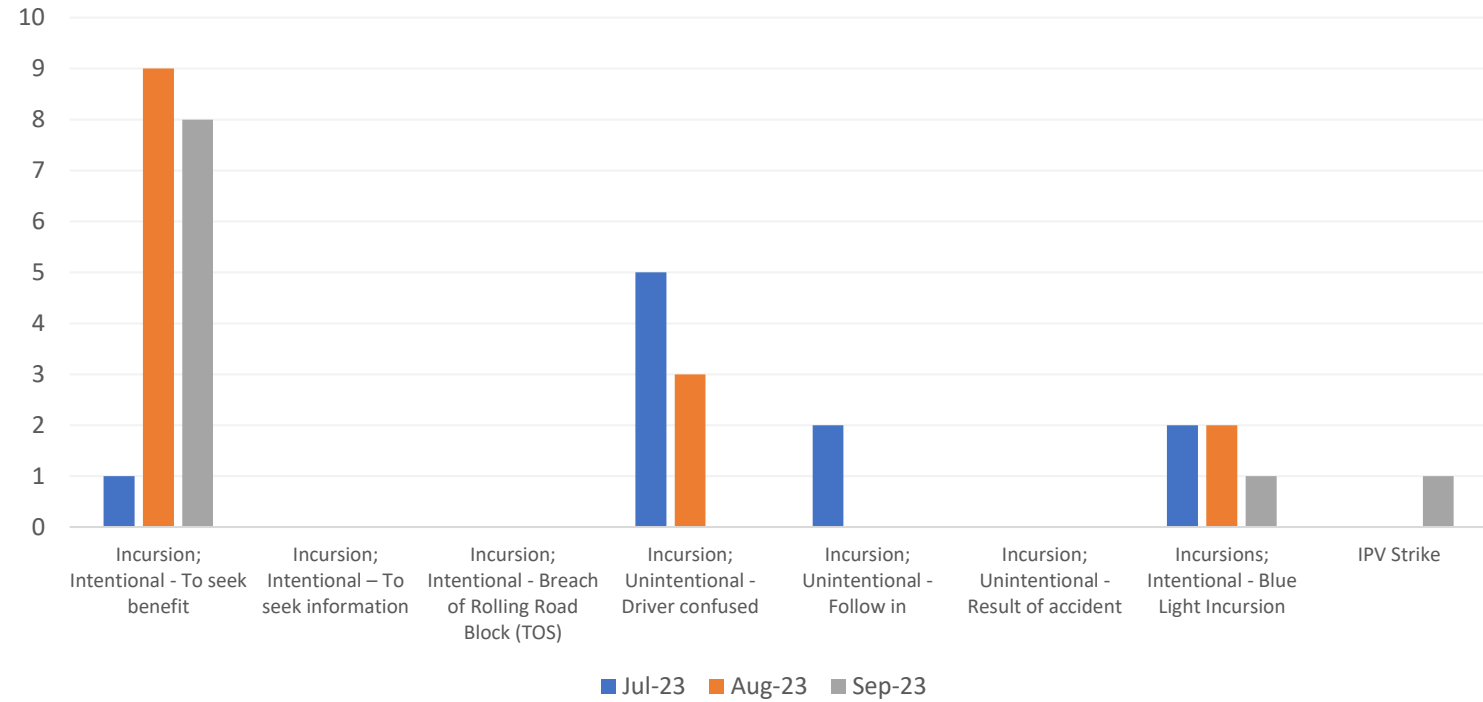


## Incursion rate per length of TM (Unknown)

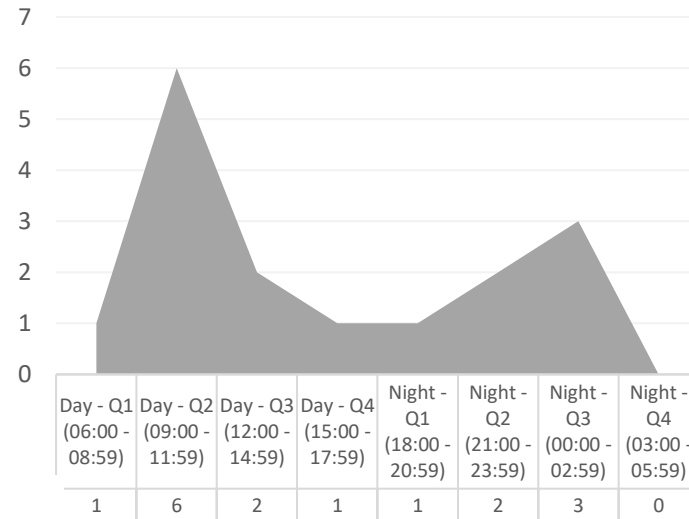
Project Incursion Rate: Length of TM data not available

Breakdown Rate: Length of TM data not available

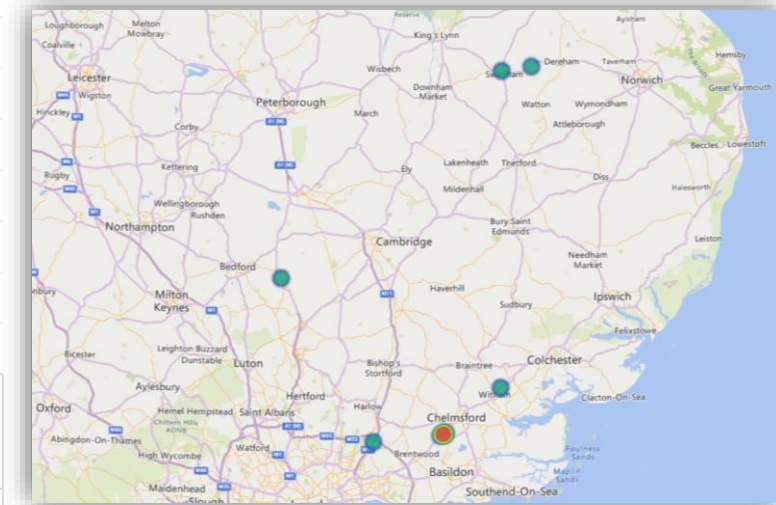
## Area 6 & 8



## Time Profile of Incursions recorded



## Heatmap



# Incursions Report

Directorate: Operations

Region: South East

3 Month Incursion analysis

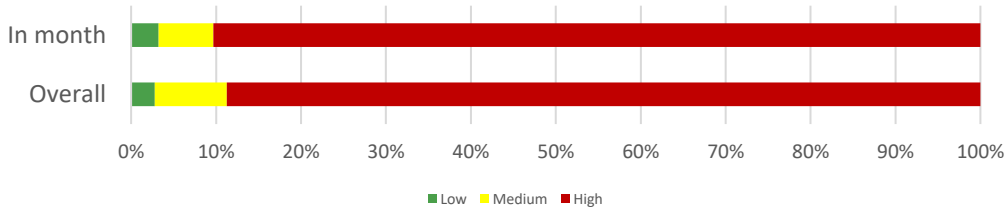
- Area 4 a total of 9 incursions have been recorded; with a 250% increase in 'Seeking Benefit' type incursions together with a 100% increase in 'Driver confused' 100% increase in 'Follow in' type incursions
- Bottom left – Area Incursion Risk Rating with 'In-month' rating worse than 'Overall' rating
- Bottom middle – Time profile for 'all' incursion types recorded
- Bottom right – localised heatmap of 'all' incursion types recorded

Type of Roadworks: Not Populated / Lane Closures (mainline)

Type of TTM: Not Populated / Hard shoulder closures

\* Excluding Breakdown type incursions

## Area Incursion Risk Rating

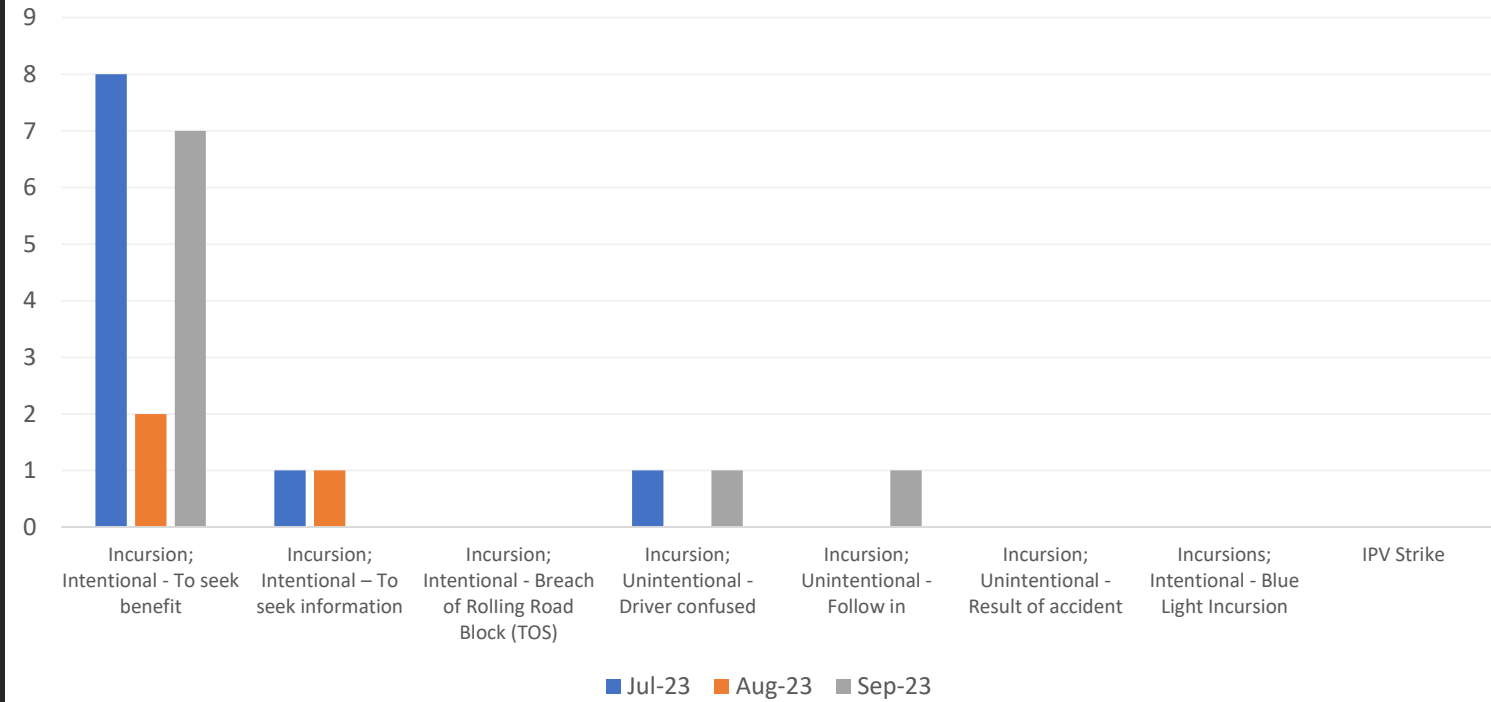


## Incursion rate per length of TM (Unknown)

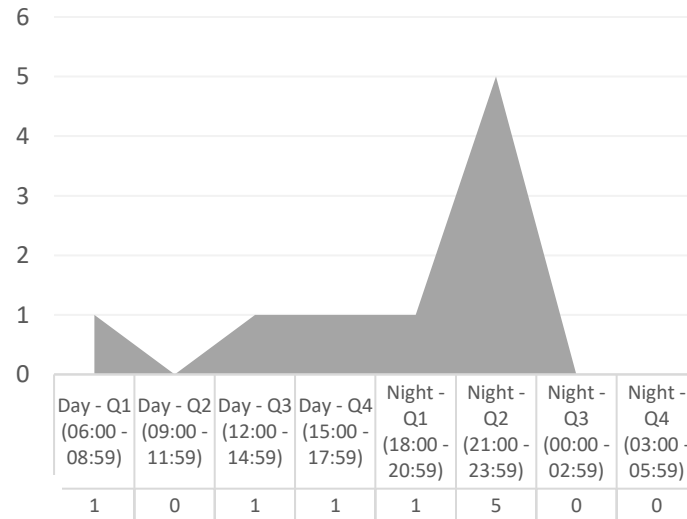
Project Incursion Rate: Length of TM data not available

Breakdown Rate: Length of TM data not available

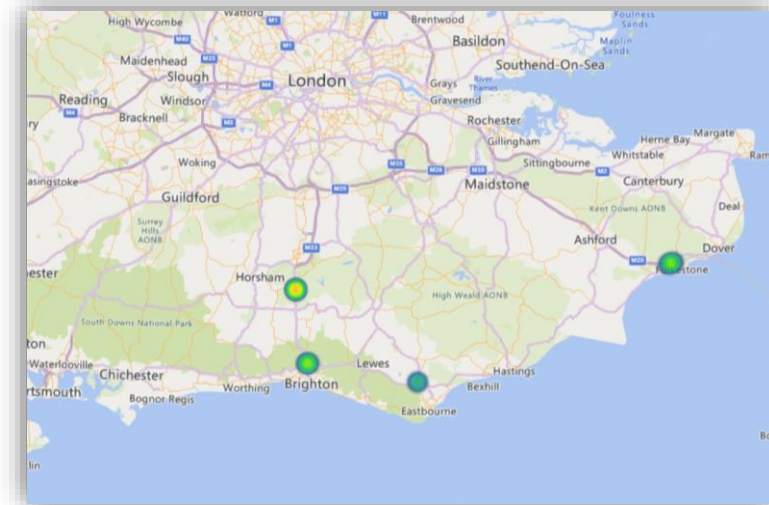
## Area 4



## Time Profile of Incursions recorded



## Heatmap





# Heatmap of Incursions recorded in September 2023

- “96% of all incursions were recorded with coordinates”

