

# IPV & Incursion Working Group Report – August 2023

Nick Nandhra

Project Manager - Major Projects Customer Service and Stakeholder Division

Rev 0 – 05/09/2023

Data Source: HART [WD2]

# Incursions Report - Headline

To date, the total number of incursions recorded since October 2017 is **14000**

Kind of Event	Directorate				
	Major Projects	Operations	Outstations & ROCs	NH Offices & Depots	Grand Total
Incursion; Intentional - To seek benefit	774	1898	566	58	3296
Incursion; Intentional – Because of breakdown	4052	358	141	2	4553
Incursion; Intentional – To seek information	53	84	29	4	170
Incursion; Intentional - Breach of Rolling Road Block (TOS)	4	22	868	8	902
Incursion; Unintentional - Driver confused	824	588	263	40	1715
Incursion; Unintentional - Follow in	138	172	16	3	329
Incursion; Unintentional - Result of accident	270	163	69	5	507
Incursions; Intentional - Blue Light Incursion	46	61	0	0	107
IPV Strike	18	57	10	0	85
Incursion to seek information or benefit	233	1085	174	18	1510
Incursion unintentional - confused or follow in	181	429	210	6	826
<b>Grand Total</b>	<b>6593</b>	<b>4917</b>	<b>2346</b>	<b>144</b>	<b>14000</b>

Kind of Event	By Year (Jan – Dec)						
	Previous Years	2018	2019	2020	2021	2022	2023
Number of All Incursions recorded	788	1874	2055 (+9.7%)	2313 (+12.6%)	3937 (+70.2%)	1808 (-54.1%)	1225

# Incursions Report - Headline

**145** Incursions were recorded for August 2023

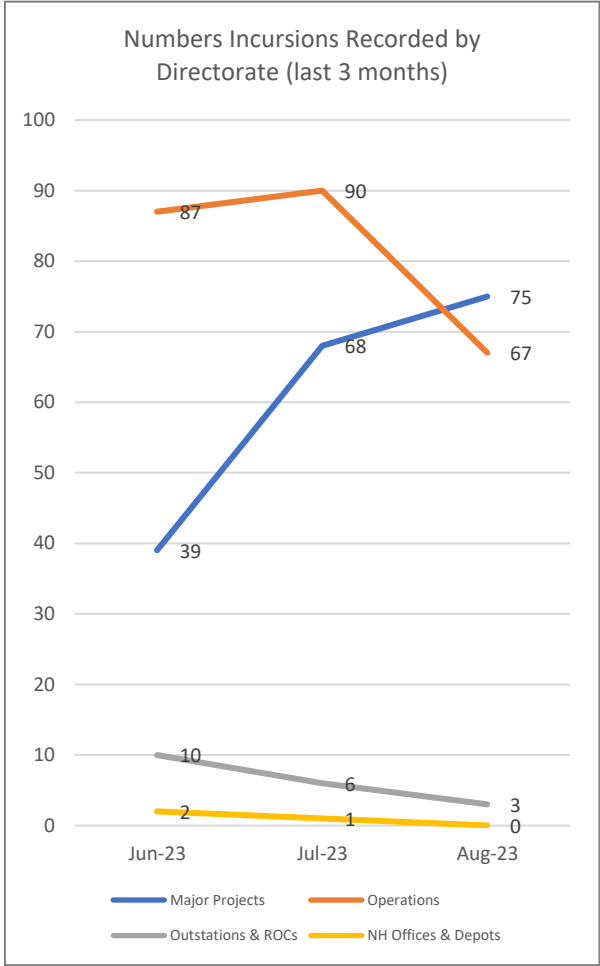
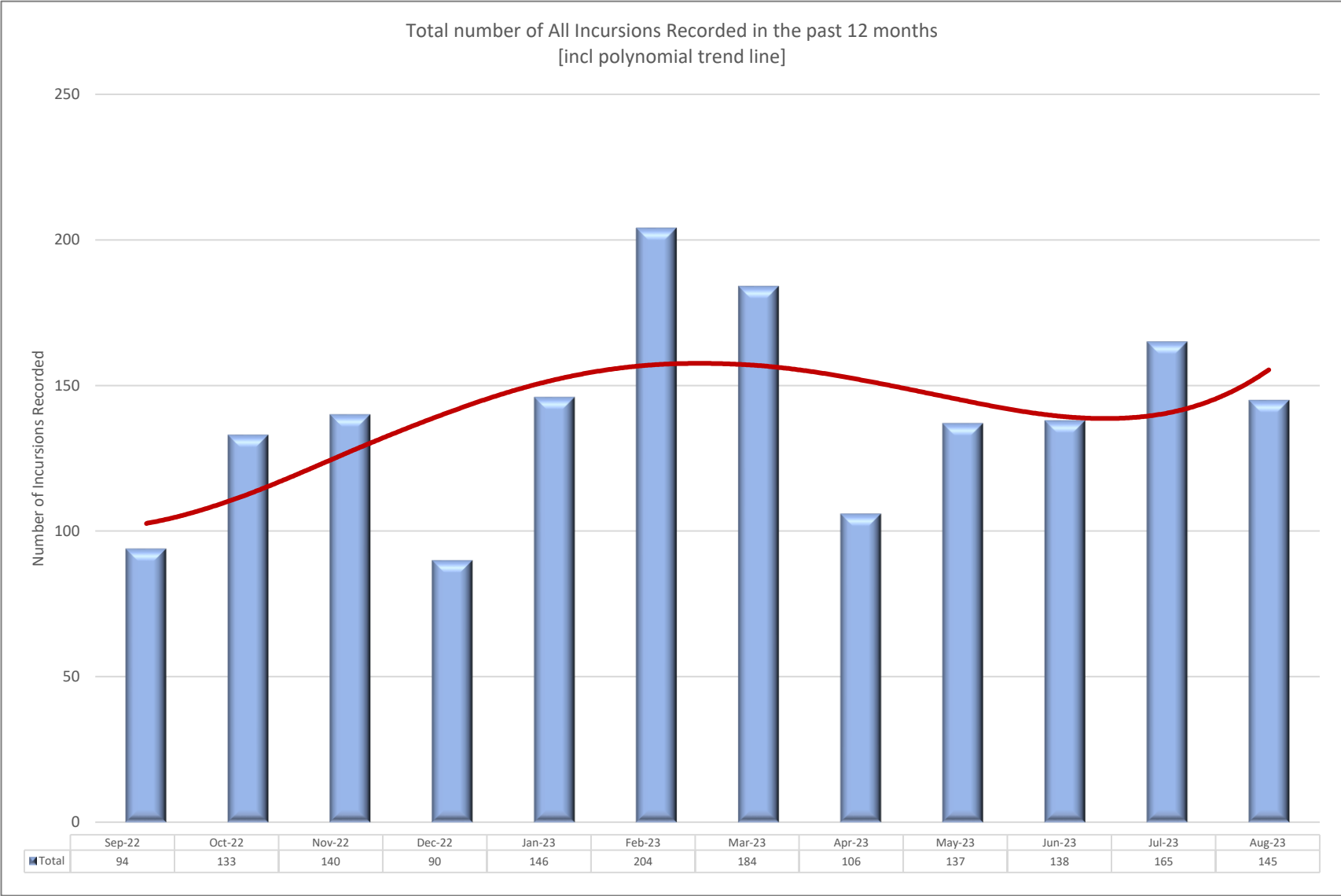
Kind of Event	Directorate				Grand Total
	Major Projects	Operations	Outstations & ROCs	NH Offices & Depots	
Incursion; Intentional - To seek benefit	27	46	2		75
Incursion; Intentional – Because of breakdown	26	11			37
Incursion; Intentional – To seek information		2			2
Incursion; Intentional - Breach of Rolling Road Block (TOS)					
Incursion; Unintentional - Driver confused	18	5			23
Incursion; Unintentional - Follow in	3	1			4
Incursion; Unintentional - Result of accident			1		1
Incursions; Intentional - Blue Light Incursion	1	2			3
IPV Strike					
<b>Grand Total</b>	<b>75</b>	<b>67</b>	<b>3</b>		<b>145</b>

# Incursions Report - Headline

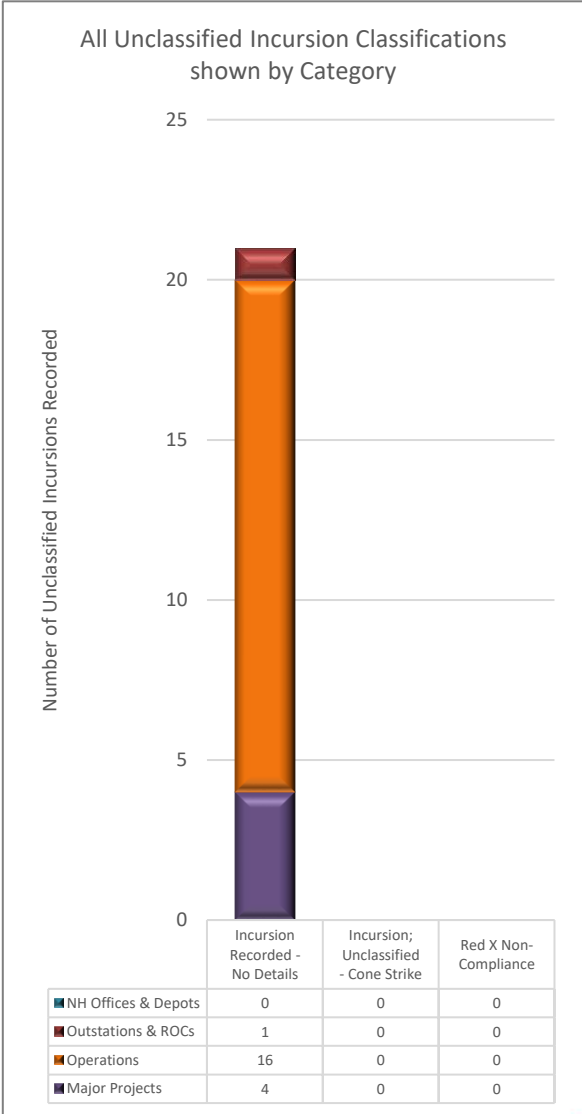
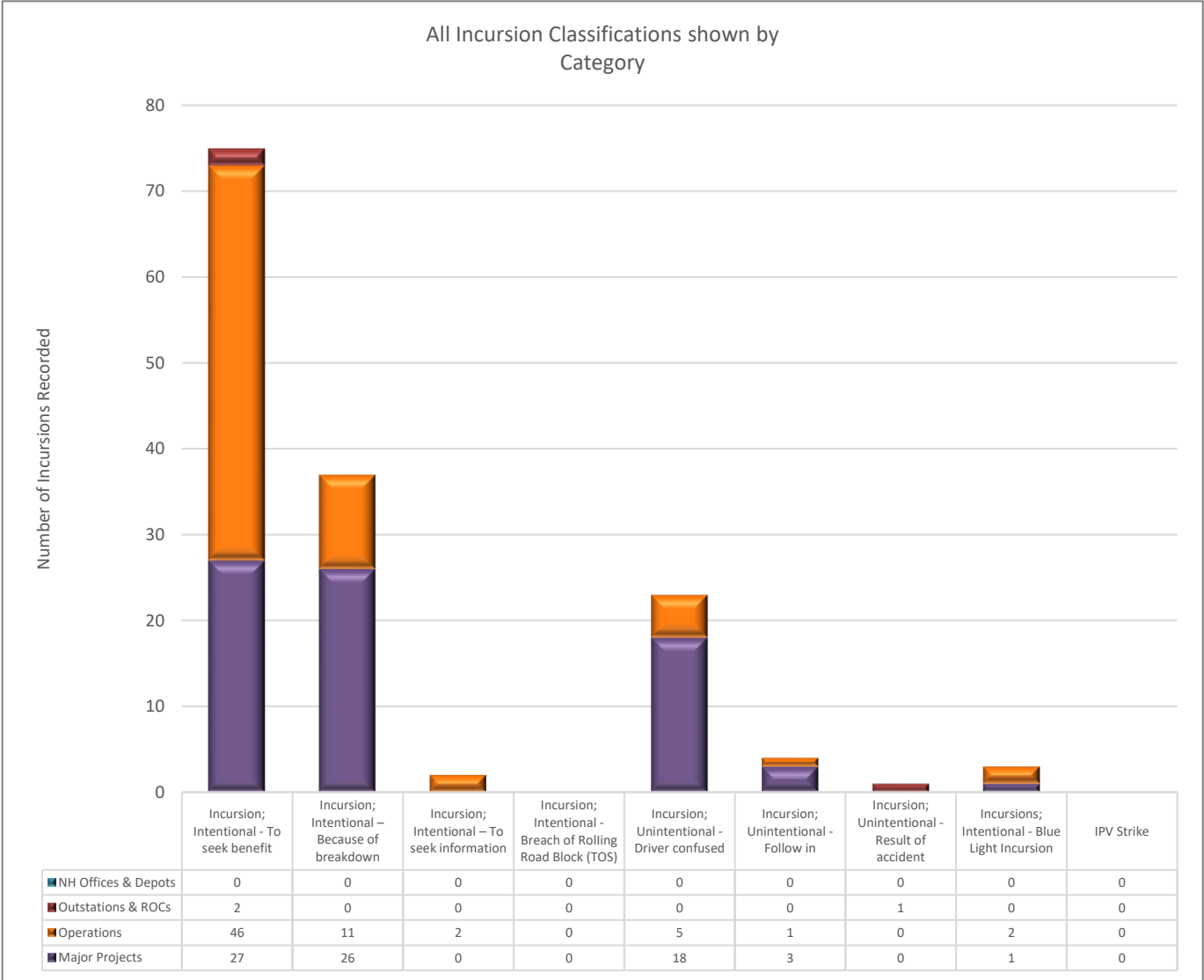
Table shows the average number of incursions recorded by directorate and type in the past 12-month period.

Incursion Category	Directorate			Comments
	Major Projects	Operations	Outstations & ROCs	
Incursion; Intentional - To seek benefit	13.25	42.17	2.58	Average incursions numbers have increased slightly from the previous month in both MP & Operations
Incursion; Intentional – To seek information	1.00	1.25	0.00	Average incursions numbers are similar to the previous month
Incursion; Intentional – Because of breakdown	26.25	4.25	0.33	‘Breakdowns’ is substantially higher in Major Projects (due to the number of long-term closures being installed)
Incursion; Intentional - Breach of Rolling Road Block (TOS)	0.08	0.00	0.50	
Incursion; Unintentional - Driver confused	12.08	12.50	1.08	Average incursions numbers are slightly higher in Operations and broadly similar to previous month
Incursion; Unintentional - Follow in	2.25	3.75	0.17	Average incursions numbers are slightly higher in Operations and broadly similar to previous month
Incursion; Unintentional - Result of accident	3.75	2.00	0.33	Average incursions numbers are slightly higher in Operations and broadly similar to previous month
IPV Strike	0.25	1.92	0.42	Average numbers for ‘IPV Strike’ is higher in Operations than in MP
Incursions; Intentional – Blue Light Incursion	3.17	4.33	0.00	Average numbers for ‘Blue Light’ incursions is higher in Operations & have increased from the previous month

# Incursions Report – All Incursions



# Incursions Report – All Incursions during August 23



Top incursions categories for this month (across all directorates):

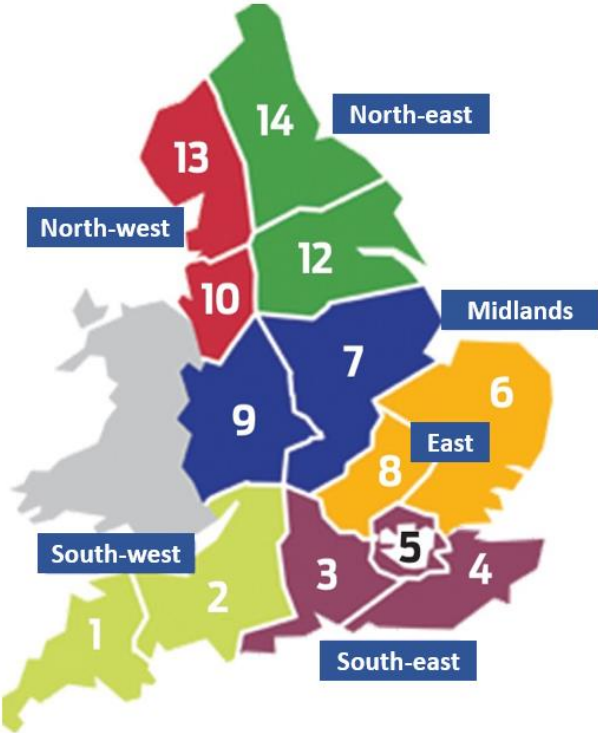
1. Incursion; Intentional - To seek benefit [75]
2. Incursion; Unintentional - Driver confused [23]
3. Incursion; Unintentional - Follow in [4]
4. Incursions; Intentional - Blue Light Incursion [3]
5. Incursion; Intentional - To seek information [2]
6. Incursion; Unintentional - Result of accident [1]
7. Incursion; Intentional - Breach of Rolling Road Block (TOS) [0]
8. IPV Strike [0]

Note - Incursion; Intentional - Because of breakdown [37]



# Incursions Report by Region & Risk

Rolling 6 Month totals of All Incursion <i>as recorded by Regions &amp; ranked in order</i>	Number of Incursions		Total
	Major Projects	Operations	
South East	59	214	273
North West	119	32	151
East	5	126	131
Yorkshire & North East	81	47	128
Midlands	57	63	120
South West	16	19	35



All Incursions (from 2017 to current)

Incursion Risk Ratings for all incursions recorded and in month



August 2023

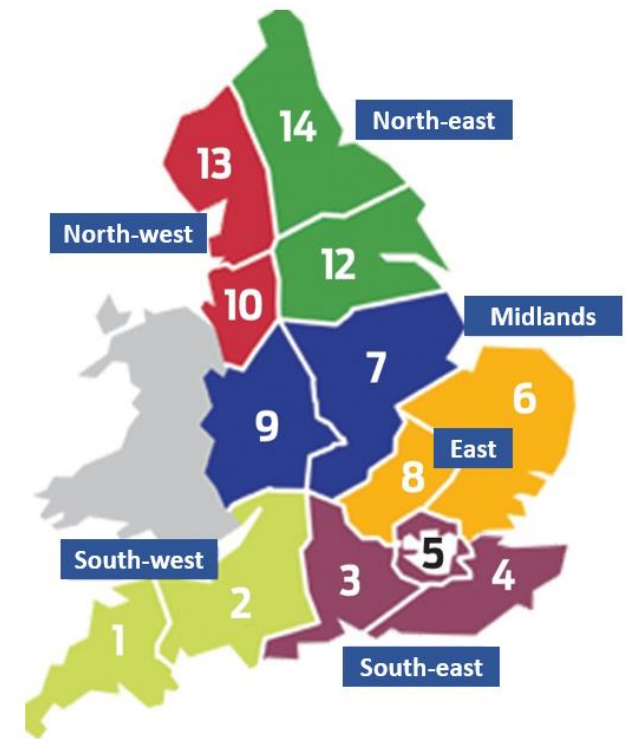


0% 10% 20% 30% 40% 50% 60% 70% 80% 90% 100%

Low Medium High

# Incursions Report by Region & Category

Rolling 6 Month totals of All Incursion <i>as recorded by Regions &amp; ranked in order</i>	Number of Incursions		Total
	Major Projects	Operations	
South East	59	214	273
North West	119	32	151
East	5	126	131
Yorkshire & North East	81	47	128
Midlands	57	63	120
South West	16	19	35



In Month Incursion Figures by Region and by Incursion Type	Incursion Categories																			Totals		
	Seek Benefit		Seek Information		Breach of Rolling Roadblock (TOS)		Driver confused		Follow-In		Result of accident		IPV Strike		Blue Light Incursion		Because of Breakdown					
	MP	Ops	MP	Ops	MP	Ops	MP	Ops	MP	Ops	MP	Ops	MP	Ops	MP	Ops	MP	Ops	MP	Ops	MP	Ops
Midlands	6	11	0	0	0	0	5	1	1	0	0	0	0	0	0	0	0	17	3	29	15	44
South East	4	16	0	2	0	0	3	1	0	1	0	0	0	0	0	0	0	0	3	7	23	30
Yorkshire & North East	9	4	0	0	0	0	6	0	0	0	0	0	0	0	1	0	3	0	19	4	23	
East	0	11	0	0	0	0	0	3	0	0	0	0	0	0	0	2	0	5	0	21	21	
North West	8	1	0	0	0	0	3	0	1	0	0	0	0	0	0	0	5	0	17	1	18	
South West	0	3	0	0	0	0	1	0	1	0	0	0	0	0	0	0	1	0	3	3	6	



# Blue Light Incursions Report - Headline

**107** Blue Light Incursions have been recorded since February 2022 with **3** being recorded in August 2023 (Edited Record)

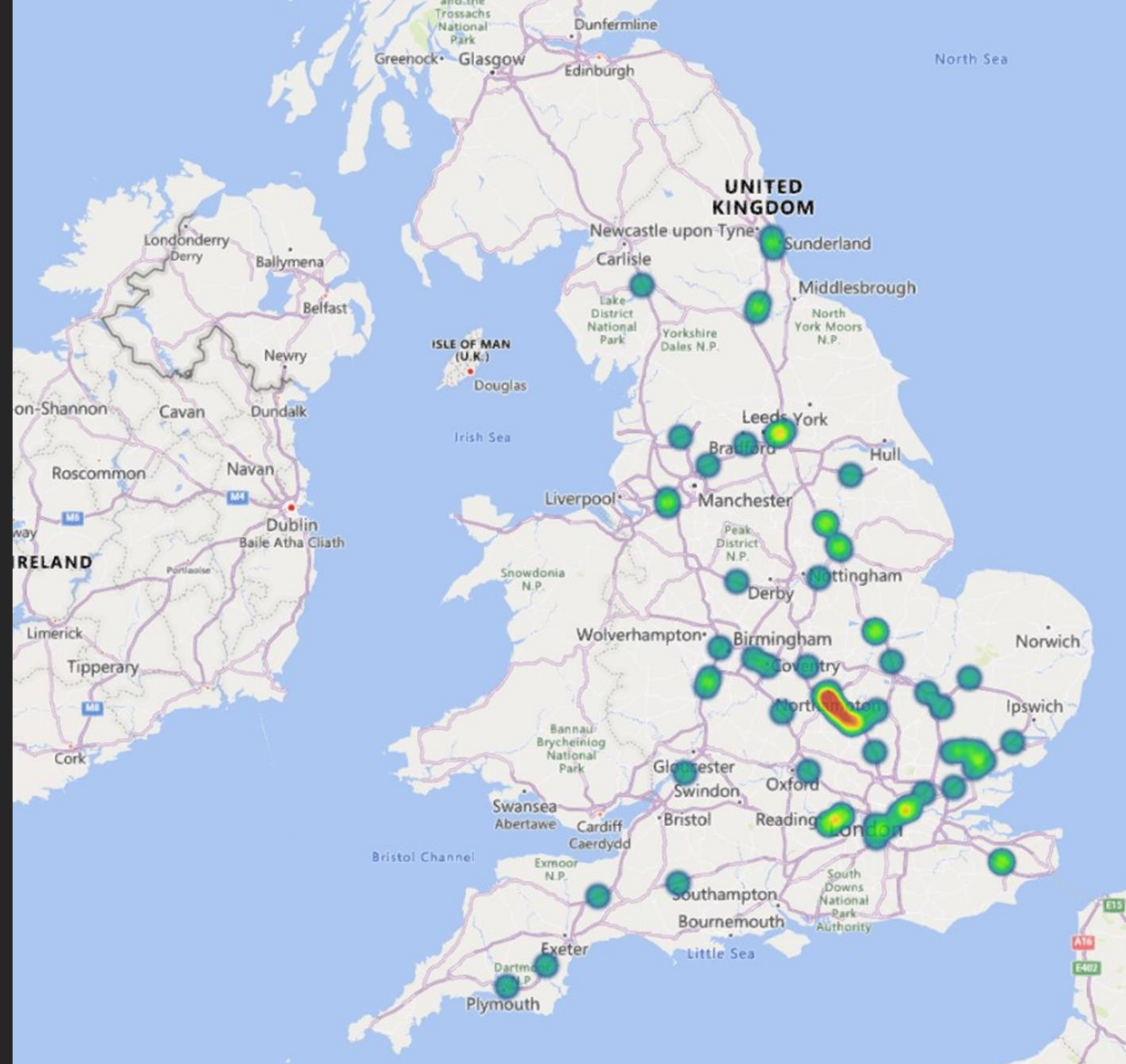
Record ID	Date	Time	Directorate	Region	Programme	Site / Project	Type of Closure	Type of TTM	Location	Specific Location	Details of actual job being done	Describe the facts of what happened	Immediate Actions Taken
144568	09/08/2023	22:22:00	Major Projects	Yorkshire & North East - Major Projects	Yorkshire & North East - SMP	MP-0672 - Places of Relative Safety Retrofit	Not populated	Not populated	Not populated	Not populated	Survey works in the verge	A police car with its blue lights entered the works area travelling at speed	Not Populated
144667	13/08/2023	11:50:00	Operations	East - Operations	East - Area Contracts	Area 6 & 8	Lane Closure - Mainline	Standard works – Narrow Lane system inc. slips and links	Carriageway A	A11 Spooner Row and Tuttlers Lane N/A	Reinstatement of crossovers	Ambulance driving through the lane closure at Speed	Reported to TM manager, TM manager has supplied information to emergency services.
144672	14/08/2023	10:30:00	Operations	East - Operations	East - Area Contracts	Area 6 & 8	Lane Closure - Mainline	Standard works – Narrow Lane system inc. slips and links	Carriageway B	A11 Tuttlers lane and Spooner Row N/A	N/A	Ambulance enter lane 2 of closure	Reported to TM manager, TM manager reported it to ambulance service and site team



Heatmap of  
IPV Strikes  
recorded  
during August  
23



# Heatmap of all IPV Strikes recorded



# Incursions Report

Directorate: Major Projects

Region: North West

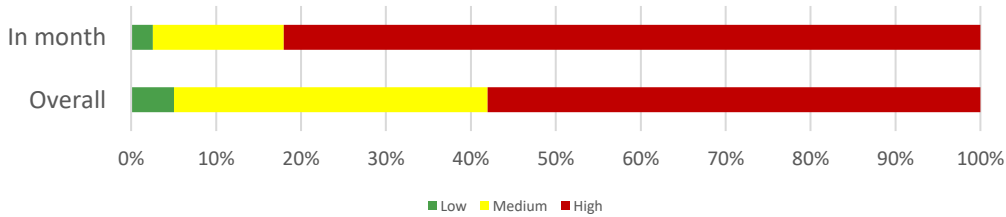
3 Month Incursion analysis

- MP-0164 - M6 J21A to 26 - SMA a total of 12 incursions have been recorded; with a 100% increase in 'Seeking Benefit' type incursions together with a no change from the previous month in 'Driver confused' no change from the previous month in 'Follow in' type incursions
- Bottom left – Project Risk Rating with 'In-month' rating being worse than the 'Overall' rating & incursion rate per length of TM
- Bottom middle – Time profile for 'Seeking Benefit' incursion types
- Bottom right – localised heatmap of 'Seeking Benefit'

Type of Roadworks: Full & Lane Closures (Mainline & Slip)

Type of TTM: Not Populated / Relaxed works (Lane & slip & links closures)

## Project Risk Rating

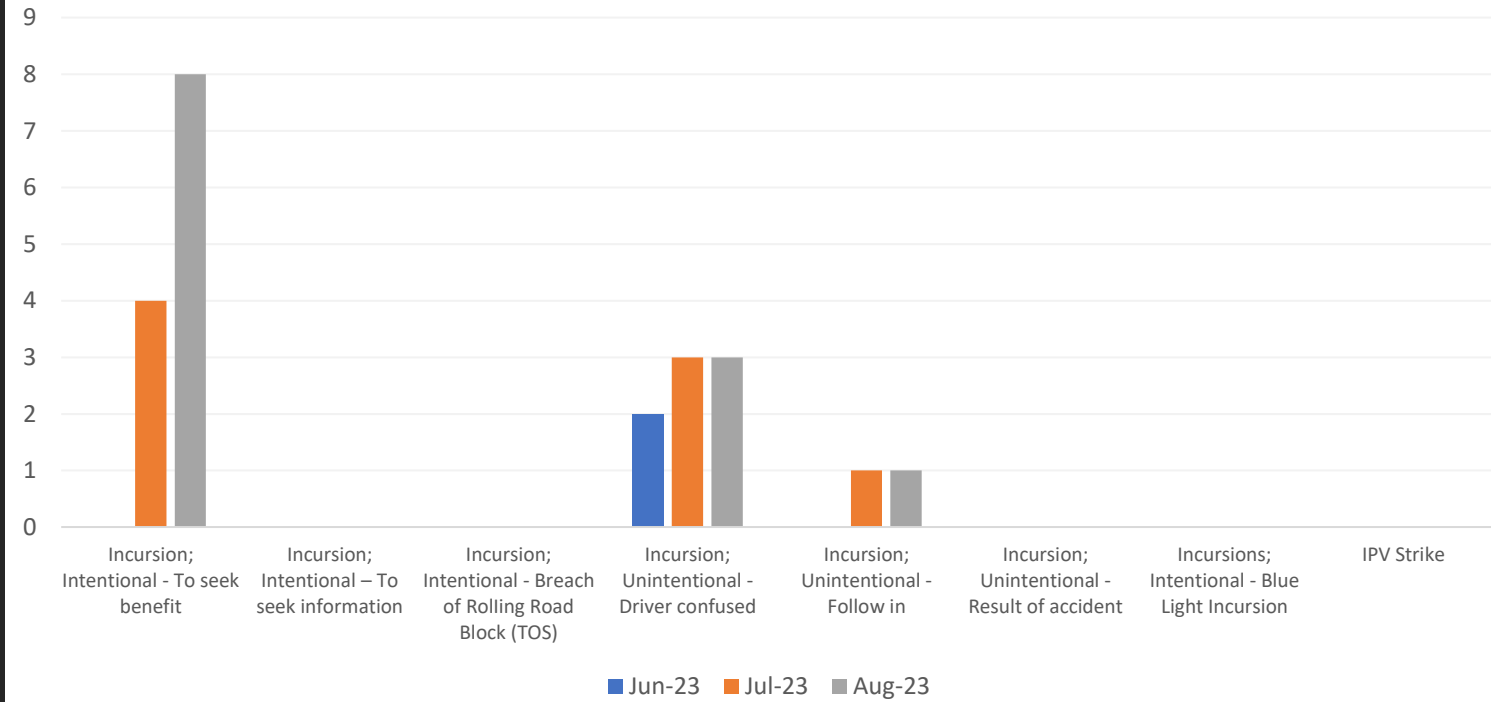


## Incursion rate per length of TM (35.00 km)

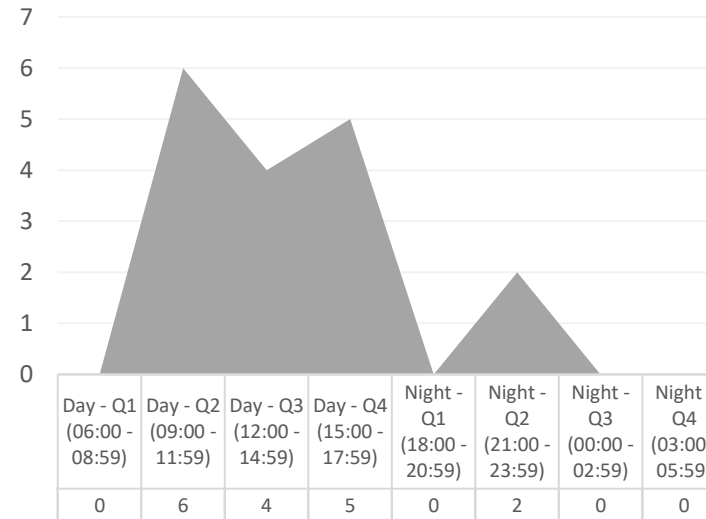
Project Incursion Rate: 4.94 incursions/km or 7.95 incursions/miles

Breakdown Rate: 1.60 incidents/km or 2.57 incidents/miles

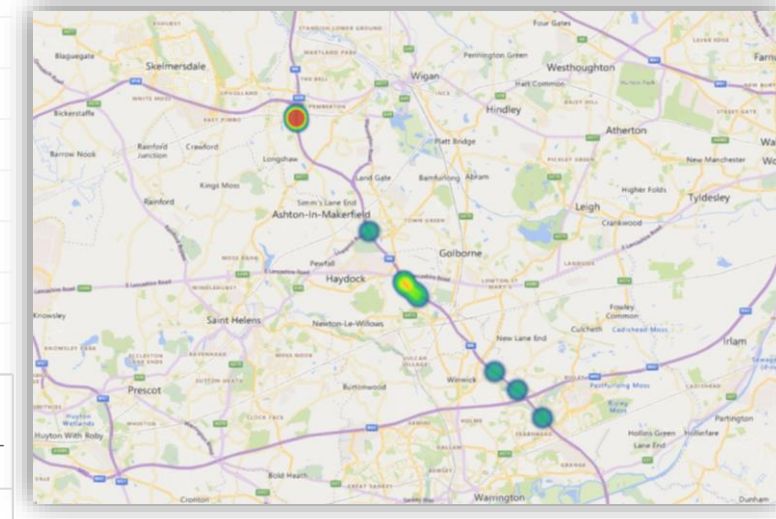
## MP-0164 - M6 J21A to 26 - SMA



## Time Profile of Incursions recorded



## Heatmap



# Incursions Report

Directorate: Major Projects

Region: Midlands

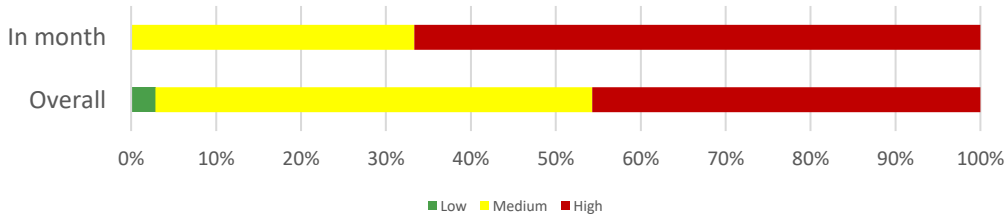
3 Month Incursion analysis

- MP-0152 - M1 J32-35a a total of 8 incursions have been recorded; with a 400% increase in 'Seeking Benefit' type incursions together with a 20% decrease in 'Driver confused' type incursions
- Bottom left – Project Risk Rating with 'In-month' rating being worse than the 'Overall' rating & incursion rate per length of TM
- Bottom middle – Time profile for 'Seeking Benefit' incursion types
- Bottom right – localised heatmap of 'Seeking Benefit'

Type of Roadworks: Full & Lane Closures (Mainline & Slip)

Type of TTM: Not Populated / Relaxed works (Lane & slip & links closures)

## Project Risk Rating

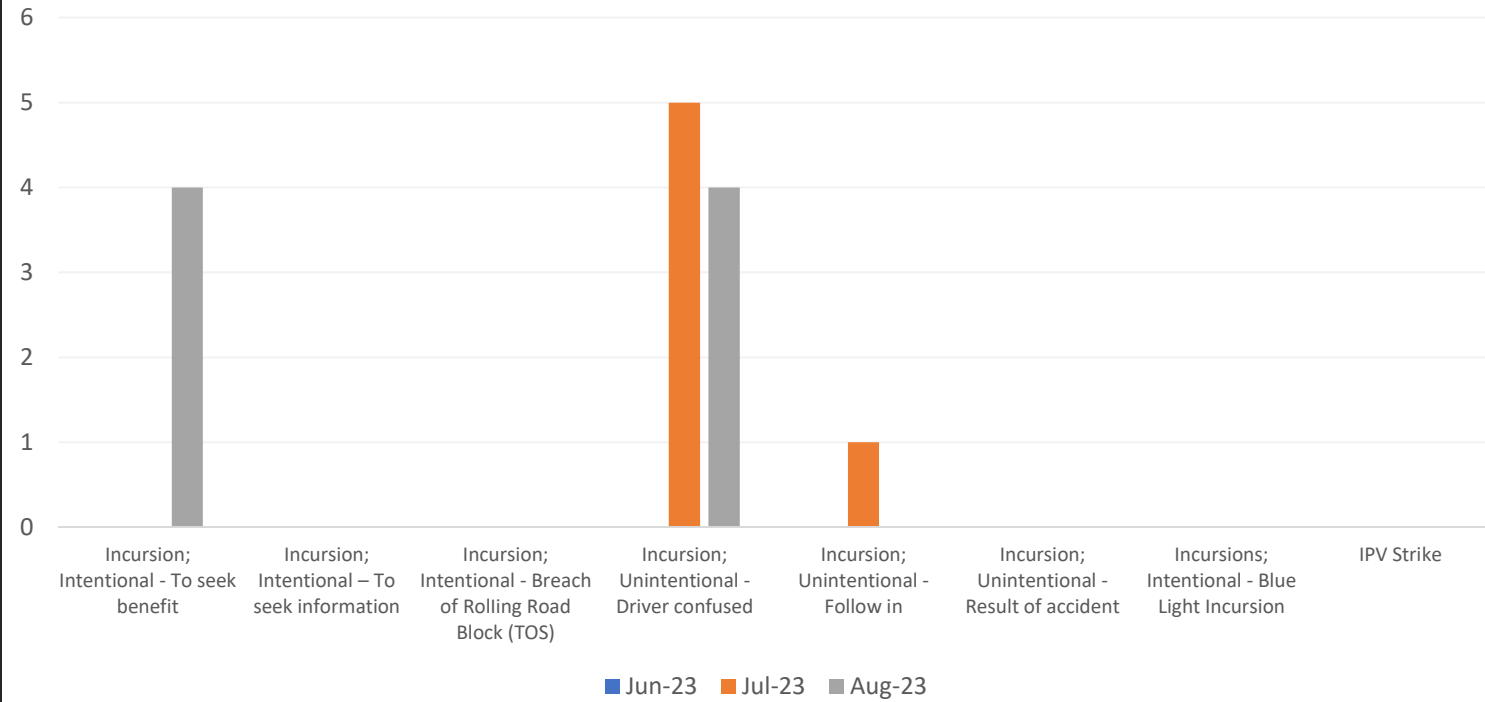


## Incursion rate per length of TM (Unknown)

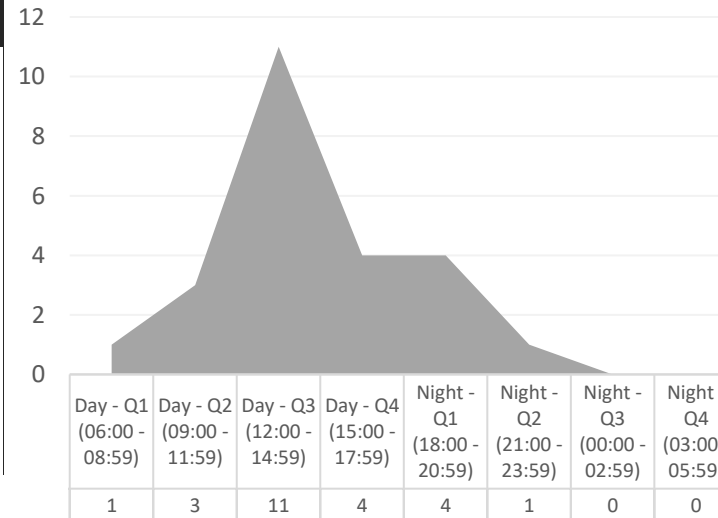
Project Incursion Rate: Length of TM data not available

Breakdown Rate: Length of TM data not available

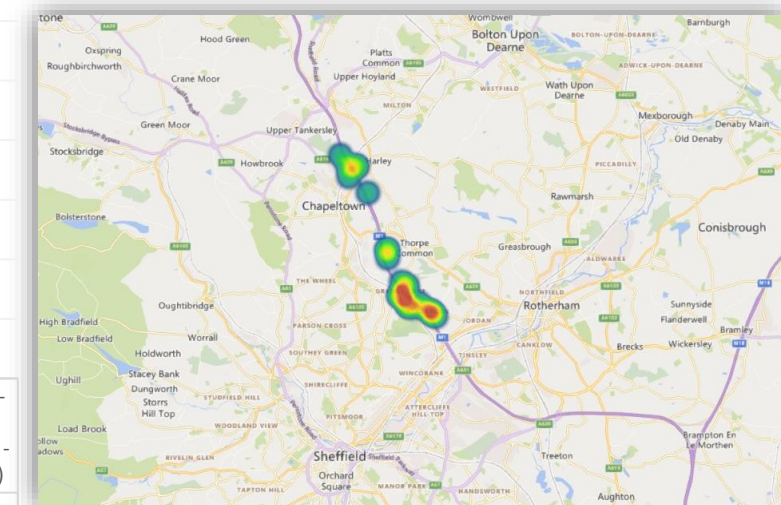
## MP-0152 - M1 J32-35a



## Time Profile of Incursions recorded



## Heatmap



# Incursions Report

Directorate: Major Projects

Region: Yorkshire & North East

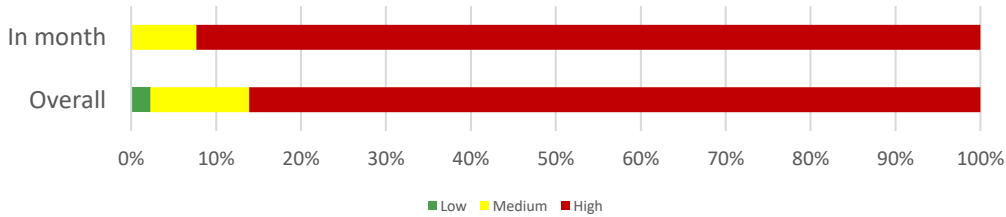
3 Month Incursion analysis

- MP-0214 - M621 Junction 1-7 Improvements - RDP a total of 7 incursions have been recorded; with a 100% increase in 'Driver confused' type incursions together with a 20% increase in 'Seeking Benefit' type incursions
- Bottom left – Project Risk Rating with 'In-month' rating being worse than the 'Overall' rating & incursion rate per length of TM
- Bottom middle – Time profile for 'Seeking Benefit' incursion types
- Bottom right – localised heatmap of 'Seeking Benefit'

Type of Roadworks: Full & Lane Closures (Mainline & Slip)

Type of TTM: Not Populated / Relaxed works (Lane & slip & links closures)

## Project Risk Rating

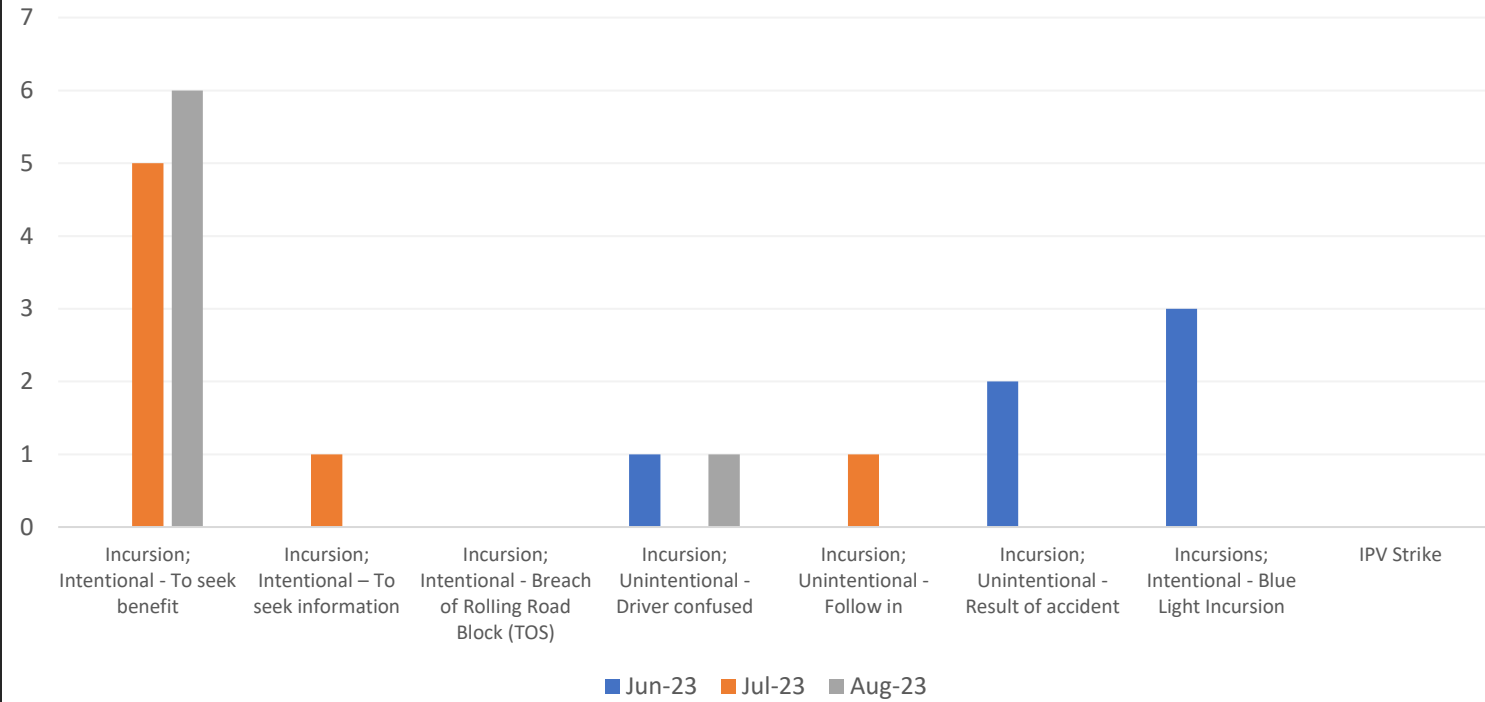


## Incursion rate per length of TM (4.80 km)

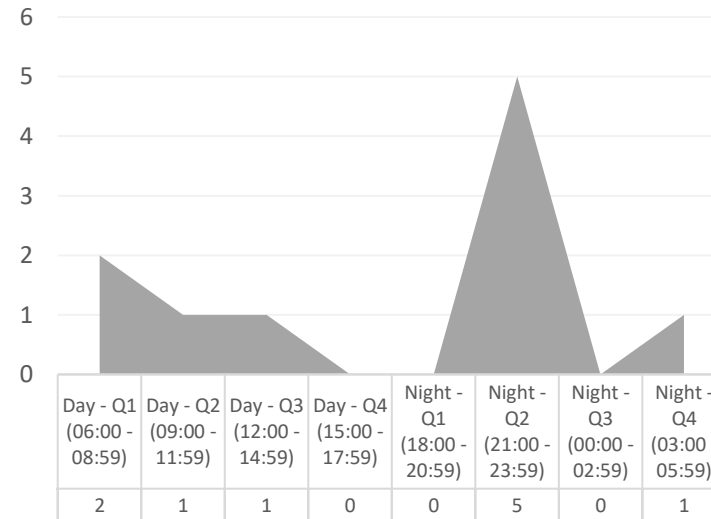
Project Incursion Rate: 13.75 incursions/km or 22.12 incursions/miles

Breakdown Rate: 9.38 incidents/km or 15.08 incidents/miles

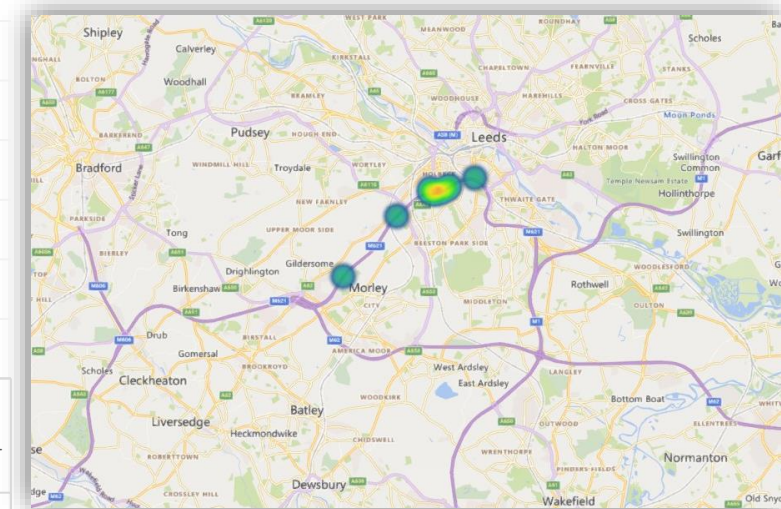
## MP-0214 - M621 Junction 1-7 Improvements - RDP



## Time Profile of Incursions recorded



## Heatmap



# Incursions Report

Directorate: Operations

Region: East

3 Month Incursion analysis

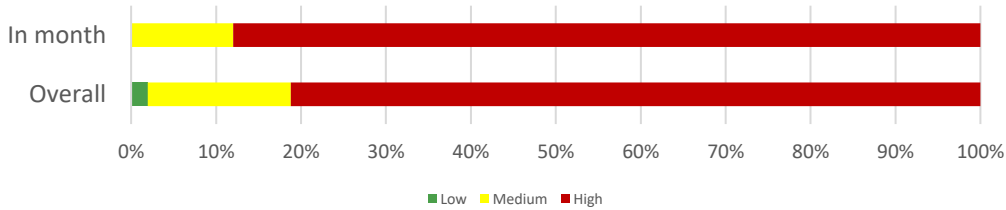
- Area 6 & 8 a total of 14 incursions have been recorded; with a 350% increase in 'Seeking Benefit' type incursions together with a no change from the previous month in Blue Light' 25% decrease in 'Driver confused' type
- Bottom left – Area Incursion Risk Rating with 'In-month' rating worse than 'Overall' rating
- Bottom middle – Time profile for 'all' incursion types recorded
- Bottom right – localised heatmap of 'all' incursion types recorded

Type of Roadworks: Not Populated / Lane Closures (mainline)

Type of TTM: Not Populated / Hard shoulder closures

\* Excluding Breakdown type incursions

## Area Incursion Risk Rating

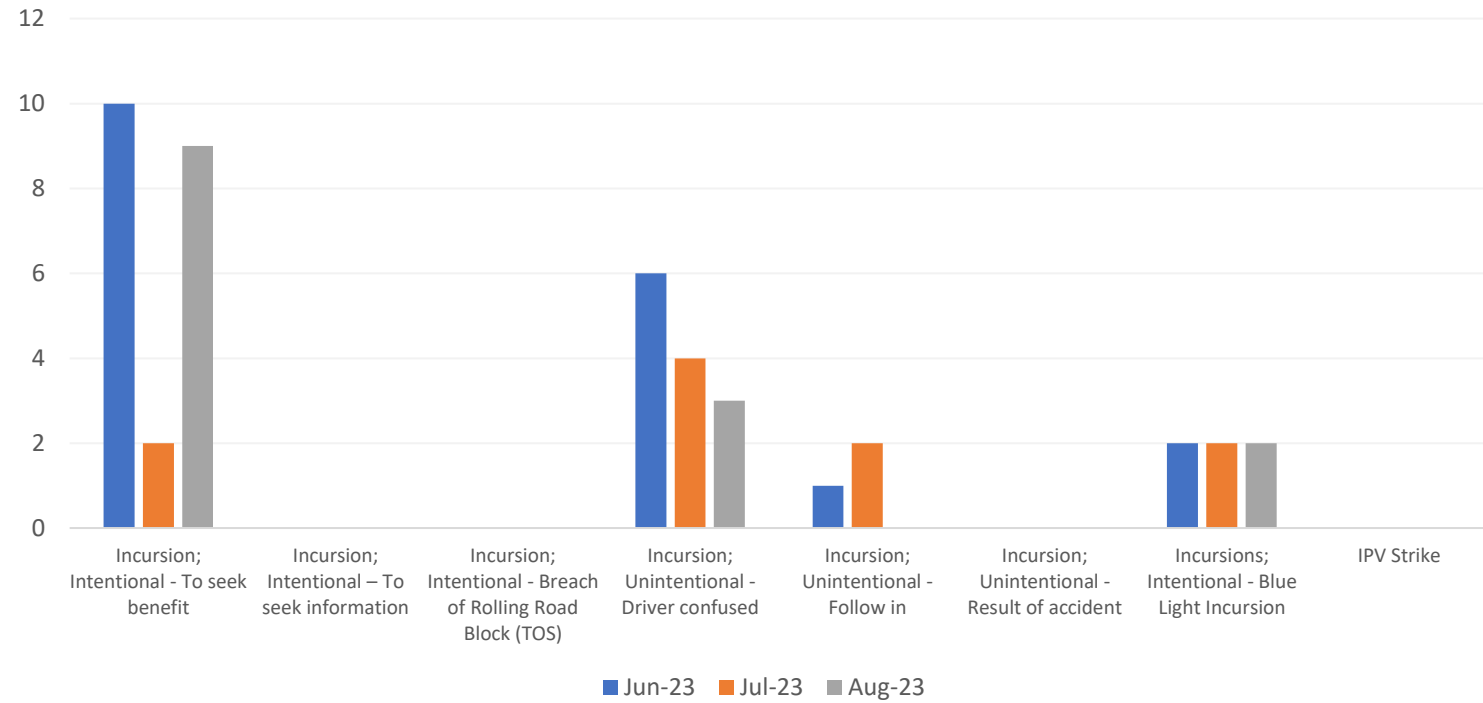


## Incursion rate per length of TM (Unknown)

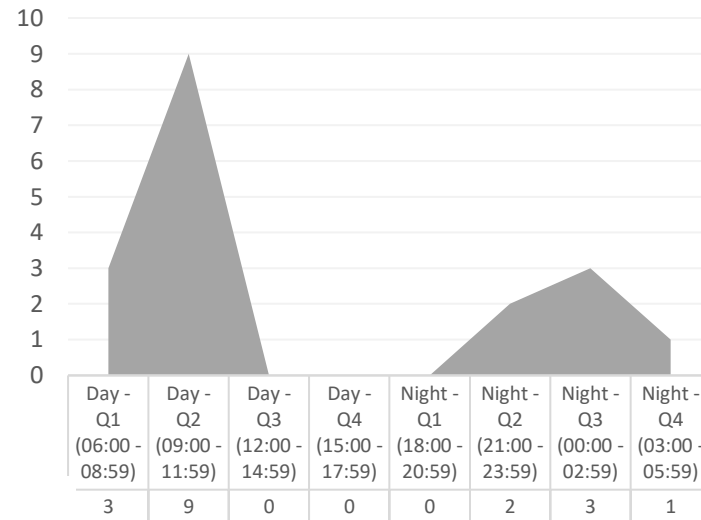
Project Incursion Rate: Length of TM data not available

Breakdown Rate: Length of TM data not available

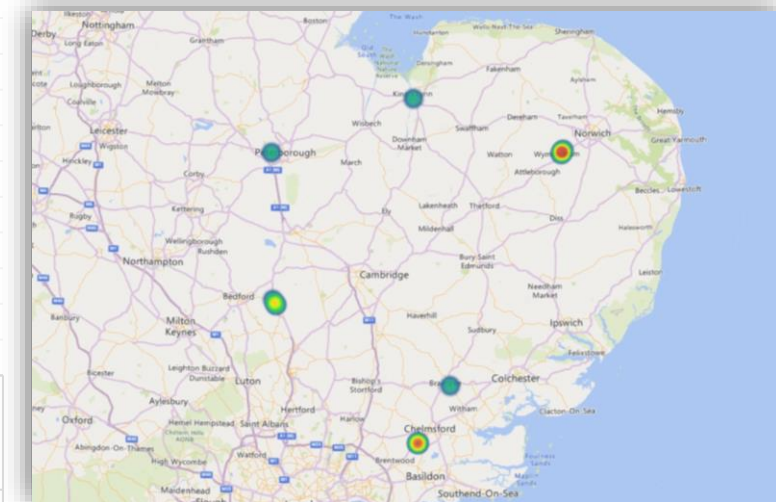
## Area 6 & 8



## Time Profile of Incursions recorded



## Heatmap





# Incursions Report

Directorate: Operations  
Region: South East

3 Month Incursion analysis

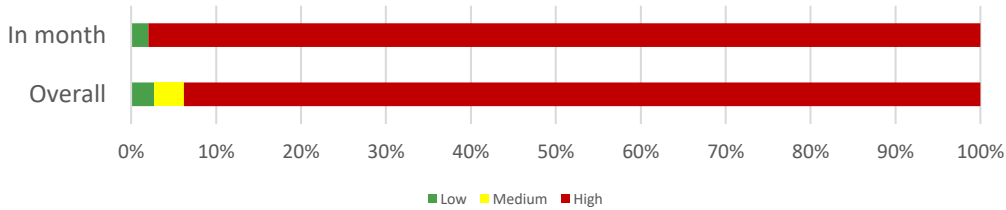
- DBFO - M25 (Area 5) a total of 13 incursions have been recorded; with a no change from the previous month in Seeking Benefit' type incursions together with a no change from the previous month in To seek information' type incursions
- Bottom left – Area Incursion Risk Rating with 'In-month' rating being worse than the 'Overall' rating
- Bottom middle – Time profile for 'all' incursion types
- Bottom right – localised heatmap 'all' incursion types

Type of Roadworks: Not Populated / Lane Closures (mainline)

Type of TTM: Not Populated / Hard shoulder closures

\* Excluding Breakdown type incursions

## Area Incursion Risk Rating

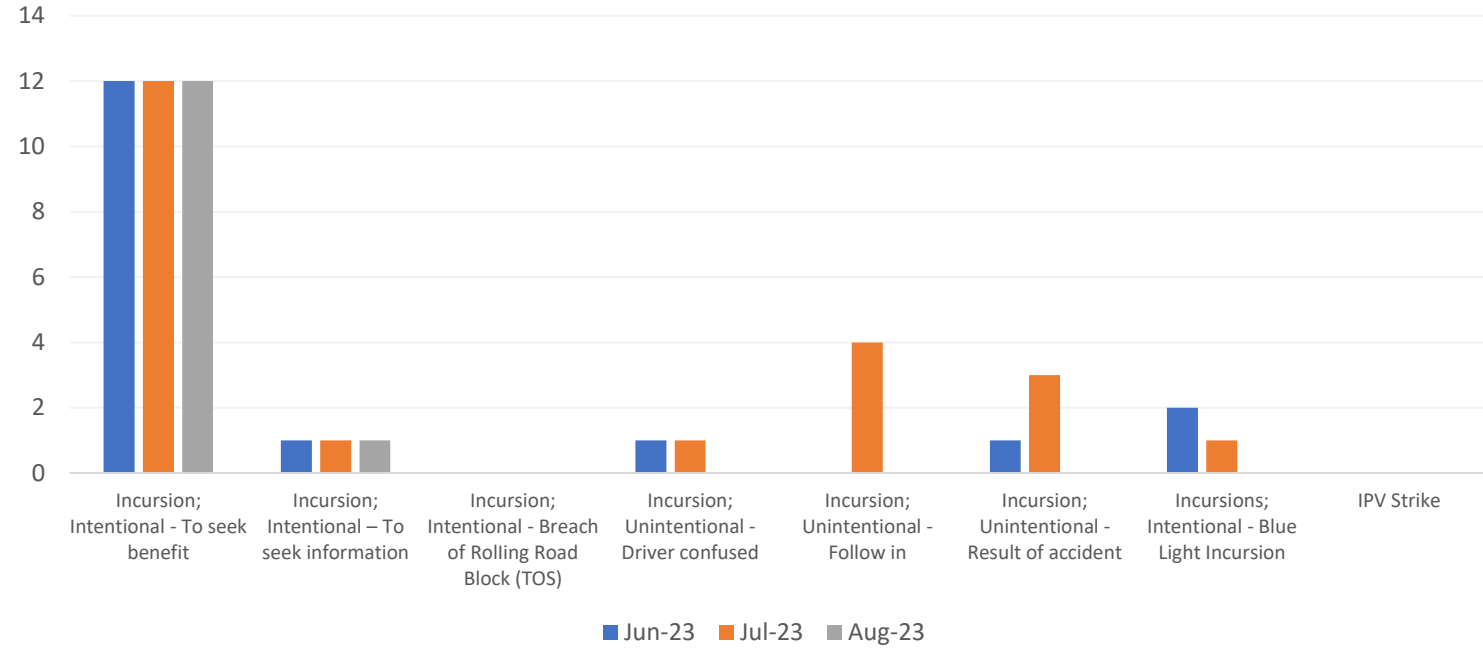


## Incursion rate per length of TM (Unknown)

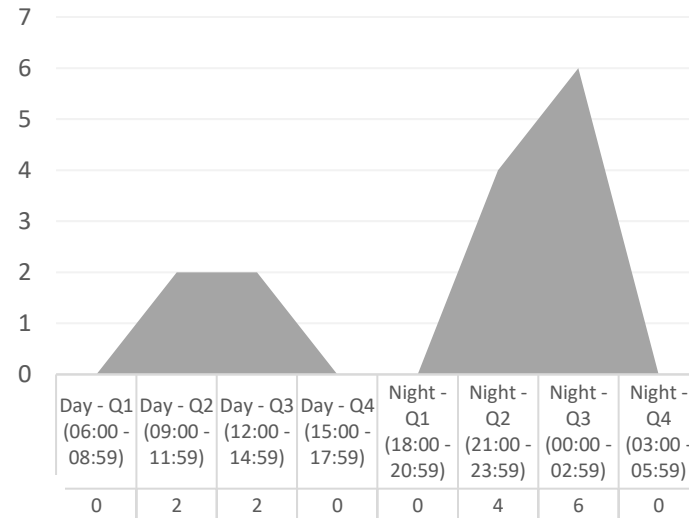
Project Incursion Rate: Length of TM data not available

Breakdown Rate: Length of TM data not available

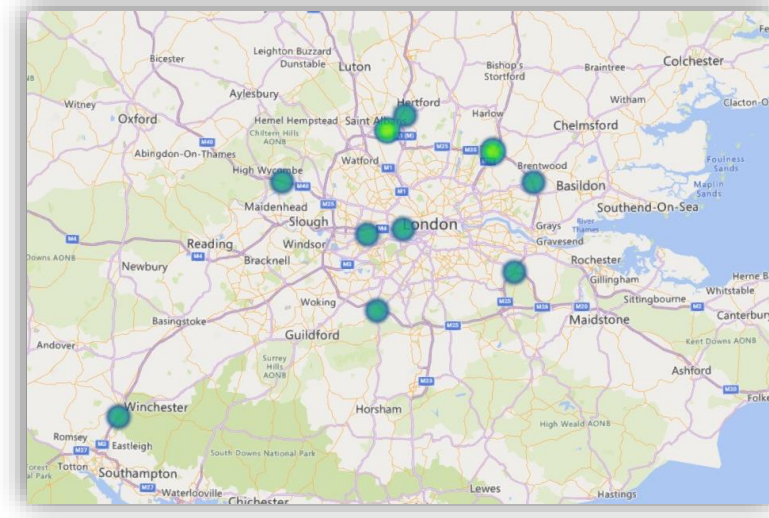
## Area 5



## Time Profile of Incursions recorded



## Heatmap



# Incursions Report

Directorate: Operations

Region: Midlands

3 Month Incursion analysis

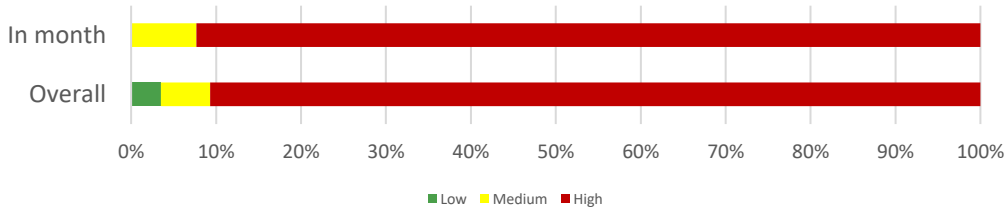
- AD - M&R - Seven a total of 7 incursions have been recorded; with a 100% increase in 'Seeking Benefit' type incursions together with a 100% increase in 'Driver confused' type incursions
- Bottom left – Area Incursion Risk Rating with 'In-month' rating worse than 'Overall' rating
- Bottom middle – Time profile for 'all' incursion types recorded
- Bottom right – localised heatmap of 'all' incursion types recorded

Type of Roadworks: Not Populated / Lane Closures (mainline)

Type of TTM: Not Populated / Hard shoulder closures

\* Excluding Breakdown type incursions

## Area Incursion Risk Rating

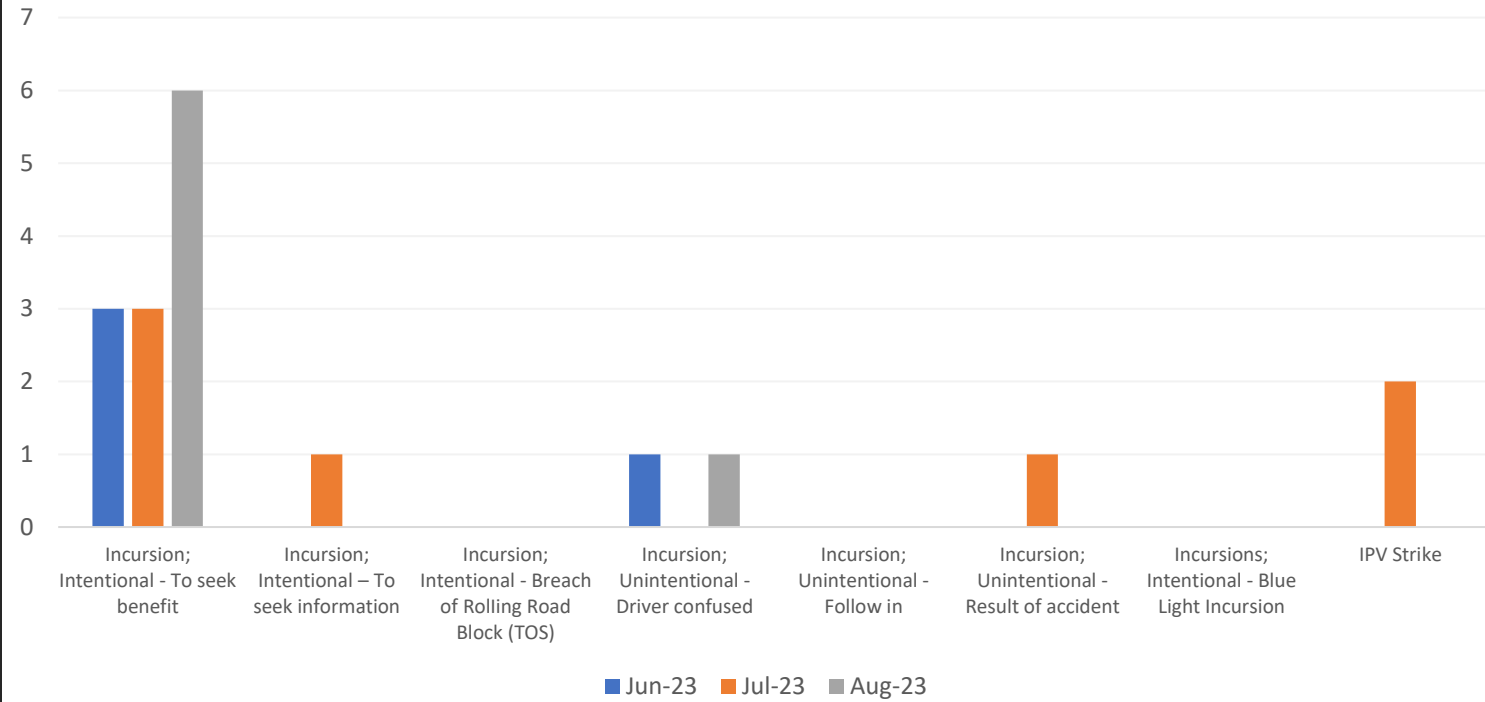


## Incursion rate per length of TM (Unknown)

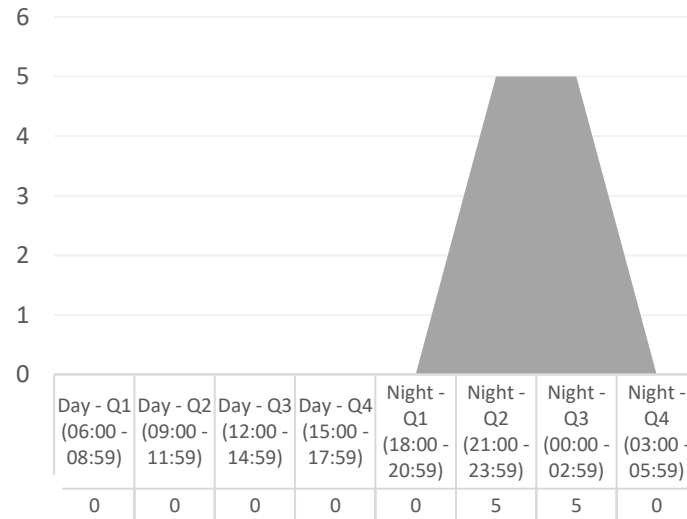
Project Incursion Rate: Length of TM data not available

Breakdown Rate: Length of TM data not available

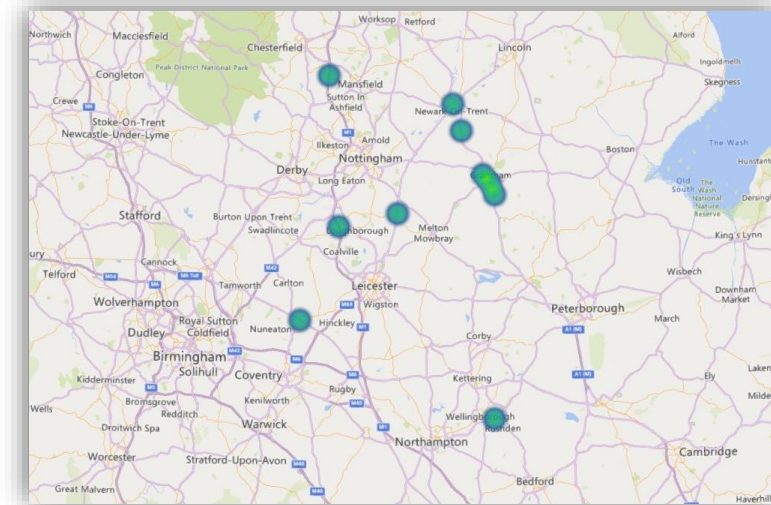
## AD - M&R - Seven



## Time Profile of Incursions recorded

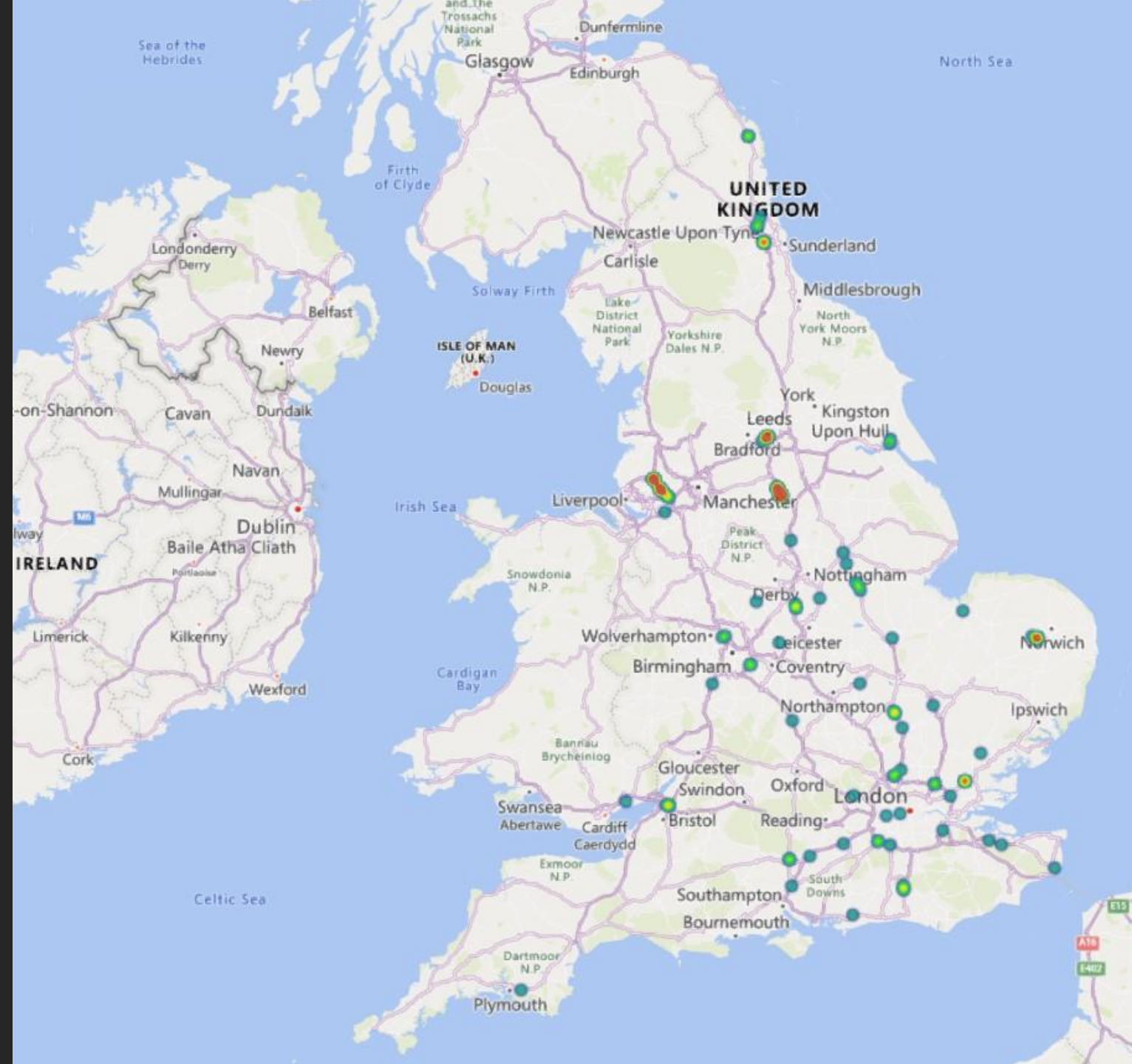


## Heatmap



# Heatmap of Incursions recorded in August 2023

- “94% of all incursions were recorded with coordinates”



# Heatmap of all Incursions recorded (for the past 12 months)



# Good News & Practices

- MP-0273 - M25 J10/A3 Wisley Interchange – meeting held with project team in June 23 to discuss recent incursions and to share good practices from other projects
- MSI – CRF A12 J13 – J15 Margaretting – meeting held in August 23 with project team to review approach to TM and actions taken to reduce incursions