

IPV & Incursion Working Group Report – April 2023

Nick Nandhra

Project Manager - Major Projects Customer Service and Stakeholder Division

Rev 0 – 04/05/2023

Data Source: HART [WD3]

Incursions Report - Headline

To date, the total number of incursions recorded since October 2017 is **13424**

Kind of Event	Directorate				
	Major Projects	Operations	Outstations & ROCs	NH Offices & Depots	Grand Total
Incursion; Intentional - To seek benefit	809	1736	557	57	3159
Incursion; Intentional – Because of breakdown	3879	337	139	2	4357
Incursion; Intentional – To seek information	51	75	29	4	159
Incursion; Intentional - Breach of Rolling Road Block (TOS)	4	22	865	8	899
Incursion; Unintentional - Driver confused	770	530	260	39	1599
Incursion; Unintentional - Follow in	127	151	16	2	296
Incursion; Unintentional - Result of accident	251	151	68	5	475
Incursions; Intentional - Blue Light Incursion	31	39	0	0	70
IPV Strike	18	48	8	0	74
Incursion to seek information or benefit	233	1085	174	18	1510
Incursion unintentional - confused or follow in	181	429	210	6	826
Grand Total	6354	4603	2326	141	13424

Kind of Event	By Year (Jan – Dec)						
	Previous Years	2018	2019	2020	2021	2022	2023
Number of All Incursions recorded	788	1874	2055 (+9.7%)	2313 (+12.6%)	3937 (+70.2%)	1806 (-54.1%)	652

Incursions Report - Headline

6 Historical Incursion records added

Kind of Event	Directorate														
	Major Projects			Operations			Outstations & ROCs			NH Offices & Depots			Grand Total		
	Jan-23	Feb-23	Mar-23	Jan-23	Feb-23	Mar-23	Jan-23	Feb-23	Mar-23	Jan-23	Feb-23	Mar-23	Jan-23	Feb-23	Mar-23
Incursion; Intentional - To seek benefit						3									3
Incursion; Intentional – Because of breakdown			1												1
Incursion; Intentional – To seek information															
Incursion; Intentional - Breach of Rolling Road Block (TOS)															
Incursion; Unintentional - Driver confused						2									2
Incursion; Unintentional - Follow in															
Incursion; Unintentional - Result of accident															
Incursions; Intentional - Blue Light Incursion															
IPV Strike															
Grand Total		1			5									6	

Incursions Report - Headline

112 Incursions were recorded for April 2023

Kind of Event	Directorate				Grand Total
	Major Projects	Operations	Outstations & ROCs	NH Offices & Depots	
Incursion; Intentional - To seek benefit	12	51	3	1	67
Incursion; Intentional – Because of breakdown	6	1	1		8
Incursion; Intentional – To seek information	3				3
Incursion; Intentional - Breach of Rolling Road Block (TOS)					
Incursion; Unintentional - Driver confused	7	8	2		17
Incursion; Unintentional - Follow in	1	2			3
Incursion; Unintentional - Result of accident	9		1		10
Incursions; Intentional - Blue Light Incursion		3			3
IPV Strike		1			1
Grand Total	38	66	7	1	112

Blue Light Incursions Report - Headline

70 Blue Light Incursions have been recorded since February 2022 with **3** being recorded in April 2023 (Edited Record)

Record ID	Date	Time	Directorate	Region	Programme	Site / Project	Type of Closure	Type of TTM	Location	Specific Location	Details of actual job being done	Describe the facts of what happened	Immediate Actions Taken
140861	06/04/2023	16:48:00	Operations	East - Operations	East - Area Contracts	Area 6 & 8	Lane Closure - Mainline	Not populated	Carriageway B	A14 J47 158/2	Concrete Roads Cross-over construction	An ambulance blue lighting has been spotted driving through a closed lane to avoid queuing in traffic.	Review with Senior Management Team and Chevron. Dialogue to continue with the emergency services to raise awareness.
140986	05/04/2023	23:15:00	Operations	South East - Operations	South East - DBFO	DBFO - M25 (Area 5)	Not populated	Not populated	Not populated	Not populated	Road closure	Had a report of a incursion on the M1B to M25 A shut down a unit marked police car had driven at high speed through the closure	asked the supervisor to DWB and report it as CDTM had the CCTV incursion camera and had there reg and make of car I also reported it to my line manager

Blue Light Incursions Report - Headline

70 Blue Light Incursions have been recorded since February 2022 with **3** being recorded in April 2023 (Edited Record)

Record ID	Date	Time	Directorate	Region	Programme	Site / Project	Type of Closure	Type of TTM	Location	Specific Location	Details of actual job being done	Describe the facts of what happened	Immediate Actions Taken
141036	04/04/2023	12:30:00	Operations	South East - Operations	South East - DBFO	DBFO - M25 (Area 5)	Not populated	Not populated	Not populated	Not populated	Road closure	<p>Whilst the JCE foreman was walking back to the site compound from the Westbound gated entrance; he noticed a police car enter the closure (toward E/B) at high speeds.</p> <p>No vehicles are permitted to drive within the enclosure; especially non-site personnel. Even in the event of an emergency.</p> <p>JCE Foreman gathered operatives and sub-contractors, briefed them of the near miss and instructed them to (as reasonably practicable) walk on the central reservation (within the TM closure) until the nearest crossing point when travelling back and forth from compound to W/B (if a vehicle is not present) "</p>	Not Populated

IPV Strike Report - Headline

74 IPV strikes have been recorded since October 2019 with **1** being recorded in April 2023 (Edited Record)

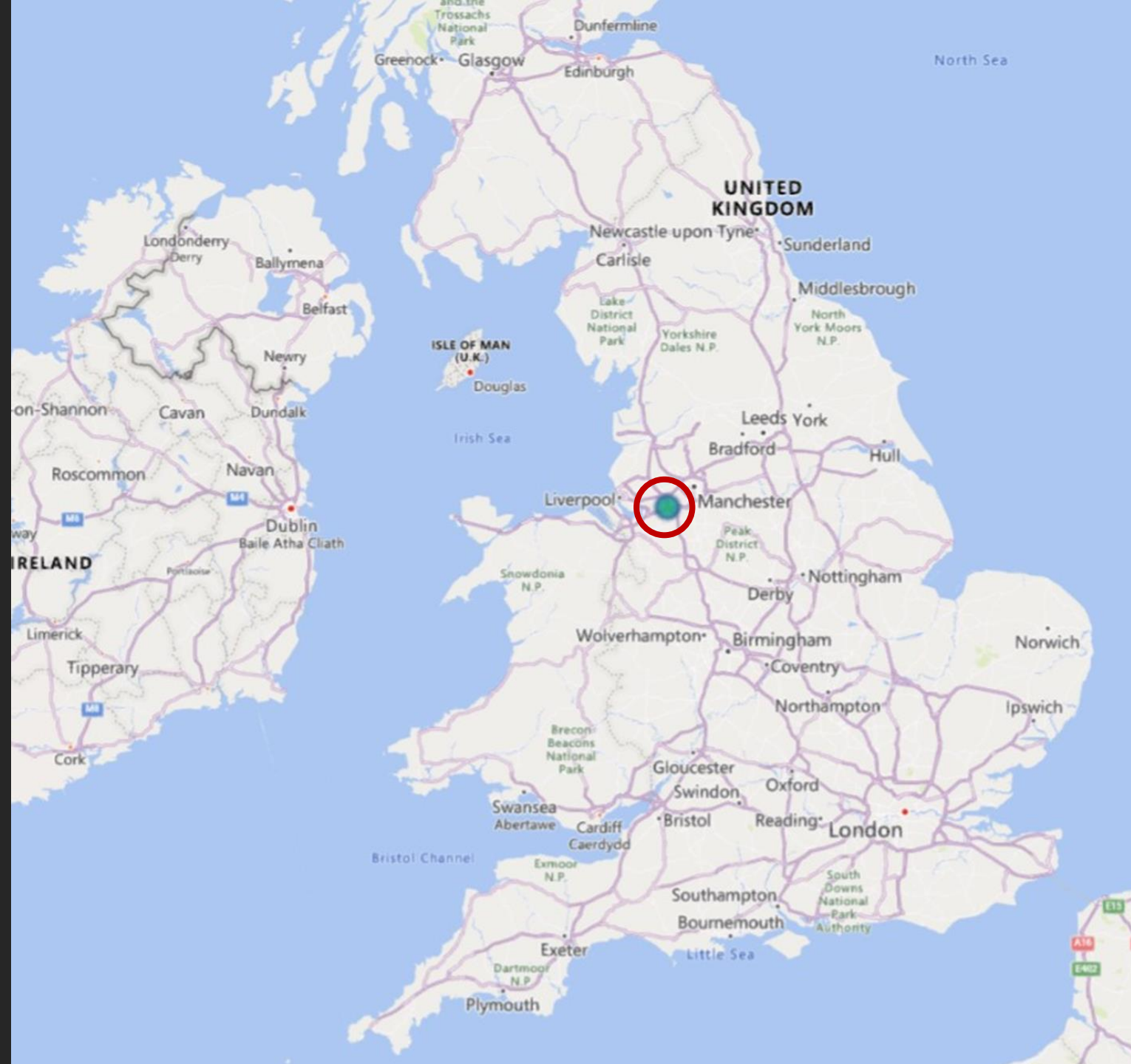
Record ID	Date	Time	Directorate	Region	Programme	Site / Project	Type of Closure	Type of TTM	Location	Specific Location	Details of actual job being done	Describe the facts of what happened	Immediate Actions Taken
140753	04/04/2023	14:15:00	Operations	North West - Operations	North West - Area Contracts	Area 10	Not populated	Not populated	Carriageway A	M6 J20 MP 2989/2	Veg clearance	Side window shattered after lorry passed by at speed while I was on hard shoulder unable to look at road side so came back to compound . Coned area off to side and contacted Roorcroft office	Drove to site parked up and called for assistance

Mobile Carriageway Closure (by Contractor) - EMCC

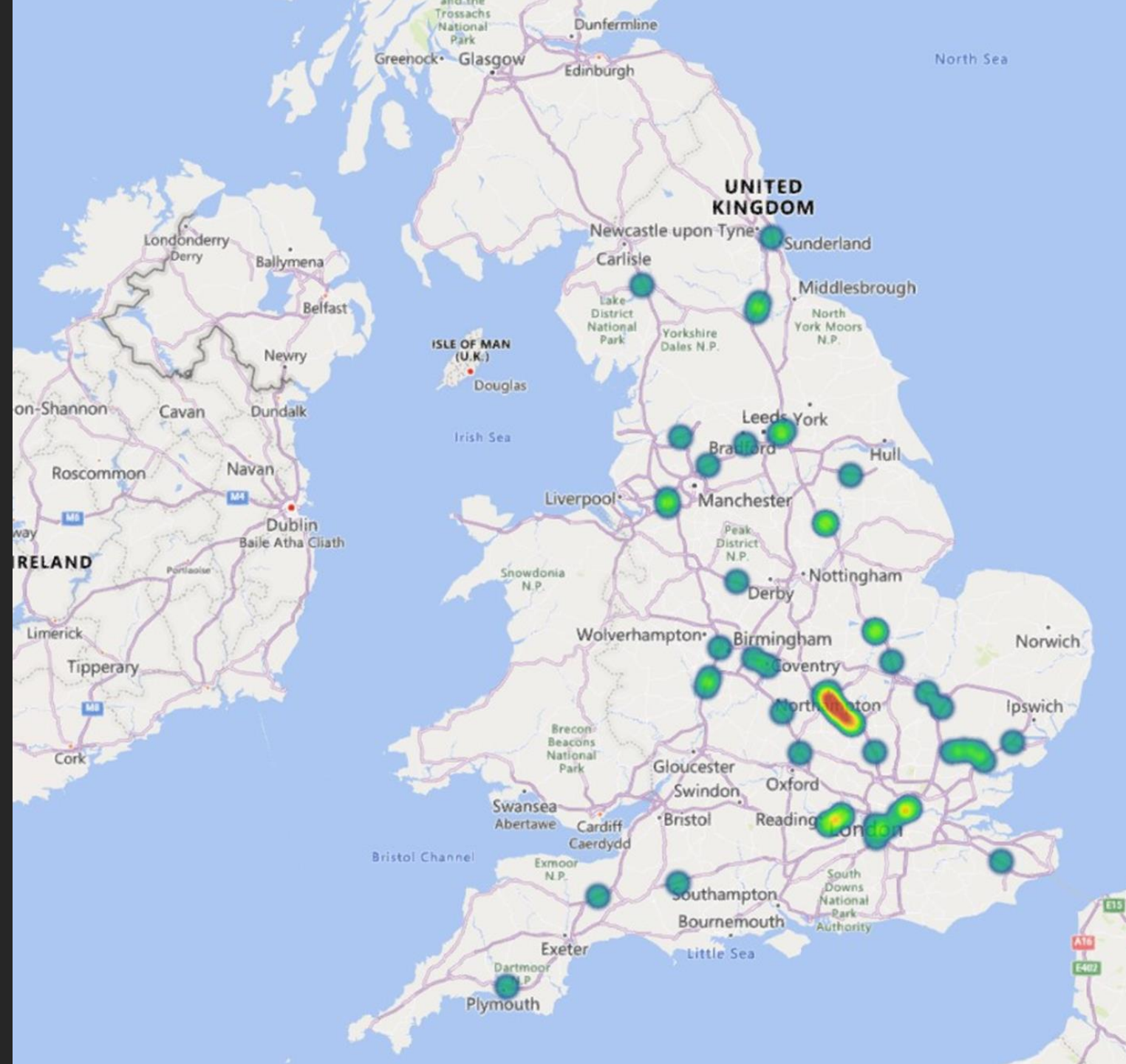
1 incursions have been recorded since November 2022 with **0** being recorded in April 2023 (Edited Record)

Record ID	Date	Time	Directorate	Region	Programme	Site / Project	Road classification	Type of TTM	Incursion type	Vehicle registration
137305	24/01/2023	00:10:00	Operations	Yorkshire & North East - Operations	Yorkshire & North East - Area Contracts	Area 12	Not populated	Lane Closure - Mainline	Incursion; Intentional - To seek benefit	Vehicle 'Registration' not recorded

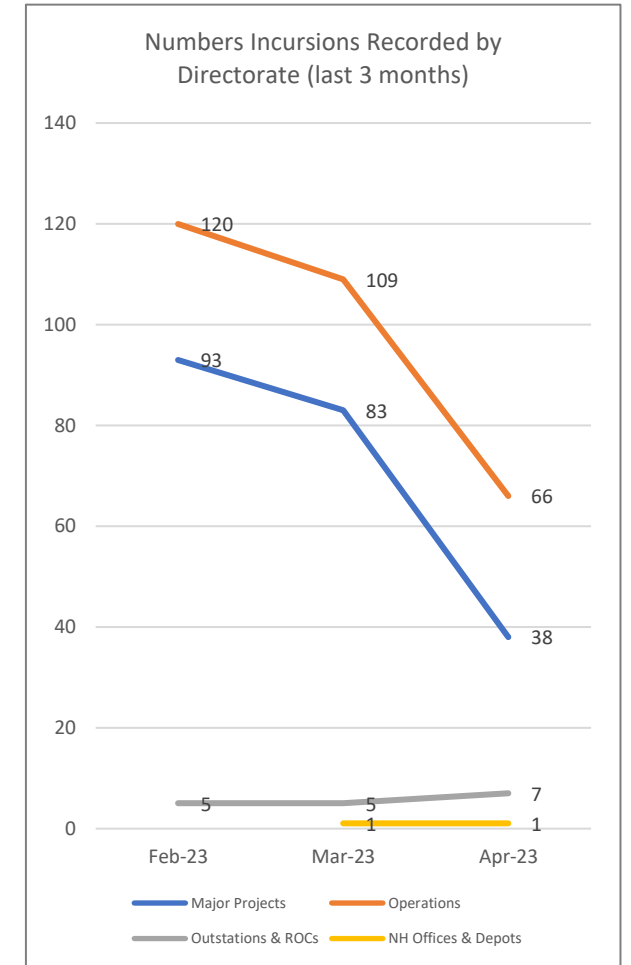
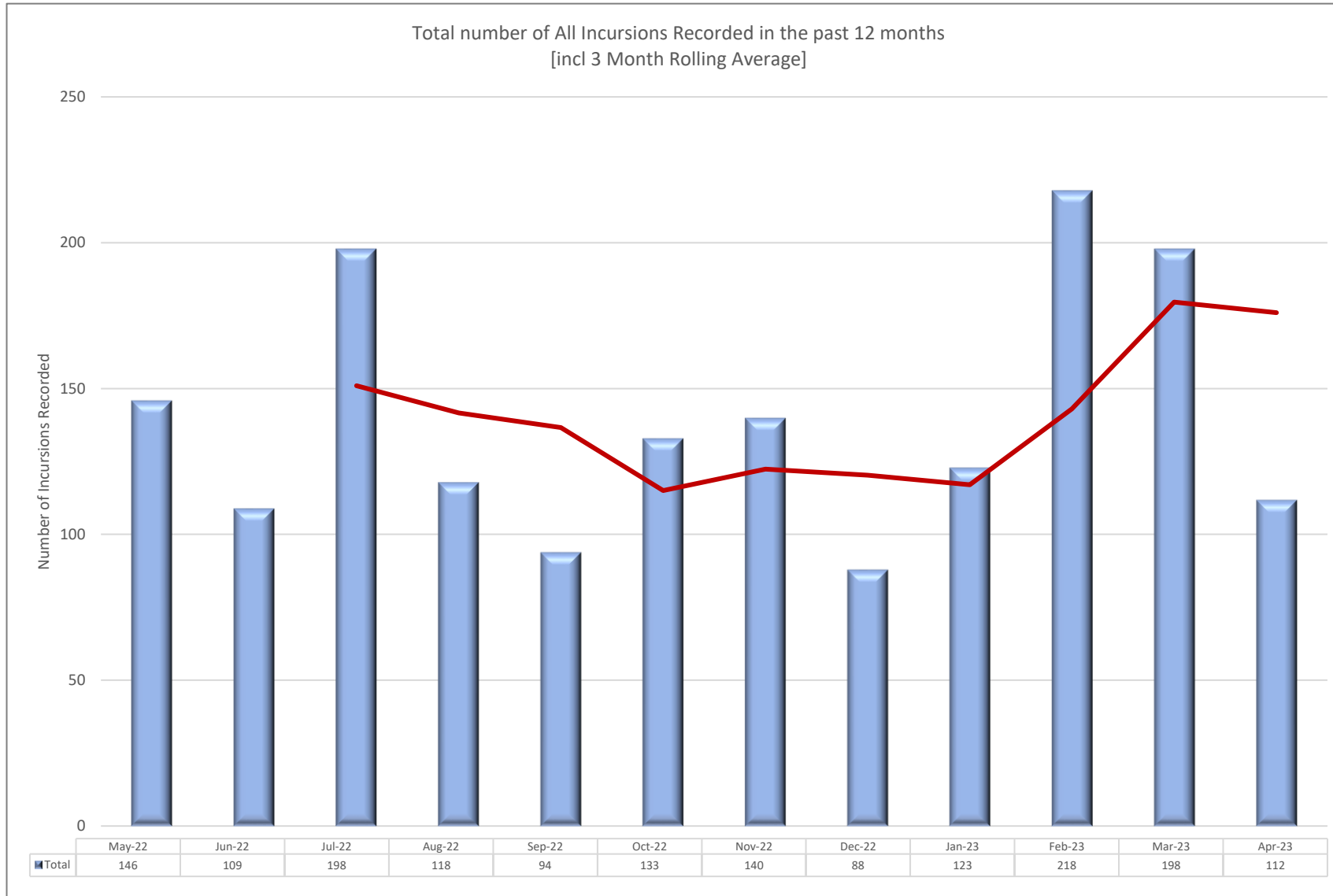
Heatmap of IPV Strikes recorded during April 23



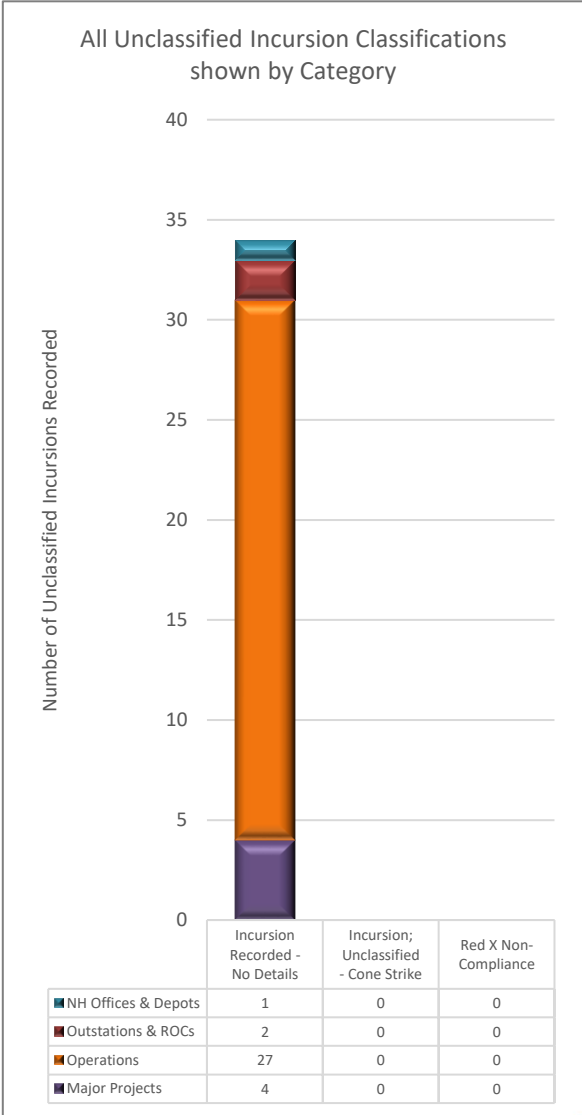
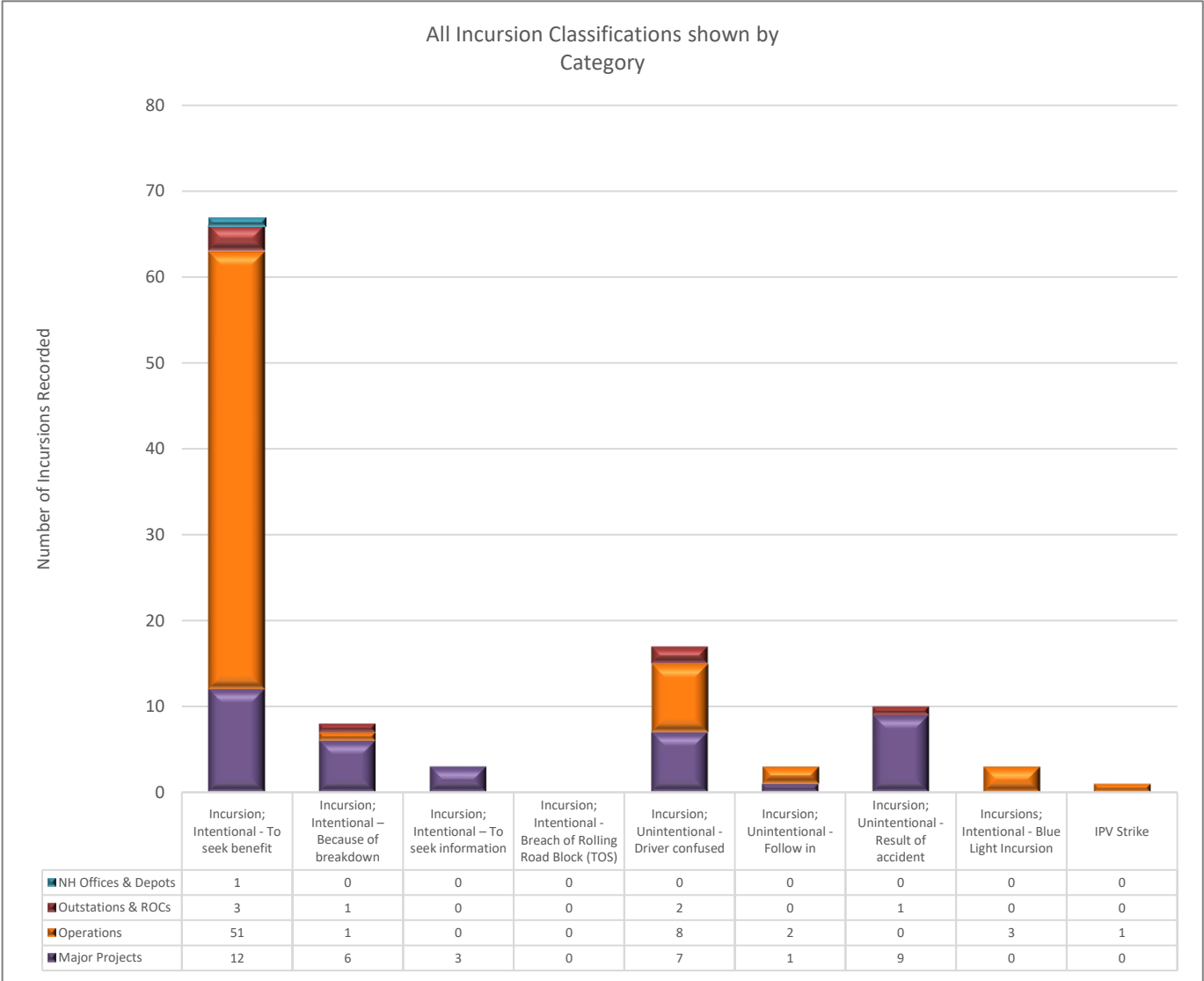
Heatmap of all IPV Strikes recorded



Incursions Report – All Incursions



Incursions Report – All Incursions during April 23



Top incursions categories for this month (across all directorates):

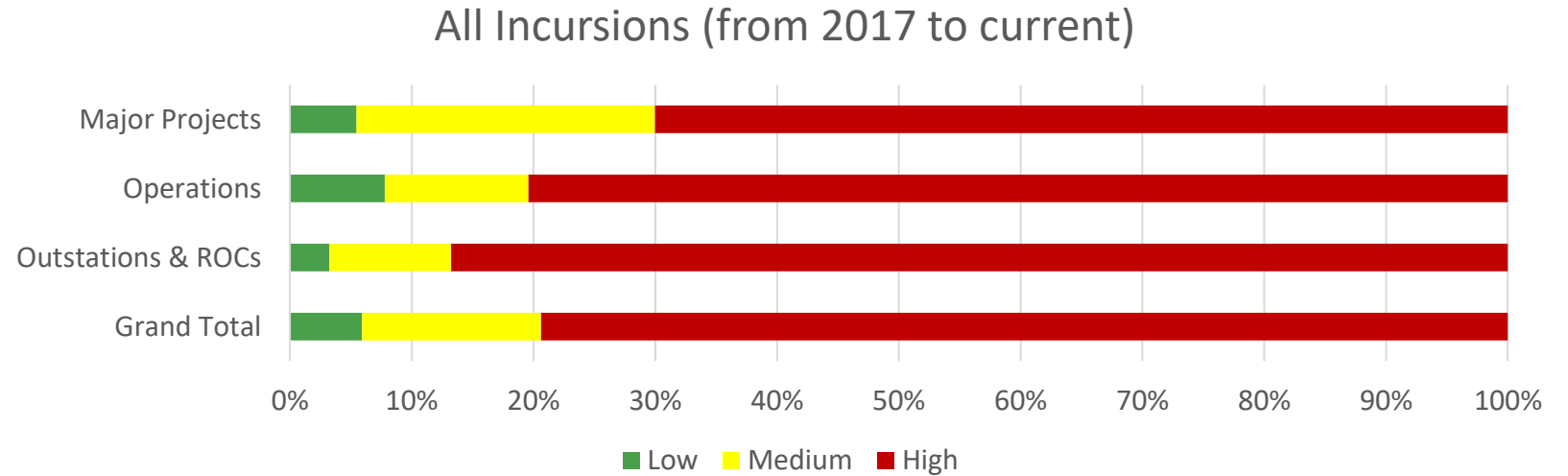
1. Incursion; Intentional - To seek benefit [67]
2. Incursion; Unintentional - Driver confused [17]
3. Incursion; Unintentional - Result of accident [10]
4. Incursion; Intentional – To seek information [3]
5. Incursion; Unintentional - Follow in [3]
6. Incursions; Intentional - Blue Light Incursion [3]
7. IPV Strike [1]
8. Incursion; Intentional - Breach of Rolling Road Block (TOS) [0]

Note - Incursion; Intentional – Because of breakdown [8]

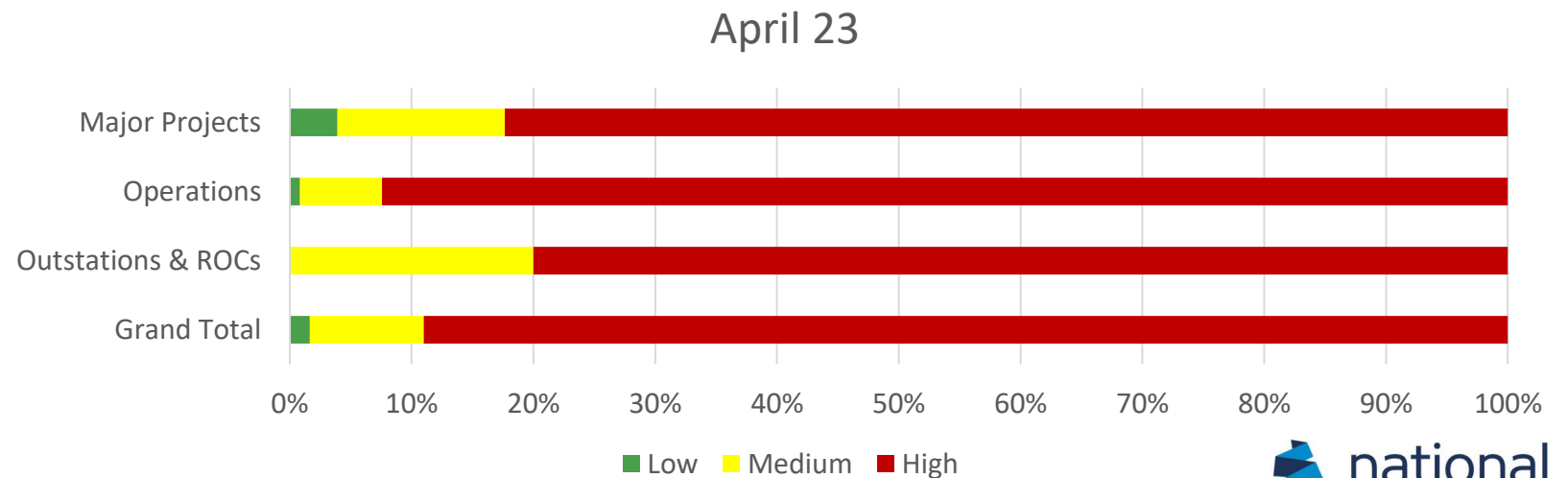


Incursions Report – Overall Risk Ratings

Overall Risk Ratings of all incursions recorded since October 2017



In month Risk Ratings of all incursions recorded in month



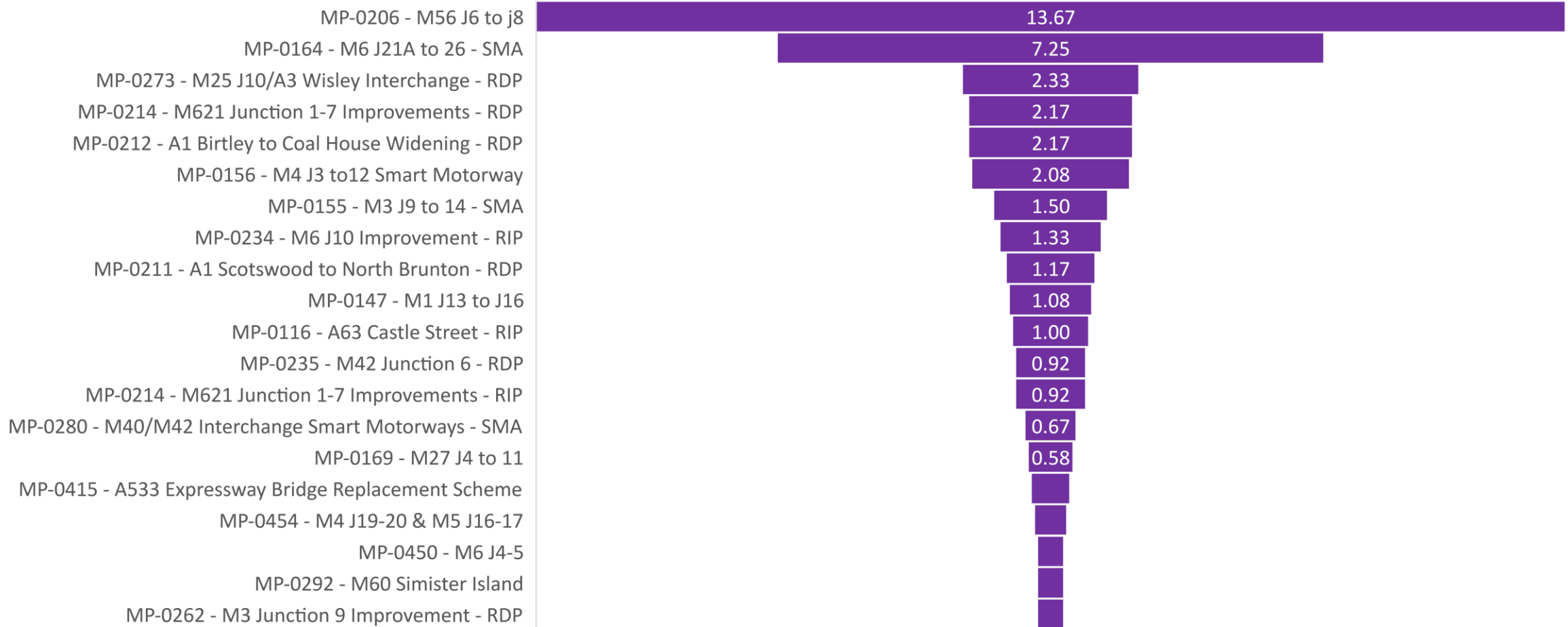
Incursions Report - Headline

Table shows the average number of incursions recorded by directorate and type in the past 12-month period.

Incursion Category	Directorate			Comments
	Major Projects	Operations	Outstations & ROCs	
Incursion; Intentional - To seek benefit	21.67	36.08	2.08	To 'Seek Benefit' incursions is higher in Operations
Incursion; Intentional – To seek information	1.17	0.83	0.00	To 'Seek Information' incursions has increased from the previous month in Operations
Incursion; Intentional – Because of breakdown	31.92	3.33	0.33	'Breakdowns' is substantially higher in Major Projects (due to the number of long-term closures being installed)
Incursion; Intentional - Breach of Rolling Road Block (TOS)	0.17	0.00	0.67	
Incursion; Unintentional - Driver confused	12.42	10.17	1.50	'Driver Confused' incursions is higher in Major Projects then it is in Operations
Incursion; Unintentional - Follow in	1.75	2.50	0.17	'Follow in' incursions is higher in Operations then it is in Major Projects
Incursion; Unintentional - Result of accident	3.50	1.33	0.42	'Result of an Accident' incursions is higher in Major Projects then it is in Operations
IPV Strike	0.42	1.50	0.17	'IPV Strike' is higher in Operations
Incursions; Intentional – Blue Light Incursion	2.50	2.83	0.00	'Blue Light' incursions is slightly higher in Operations

Incursions Report for Major Projects

12 month rolling average of the number of all 'Incursions per Month'*



- Excluding incursions as a result of breakdown
- Duplicate scheme names are as a result of the change from Airswab to HART

Incursions Report for Major Projects

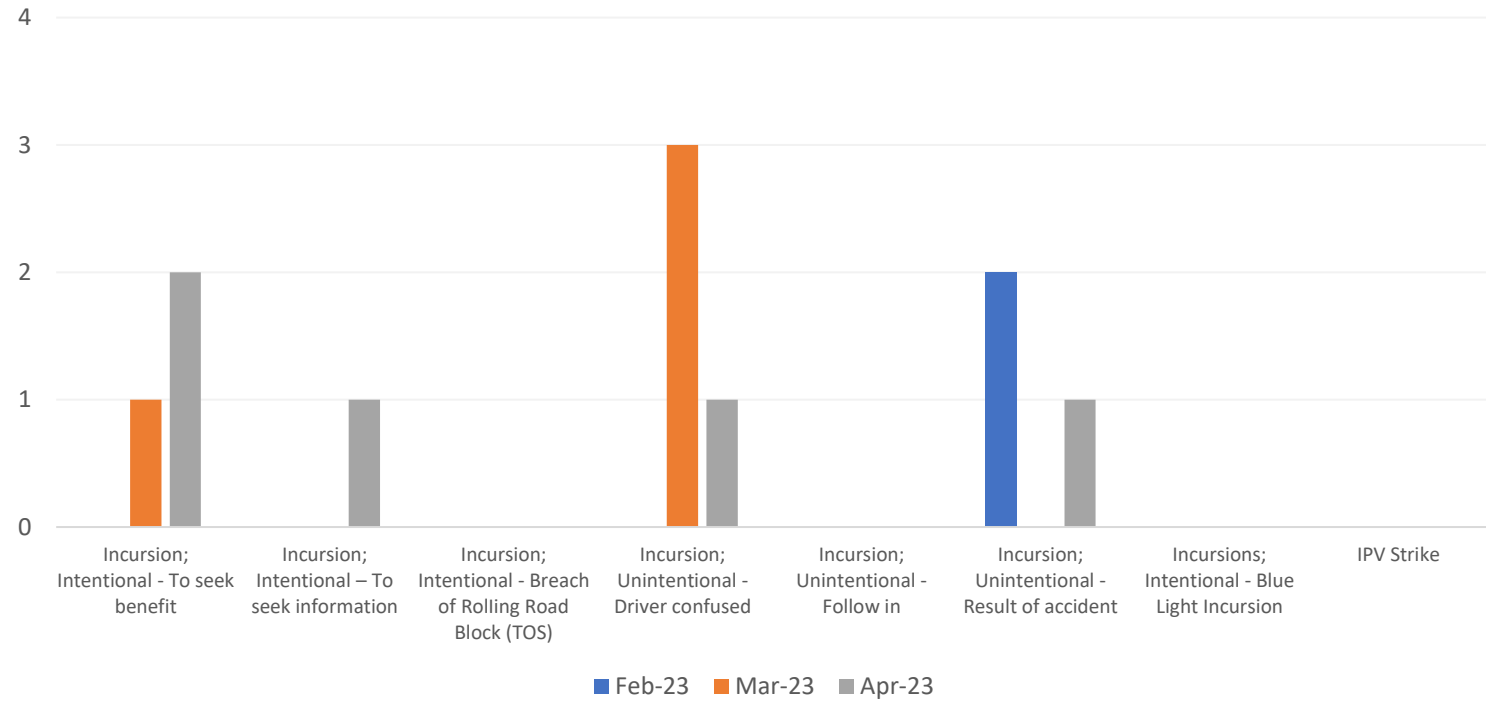
3 Month Incursion analysis

- MP-0214 - M621 Junction 1-7 Improvements - RDP a total of 5 incursions have been recorded; with a 100% increase in 'Seeking Benefit' type incursions together with a 100% increase in 'Result of accident', 100% increase in 'To seek information' and a 67% decrease in 'Driver confused' incursions
- Bottom left – Project Incursion Risk Rating with 'In-month' rating being worse than the 'Overall' rating & incursion rate per length of TM
- Bottom middle – Time profile for 'Driver Confused' incursion types
- Bottom right – localised heatmap of 'Driver Confused' incursion types

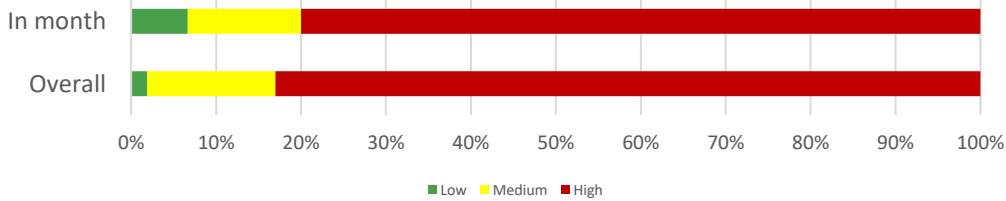
Type of Roadworks: Not Populated / Lane Closures (mainline)

Type of TTM: Not Populated / Hard shoulder closures

MP-0214 - M621 Junction 1-7 Improvements



Project Risk Rating

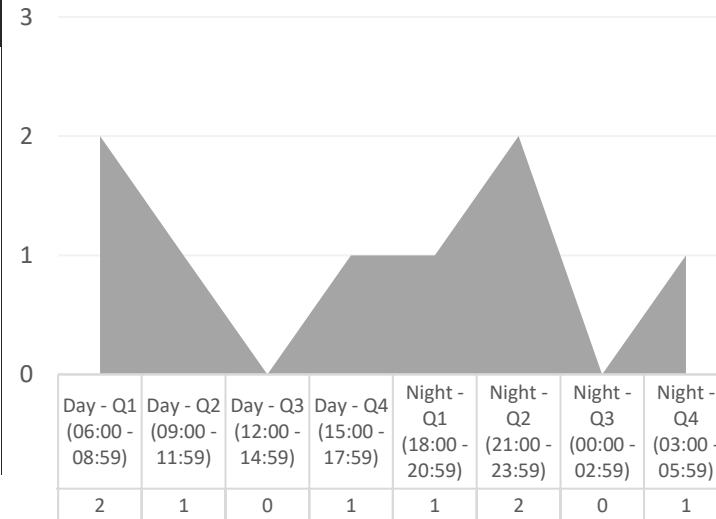


Incursion rate per length of TM (4.8km)

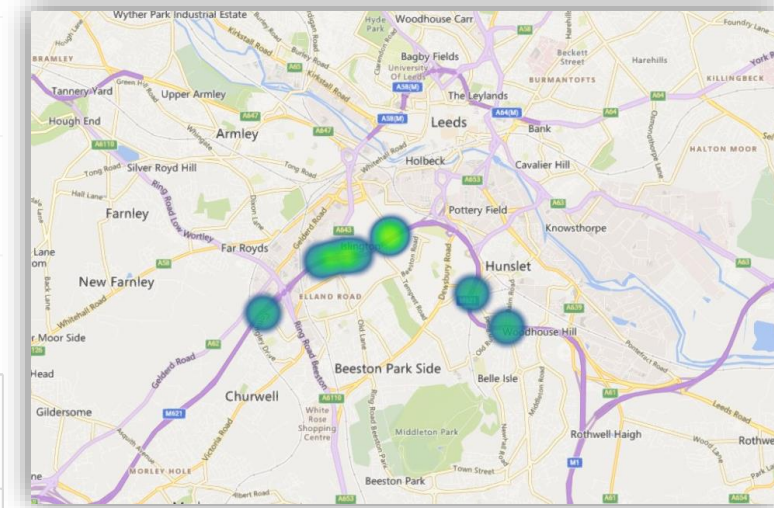
Project Incursion Rate: 6.67 incursions/km or 10.73 incursions/miles

Breakdown Rate: 4.17 incidents/km or 6.70 incidents/miles

Time Profile of Incursions recorded



Heatmap



Incursions Report for Major Projects

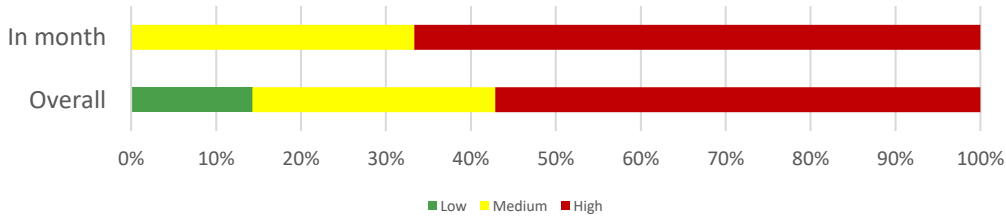
3 Month Incursion analysis

- MP-0280 - M40/M42 Interchange Smart Motorways - SMA a total of 2 incursions have been recorded; with a no change from the previous month in 'Seeking Benefit' type incursions together with a 50% decrease in 'Driver confused' type incursions
- Bottom left – Project Incursion Risk Rating with 'In-month' rating being worse than the 'Overall' rating & incursion rate per length of TM
- Bottom middle – Time profile for 'Driver Confused' incursion types
- Bottom right – localised heatmap of 'Driver Confused' incursion types

Type of Roadworks: Full Closure / Lane Closures (mainline)

Type of TTM: Not Populated / Hard shoulder closures

Project Risk Rating

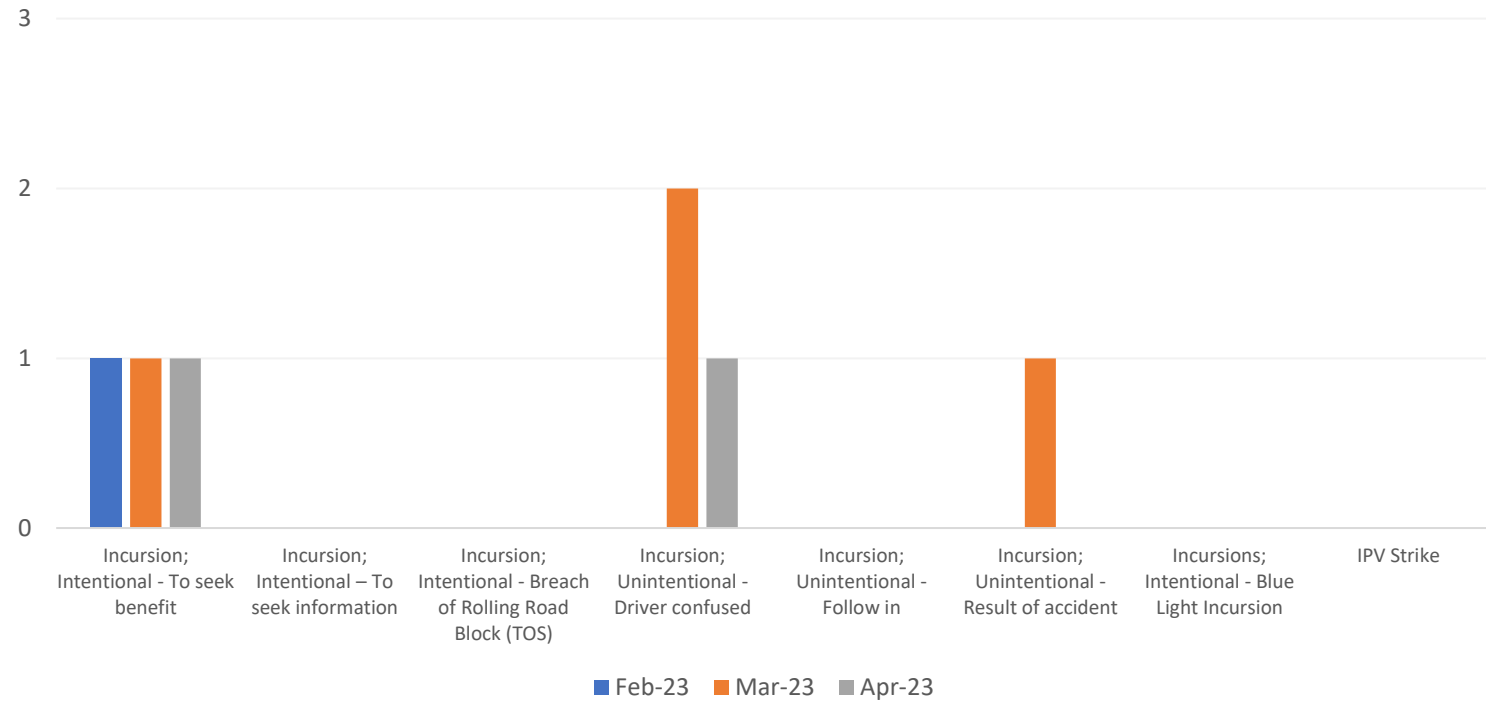


Incursion rate per length of TM (TM Length required)

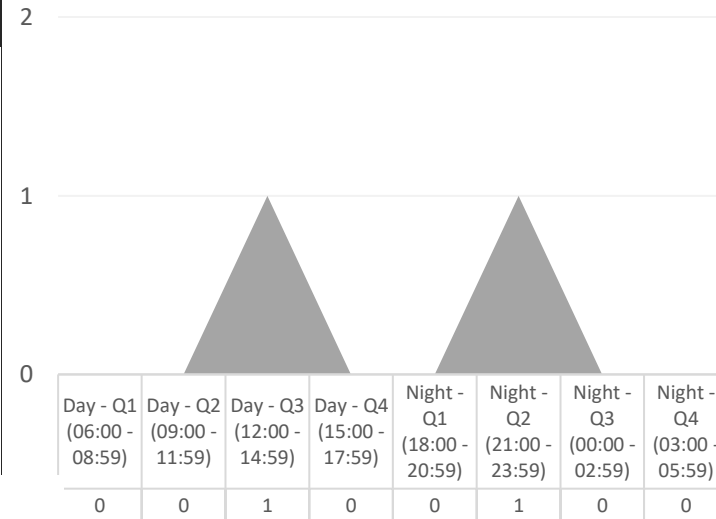
Project Incursion Rate: TM Length required

Breakdown Rate: TM Length required

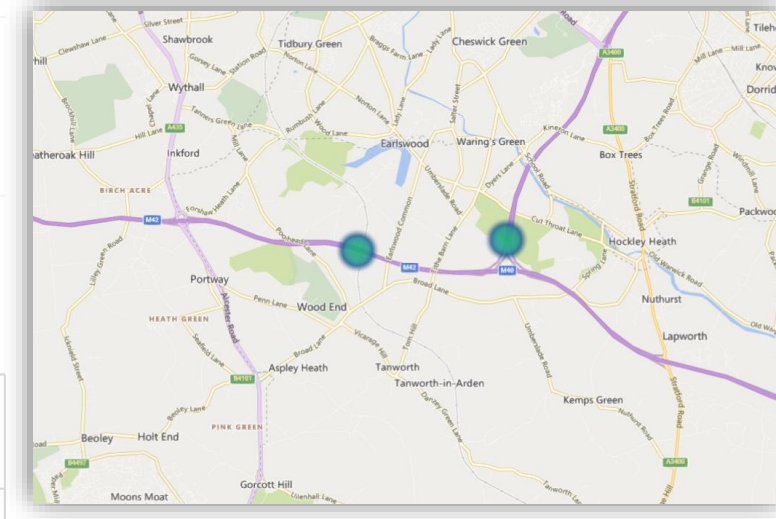
MP-0280 - M40/M42 Interchange Smart Motorways - SMA



Time Profile of Incursions recorded



Heatmap



Incursions Report for Major Projects

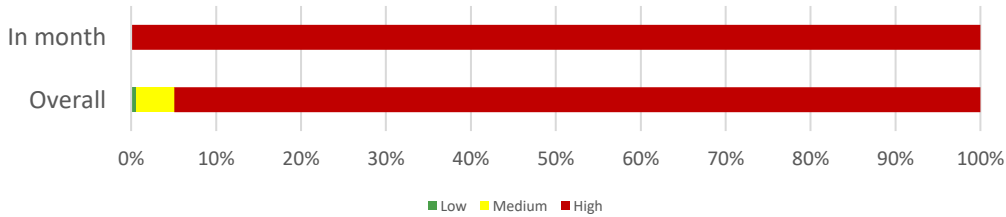
3 Month Incursion analysis

- MP-0147 - M1 J13 to J16 a total of 1 incursions have been recorded; with a 100% increase in 'Seeking Benefit' type incursions
- Bottom left – Project Risk Rating with 'In-month' rating being worse than the 'Overall' rating & incursion rate per length of TM
- Bottom middle – Time profile for 'IPV Strike' incursion types
- Bottom right – localised heatmap of 'IPV Strike'

Type of Roadworks: Full & Lane Closures (Mainline & Slip)

Type of TTM: Not Populated / Relaxed works (Lane & slip & links closures)

Project Risk Rating

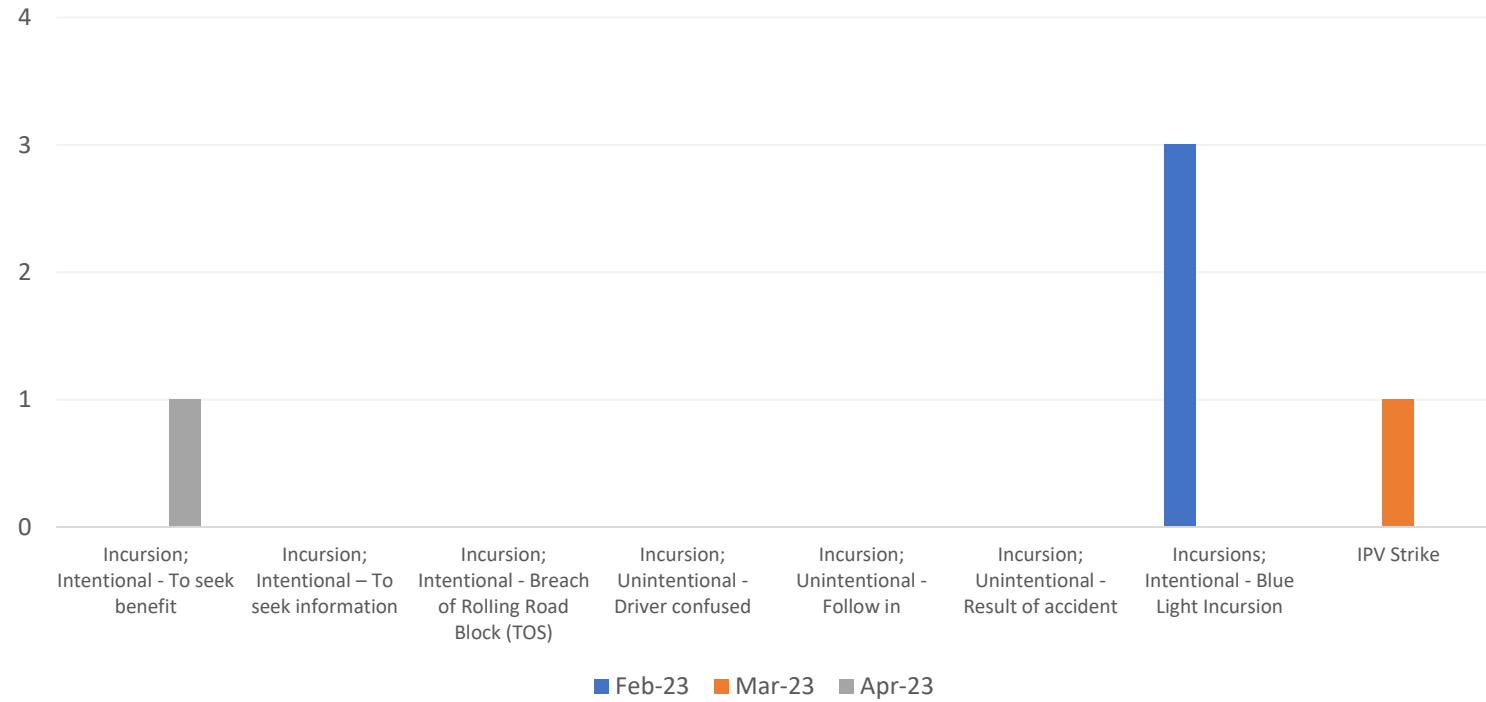


Incursion rate per length of TM (Unknown)

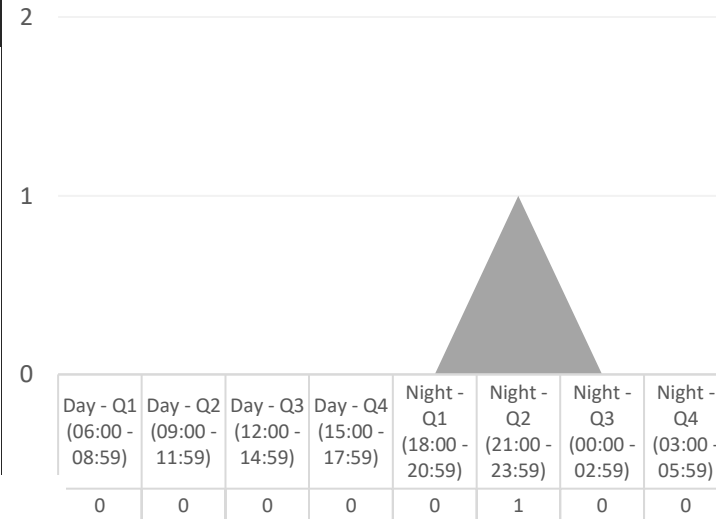
Project Incursion Rate: TM Length required

Breakdown Rate: TM Length required

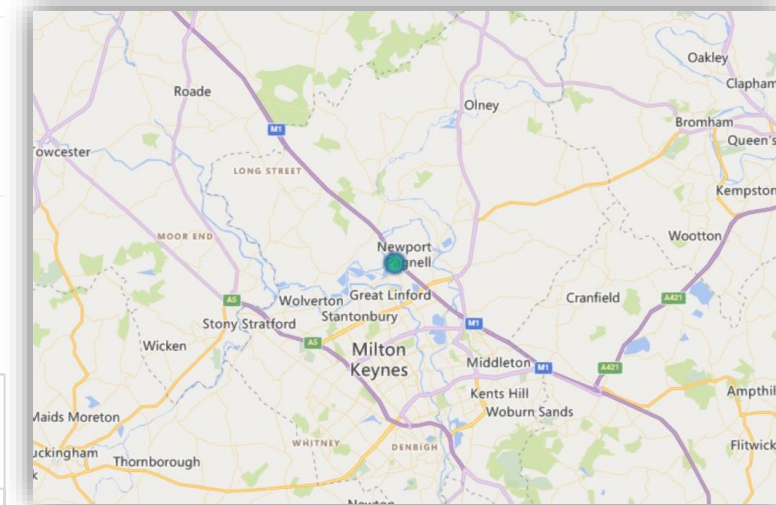
MP-0147 - M1 J13 to J16



Time Profile of Incursions recorded

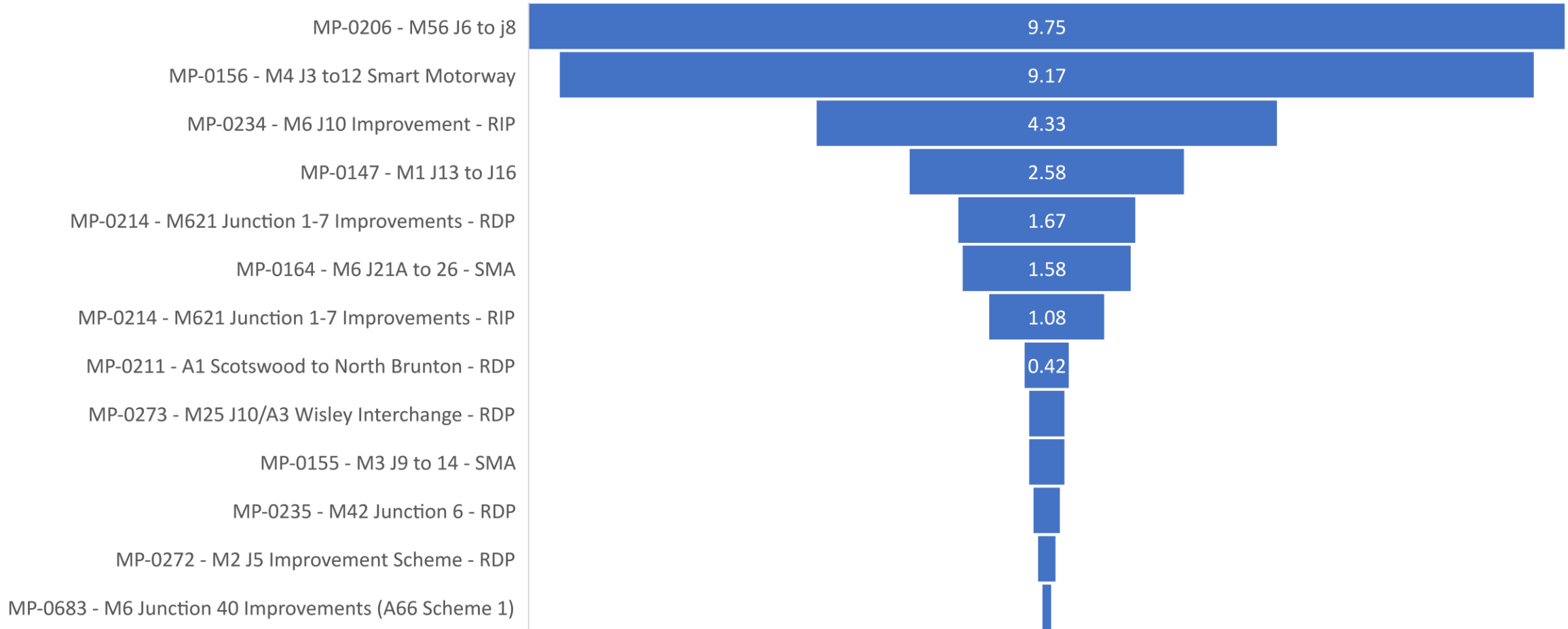


Heatmap



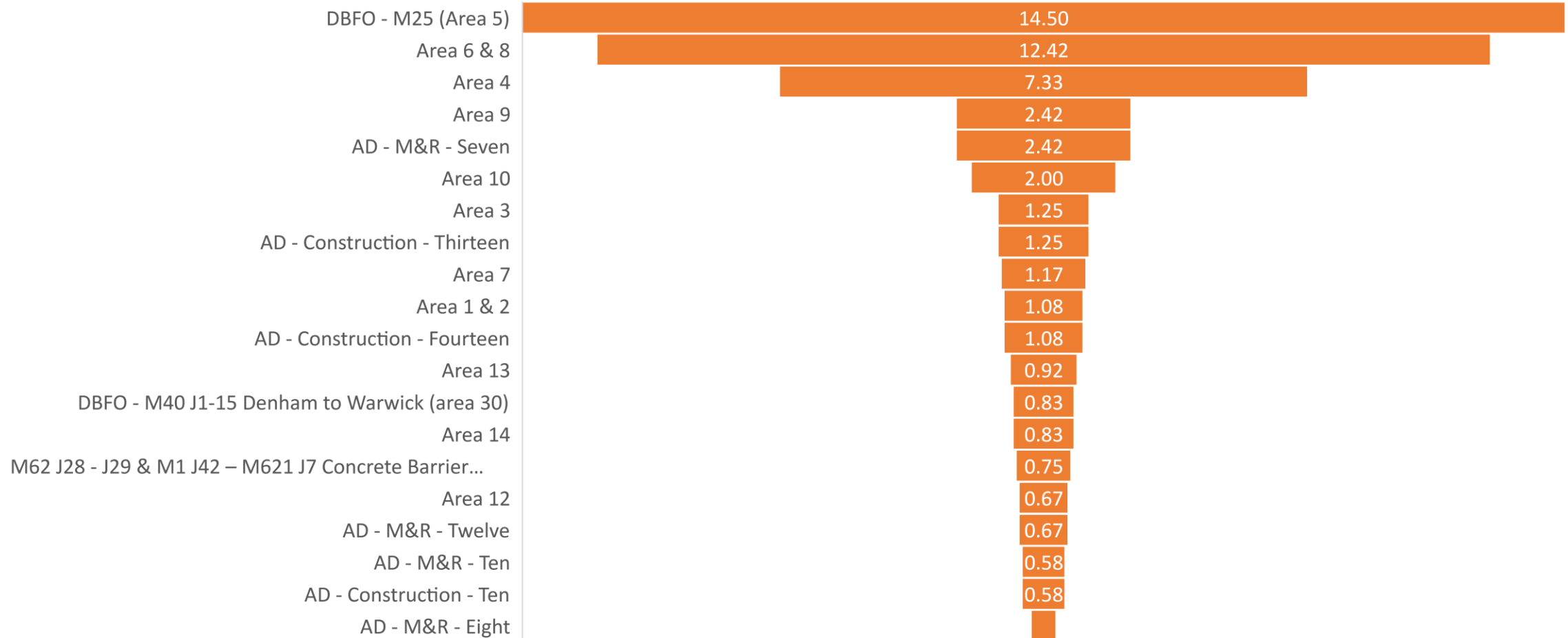
Incursions Report for Major Projects

12 month rolling average of the number of 'Breakdown Incursions per Month' (only)



Incursions Report for Operations Directorate

12 month rolling average of the number of all 'Incursions per Month'*



* Excluding incursions as a result of breakdown

Incursions Report for Operations Directorate

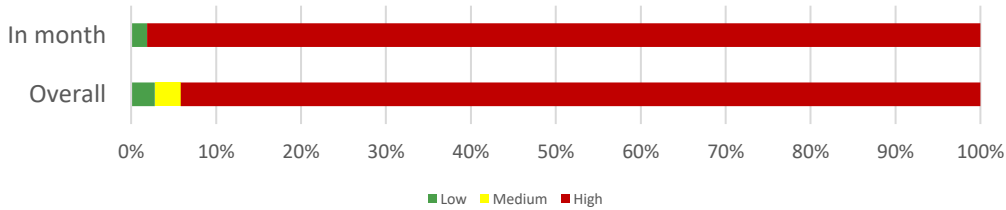
3 Month Incursion analysis

- DBFO - M25 (Area 5) a total of 14 incursions have been recorded; with a 100% increase in 'Blue Light' type incursions together with a 100% increase in 'Follow in' incursions, with a 50% decrease in 'Seeking Benefit' type incursions
- Bottom left – Area Incursion Risk Rating with 'In-month' rating being worse than the 'Overall' rating
- Bottom middle – Time profile for 'all' incursion types
- Bottom right – localised heatmap 'all' incursion types

Type of Roadworks: Full & Lane closures

Type of TTM: Various Relaxation (Full / Lane / Slip) and Standard (Contraflow / Narrow and Single)

Area Incursion Risk Rating

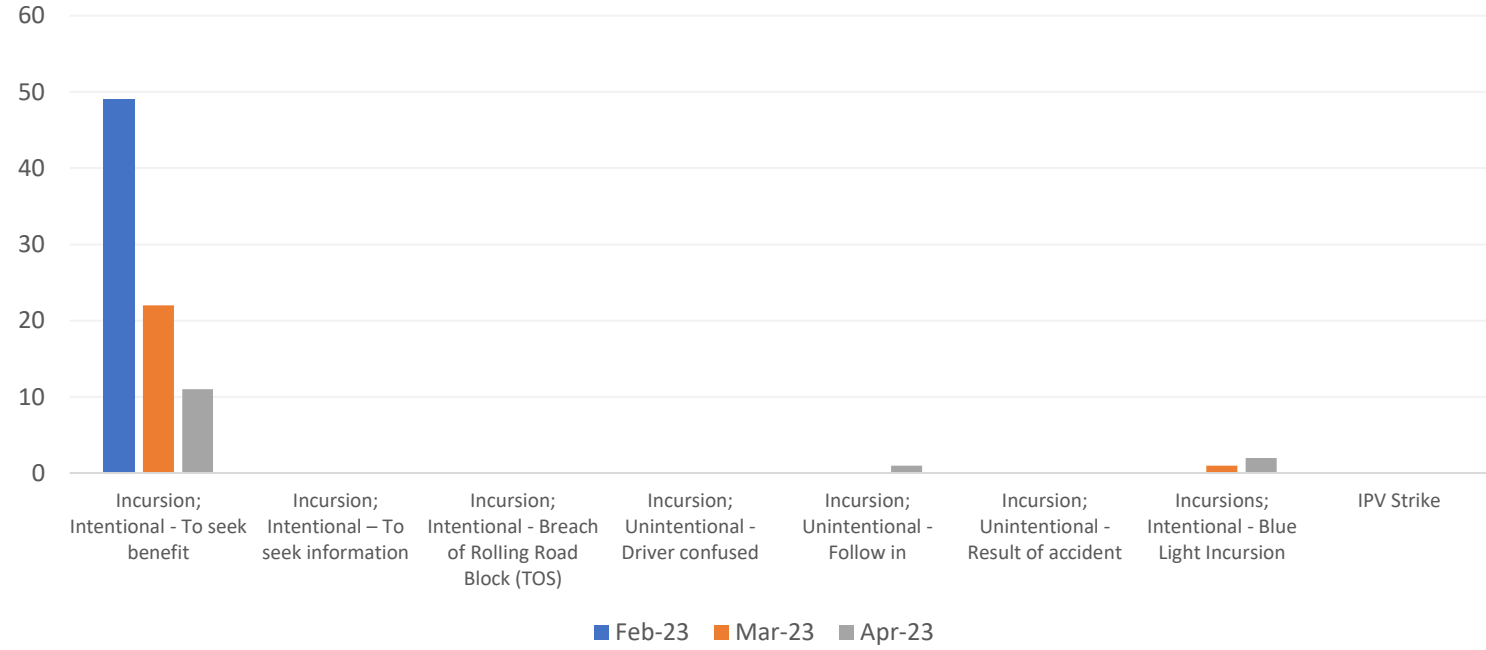


Incursion rate per length of TM (Unknown)

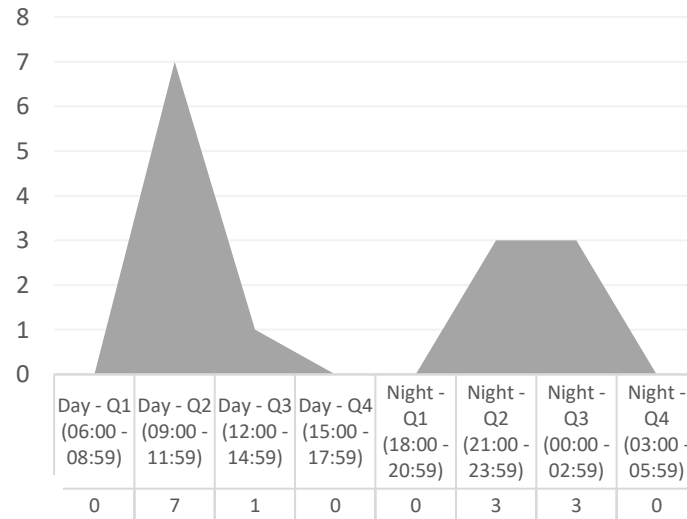
Project Incursion Rate: Length of TM data not available

Breakdown Rate: Length of TM data not available

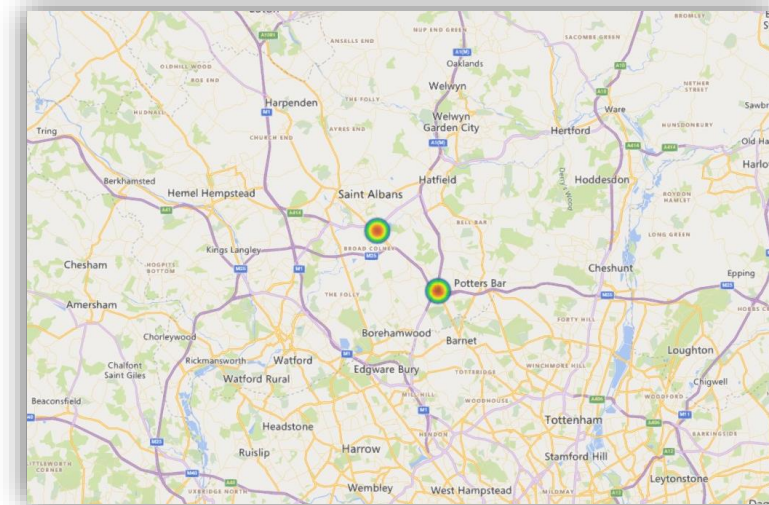
Area 5



Time Profile of Incursions recorded



Heatmap



Incursions Report for Operations Directorate

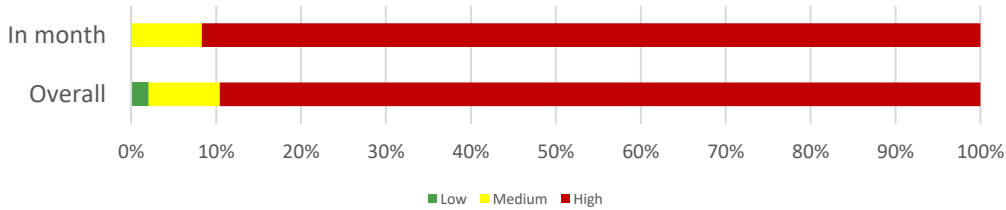
3 Month Incursion analysis

- Area 4 a total of 13 incursions have been recorded; with a 120% increase in 'Seeking Benefit' type incursions together with a 50% decrease in 'Driver confused' type incursions
- Bottom left – Area Incursion Risk Rating with 'In-month' rating worse than 'Overall' rating
- Bottom middle – Time profile for 'all' incursion types recorded
- Bottom right – localised heatmap of 'all' incursion types recorded

Type of Roadworks: Full & Lane closures

Type of TTM: Various Relaxation (Full / Lane / Slip) and Standard (Contraflow / Narrow and Single)

Area Incursion Risk Rating

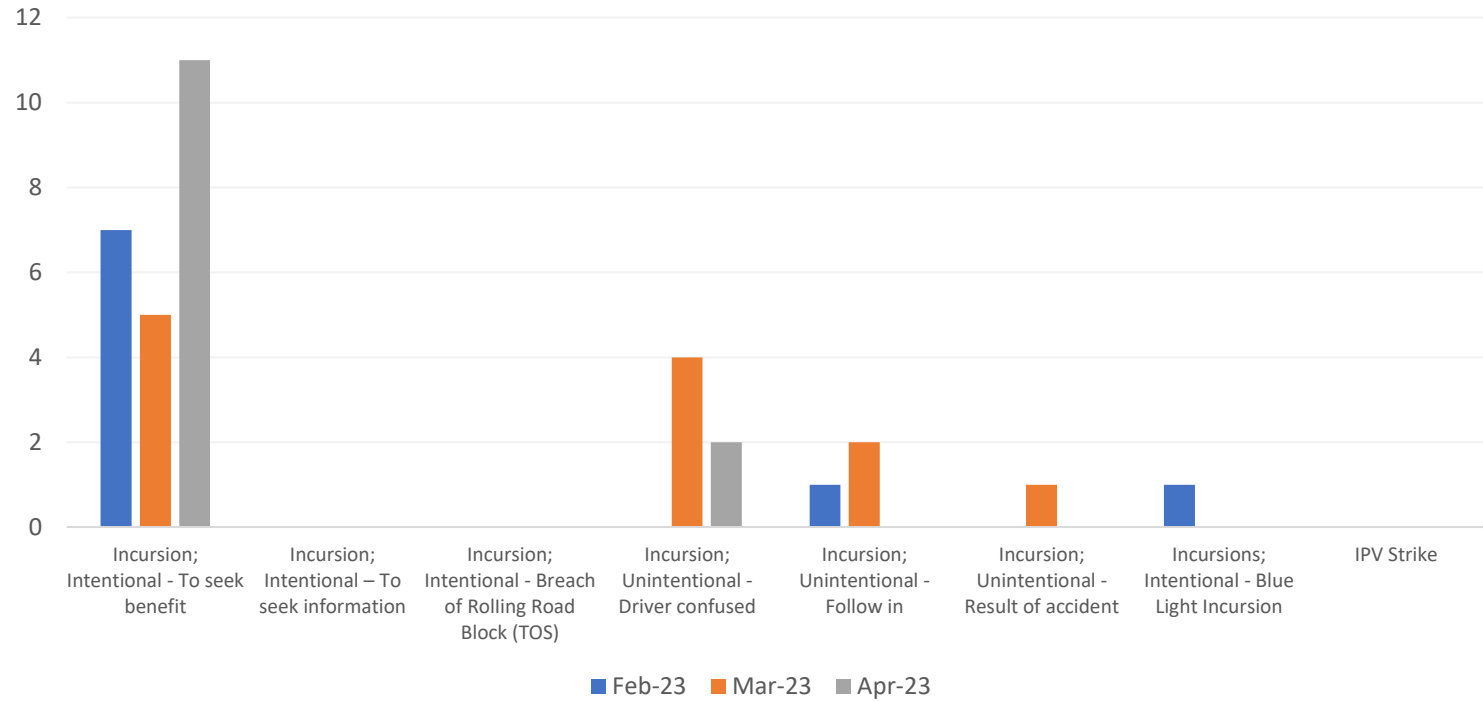


Incursion rate per length of TM (Unknown)

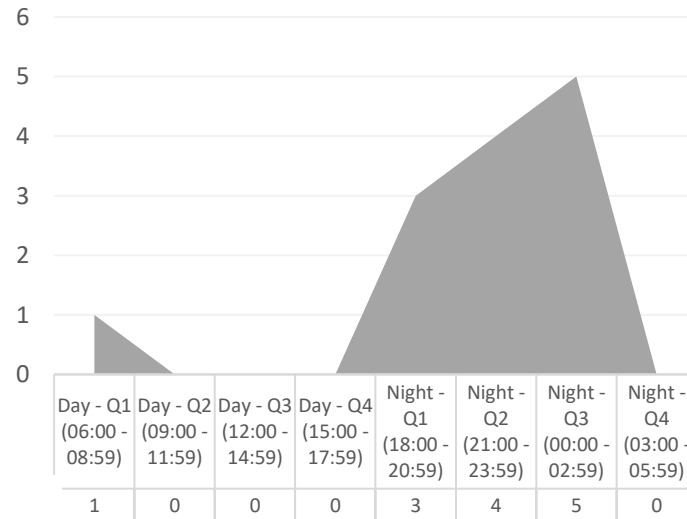
Project Incursion Rate: Length of TM data not available

Breakdown Rate: Length of TM data not available

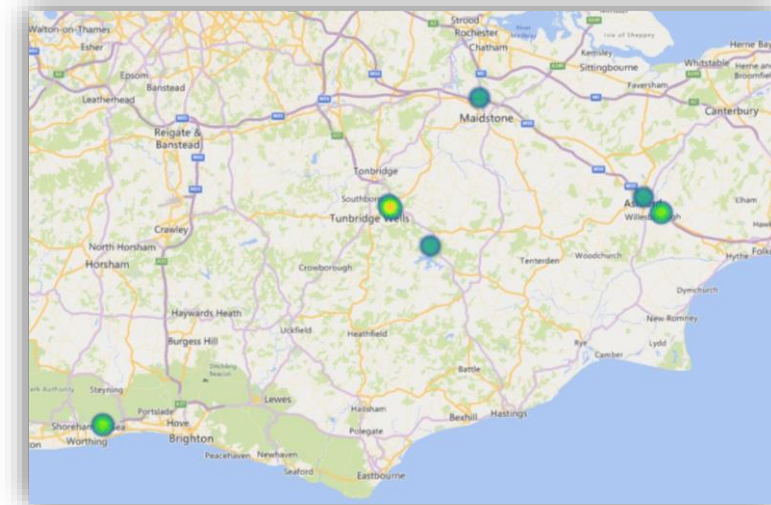
Area 4



Time Profile of Incursions recorded



Heatmap



Incursions Report for Operations Directorate

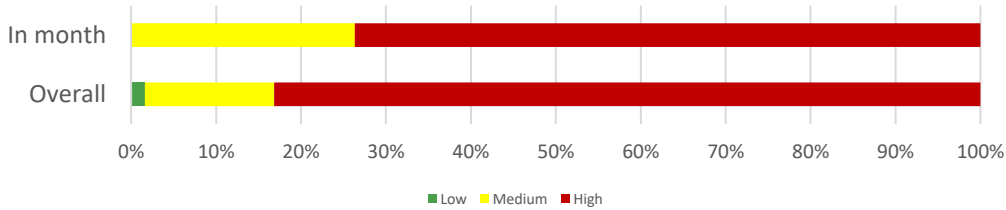
3 Month Incursion analysis

- Area 6 & 8 a total of 12 incursions have been recorded; with a 100% increase in 'Blue Light' type incursions together with a 17% decrease in 'Driver confused' and 60% decrease in 'Seeking Benefit' type incursions
- Bottom left – Area Incursion Risk Rating with 'In-month' rating worse than 'Overall' rating
- Bottom middle – Time profile for 'all' incursion types recorded
- Bottom right – localised heatmap of 'all' incursion types recorded

Type of Roadworks: Full & Lane closures

Type of TTM: Various Relaxation (Full / Lane / Slip) and Standard (Contraflow / Narrow and Single)

Area Incursion Risk Rating

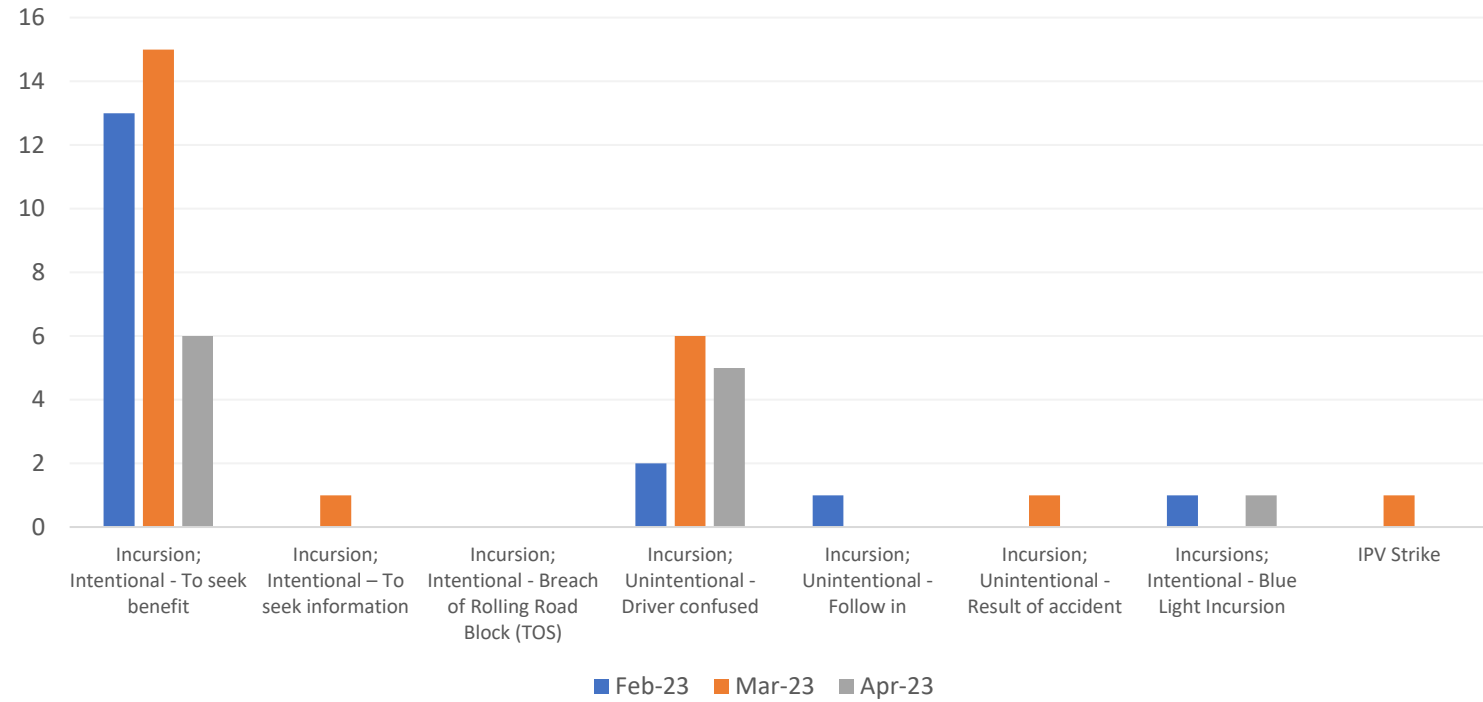


Incursion rate per length of TM (Unknown)

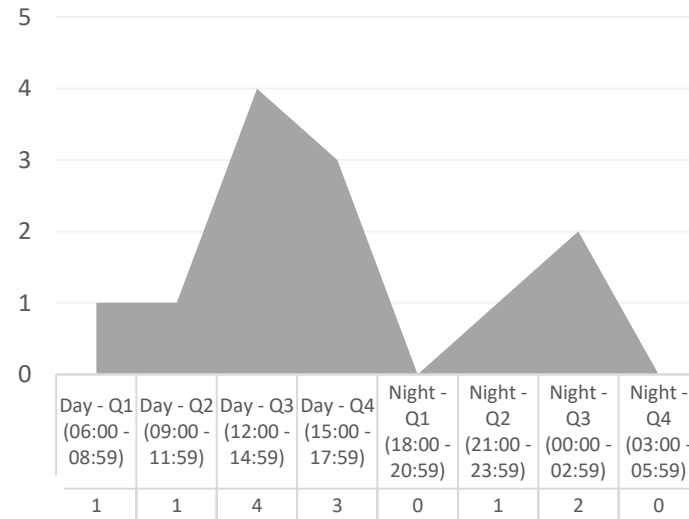
Project Incursion Rate: Length of TM data not available

Breakdown Rate: Length of TM data not available

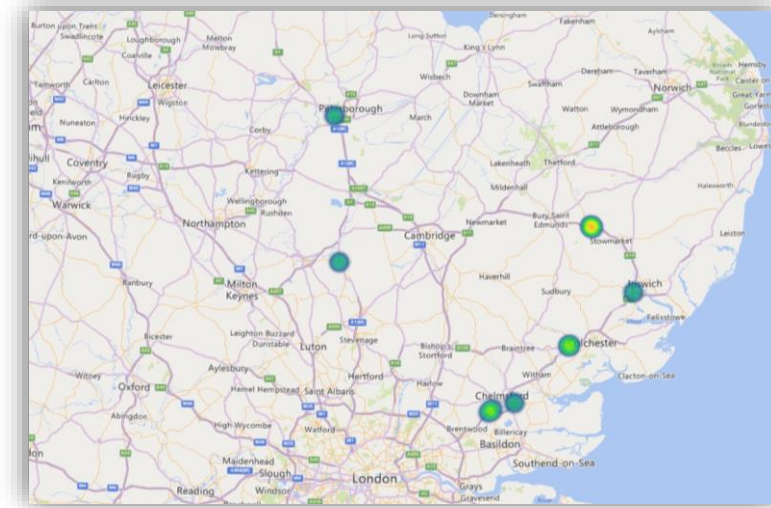
Area 6 & 8



Time Profile of Incursions recorded



Heatmap



Incursions Report for Operations Directorate

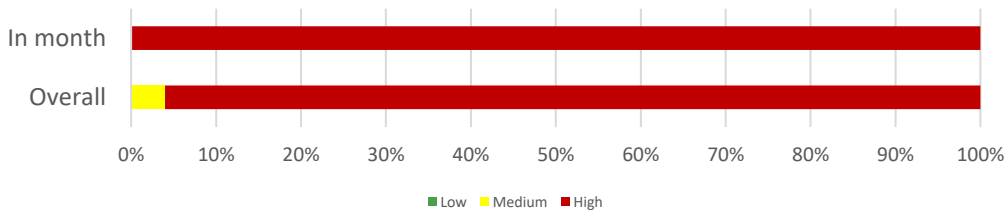
3 Month Incursion analysis

- AD - Construction - Fourteen a total of 6 incursions have been recorded; with a 20% increase in 'Seeking Benefit' type incursions
- Bottom left – Area Incursion Risk Rating with 'In-month' rating being worse than the 'Overall' rating
- Bottom middle – Time profile for 'all' incursion types
- Bottom right – localised heatmap 'all' incursion types

Type of Roadworks: Full Closure (Slip Road) / Lane Closures (Mainline and Slip) / Not populated

Type of TTM: Relaxation & Standard works

Area Incursion Risk Rating

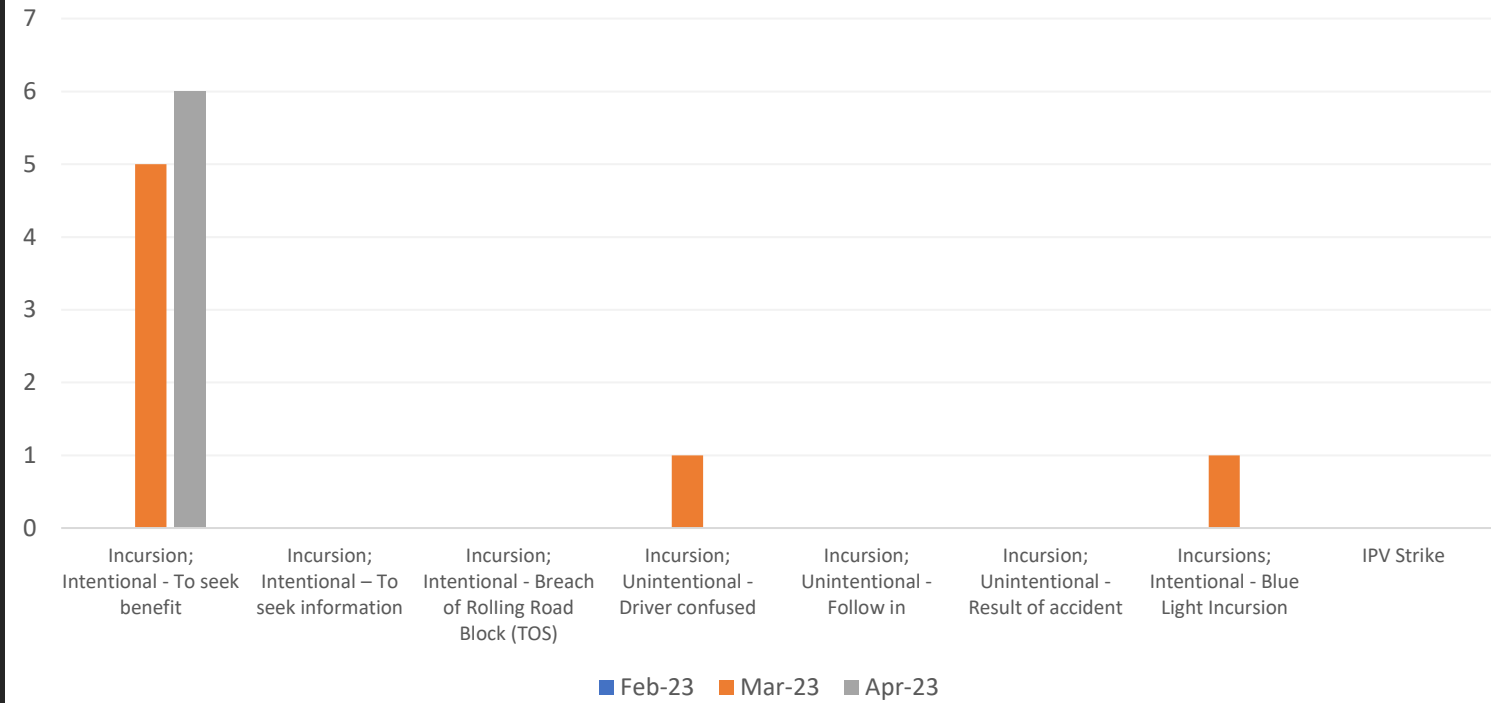


Incursion rate per length of TM (Unknown)

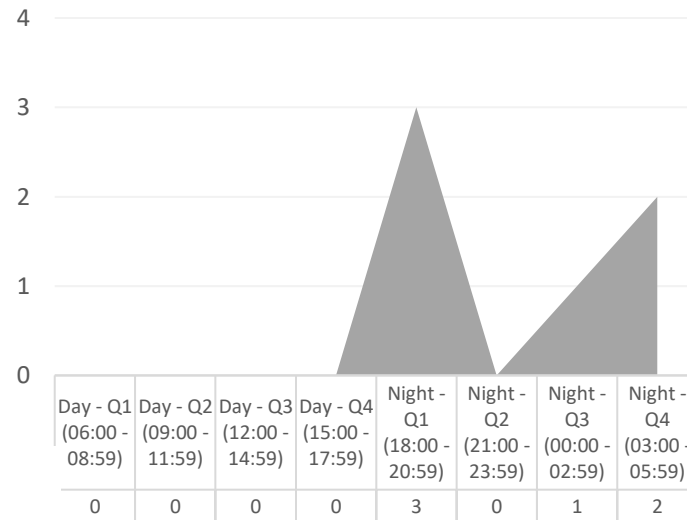
Project Incursion Rate: Length of TM data not available

Breakdown Rate: Length of TM data not available

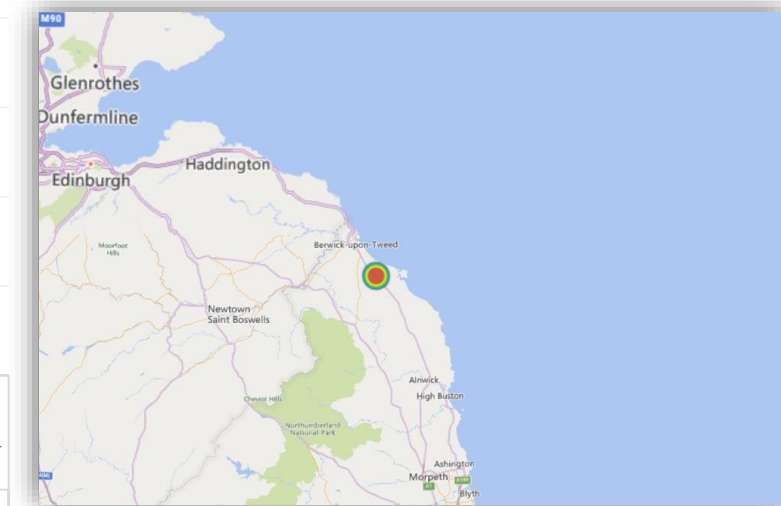
AD - Construction - Fourteen



Time Profile of Incursions recorded

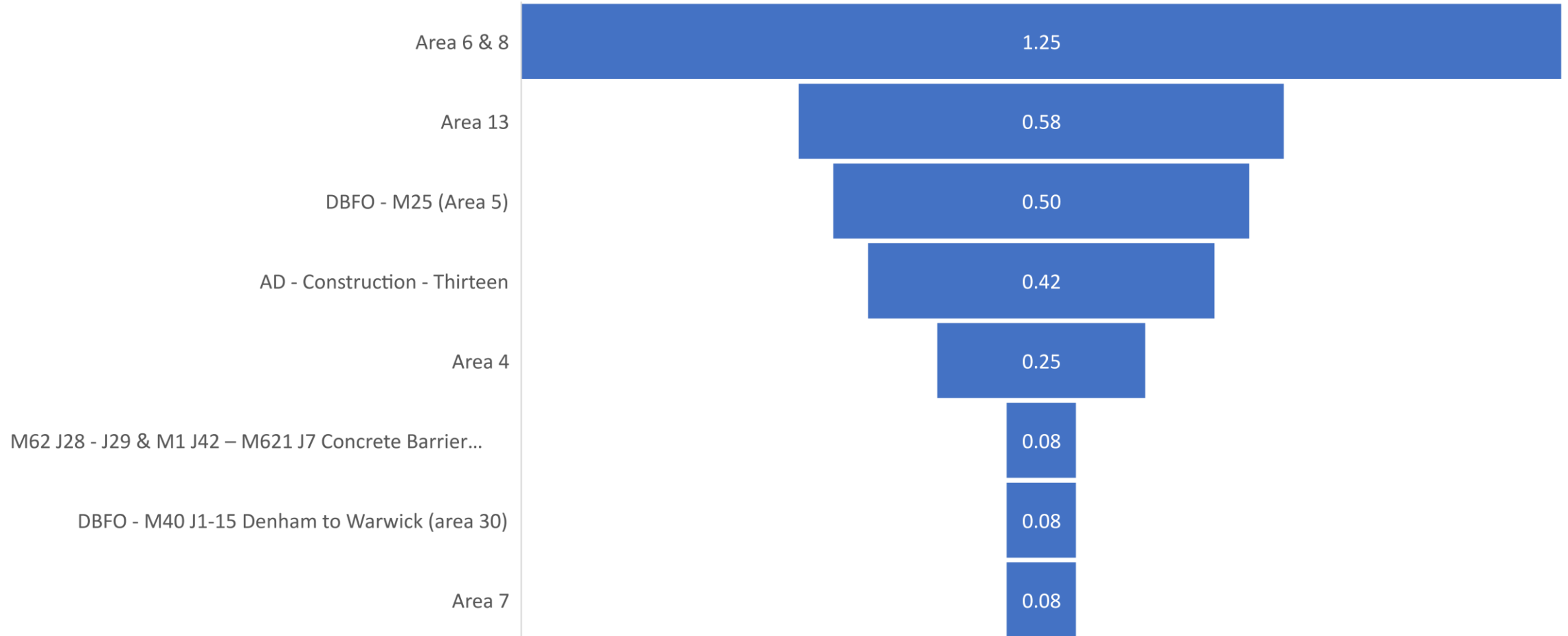


Heatmap



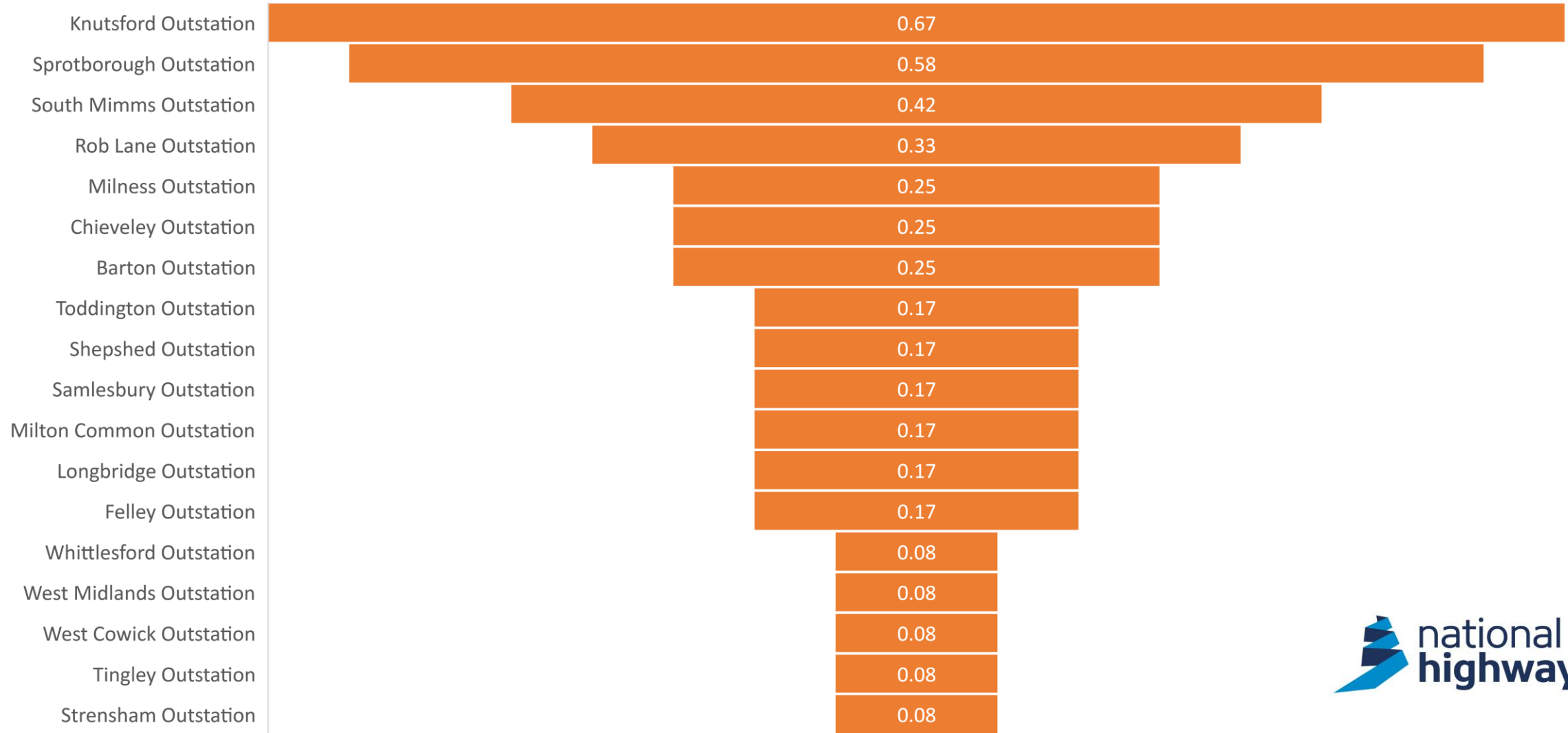
Incursions Report for Operations Directorate

12 month rolling average of the number of 'Breakdown Incursions per Month' (only)



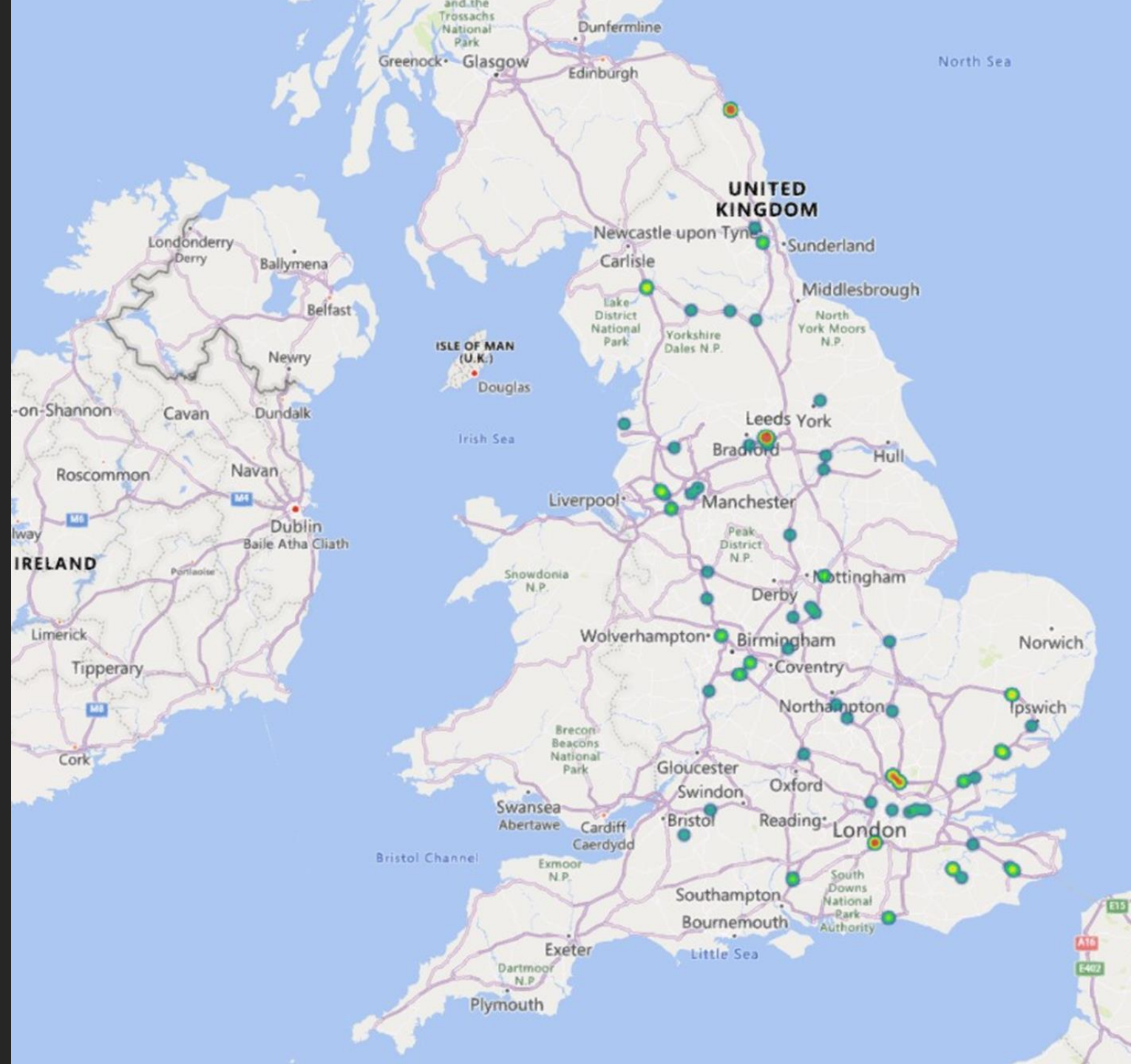
Incursions Report for Outstation (Traffic Officers)

12 month rolling average of the number of 'All Incursions types as recorded by our Traffic Officers per Month'



Heatmap of Incursions recorded in April 2023

- “100% of all incursions were recorded with coordinates”



Heatmap of all Incursions recorded (for the past 12 months)

