



# Safety Alert

## CCTV Track bracket near miss

18 March 2021

The following pages of this safety alert were issued by Highways England's supply chain partner:

## Kier Highways

# SHE ALERT

Ref: SHE H185 A 2021  
Issued by: Kier Highways SHE  
Department  
Date: 16/03/2021



## CCTV Track bracket near miss

### Incident:

During a night shift installation of a CCTV track-bracket mounted on top of a MS4 gantry, testing was being undertaken on the winch system. During the test, the winch chain failed causing the camera mount (10kg approx.) to fall 4m to the base of the CCTV mast. No injuries occurred but there was significant potential for harm to the installation team.

Track brackets and chains of this design are widely used on the UK motorway network, yet no other incidents of this type have occurred.

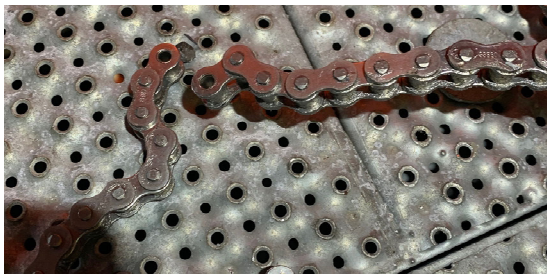


Photo: Failed chain

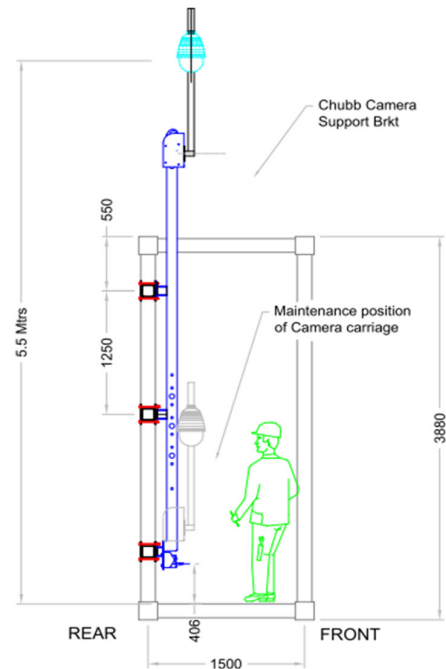


Photo: CCTV mast and track bracket

### Cause:

Human-error during the off-site assembly process by the manufacturer. Specifically, the spring-clip of one of the split links on the chain was not installed correctly.

### Mitigation to prevent re-occurrence:

All related works were stood-down pending conclusion of the investigation and agreement of mitigation measures.

Off-site assembly process and procedures revised to include additional checks and sign-offs of the split-links and spring clips.

Mechanical safety clip developed to provide a fail-safe.

The clip is installed above head height and would stop the track bracket from passing below that height.



Photo: Correctly installed spring-clip on split-link

### Key Learning:

- All existing CCTV Materials / equipment should be fully checked for compliance.
- Use the POWRA to check that all the hazards have been identified.
- Consider 'Poka-Yoke' to avoid errors / i.e. mistake-proofing/build in safety measures.