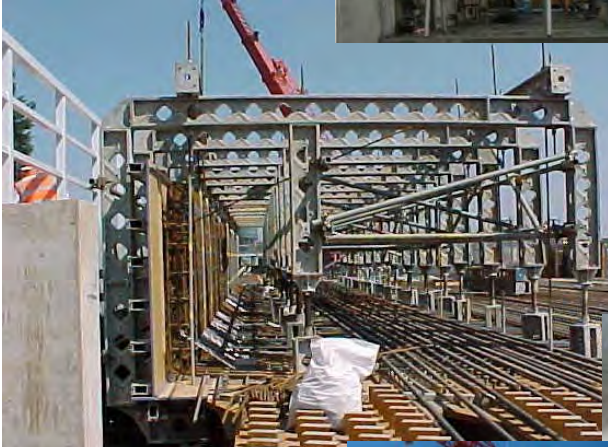


WHAT ARE TEMPORARY WORKS?



An engineered solution used to assist the construction phase which are generally removed but occasionally can become sacrificial

WHAT HAPPENS WHEN TEMPORARY WORKS FAIL?



Permanent works designers must consider the buildability of their design.

The Principal Designer needs to plan, manage, monitor, and coordinate H&S in the pre-construction phase, including: identifying, eliminating and controlling foreseeable risks (including temporary works risks) and ensuring all designers (including temporary works designers) carry out their duties.

Traditionally permanent works and temporary works designers have been separate entities to avoid overlapping liabilities.

However this system of responsibilities has led to shortcomings in coordination and a lack of interaction / communication between the two sets of designers.

Temporary works are still often viewed as a contractor's problem and not regularly integrated into the development of the permanent works design.

Permanent works designers should have an appreciation of temporary works at the early design stages and of the impact of temporary works on the permanent works, thereby make their designs easier and safer to construct.