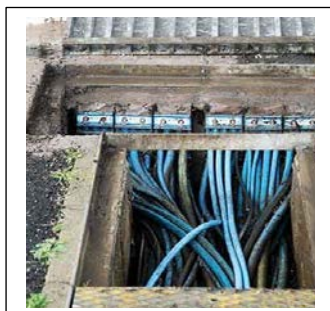


### Incident description:

Connect Plus Services have advised the Highway Electrical Association that a crew excavating in Lowestoft uncovered what appeared to be a blue water pipe in a position where an electric cable was expected to be after using a CAT and Genny. A closer visual inspection showed that this was a 600/1000 V electric cable with a Blue sheath rather than the usual black sheath.

### Investigation/findings:

The Distribution Network Operator (UKPN) advised that they would not install such a cable, but that it might be possible for others to have installed this. Blue sheathed cable of this type has been used in “intrinsically safe” or control cable applications but has not been previously found underground.



### Actions:

Ensure all relevant personnel are aware that blue sheathed electric cables may be present in excavations

Ensure all relevant personnel have been trained (e.g. HERS Training Specification 202)

Ensure all relevant personnel have been assessed on site in accordance with the Highway Electrical Registration Scheme (HERS) as applicable

Where such cable is found:

- Identify the location / take photographs
- Inform supervisory management (to inform the client in turn)
- Inform the DNO / IDNO

Information about alerts process contact  
[PTSPprogrammeOffice@highwaysengland.co.uk](mailto:PTSPprogrammeOffice@highwaysengland.co.uk)

### Further Information:

For more information about this incident please contact:  
[Elizabeth.Brathwaite@highwaysengland.co.uk](mailto:Elizabeth.Brathwaite@highwaysengland.co.uk)